

PROJECT: **OLD SEWARD 34.5kV O'MALLEY ROAD TO DIMOND BLVD**
 ENG./DESIGN: **M. ELLIOTT & V. KRIVONOSOV** W.O. # **E2320066**

| NO. | DESIGN/CONSTRUCTION/ASBUILT REVISION | DWN. BY/DATE | REVIEWED MGR./SUPV./DATE | APPROVED DIRECTOR/DATE | ENG. STAMP |
|-----|--------------------------------------|--------------|--------------------------|------------------------|------------|
| 0 | ISSUED FOR CONSTRUCTION | ME 05/02/23 | 5/2/23 | | |

| NO. | RECORD REVISION | CAD DRAWN BY | W.P.# | W.O. NUMBER | RECORD APPROVED | DATE |
|-----|-----------------|--------------|-------|-------------|-----------------|----------|
| 1 | X | CC | - | - | XXX | 11/11/19 |



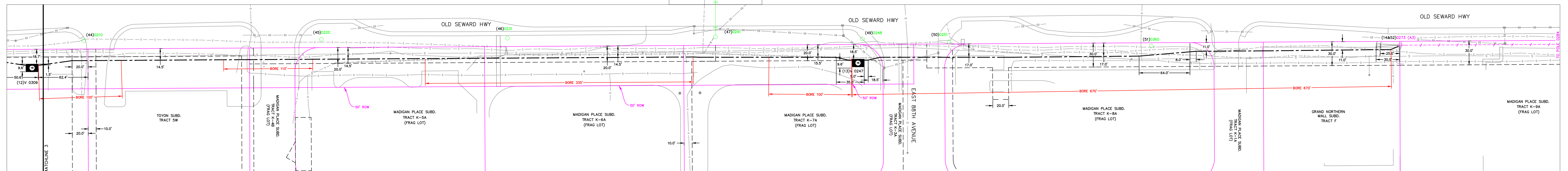
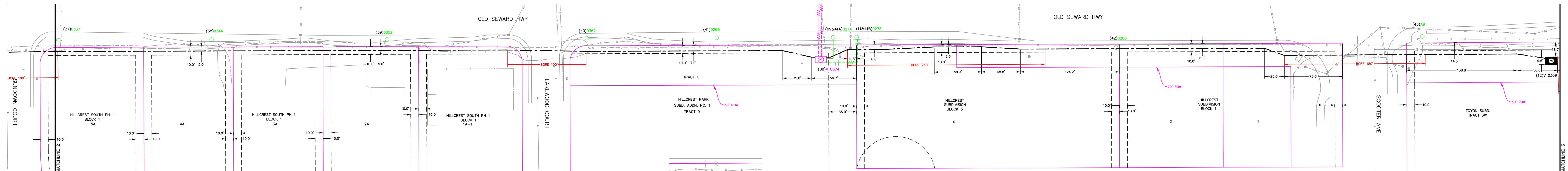
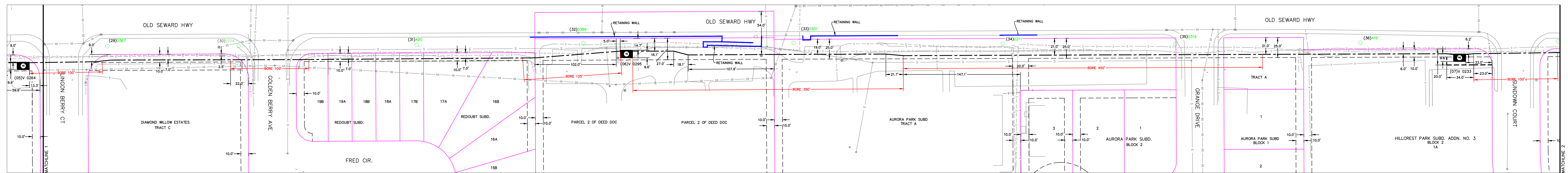
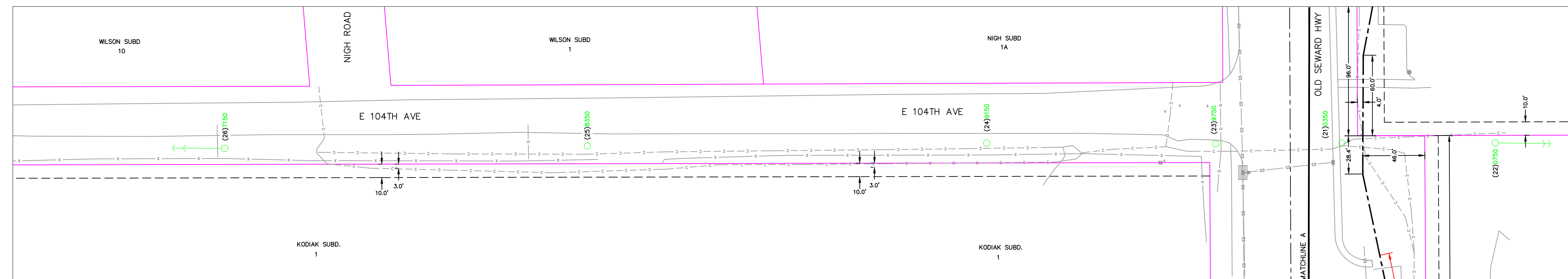
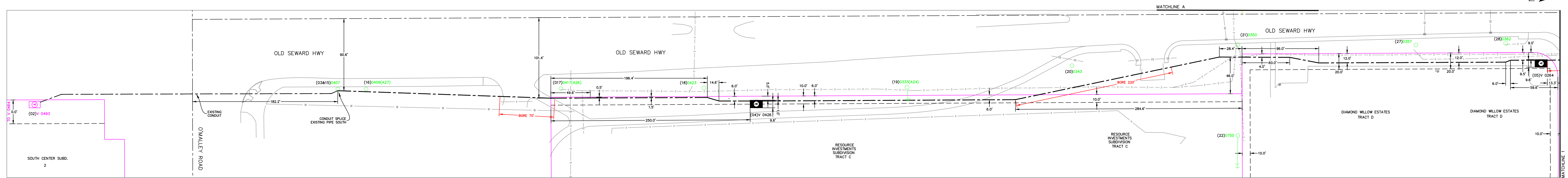
Chugach Electric Association, Inc.
 5601 Electron Drive - P.O. Box 196300
 Anchorage, Alaska 99519-6300

DRAWING NAME: **34.5KV SUBTRANSMISSION LINE KLATT - 94TH JCT PLAN & PROFILE OLD SEWARD 34.5KV O'MALLEY ROAD TO DIMOND BLVD**

CONFIDENTIAL

DRAWING NO. - PREVIOUS/REFERENCE: **NEW**
 DRAWING NO.: **KLSJ-PP-0015**

SHEET **0001** OF **0001**
 PAGE **0001** OF **0001**



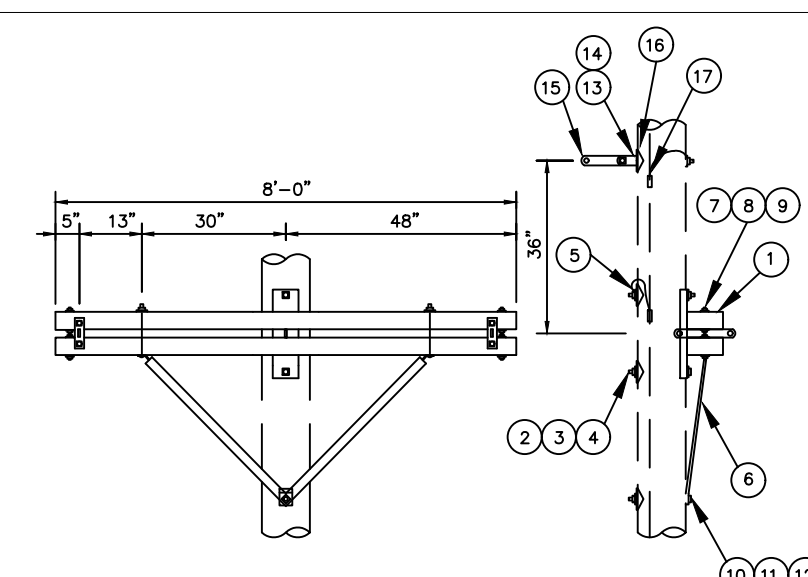
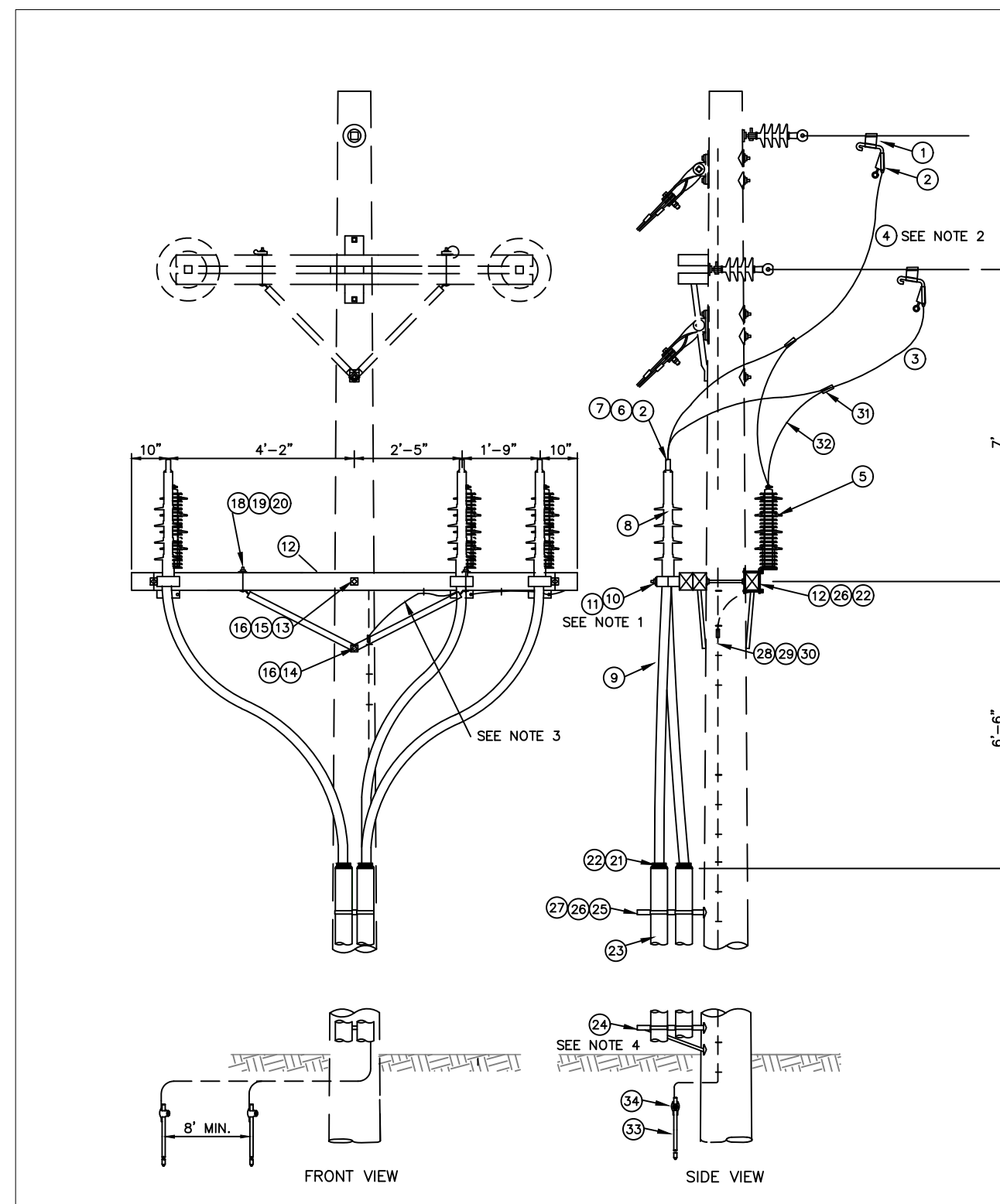
| | | | | |
|---|-------------------------|--------------------------------------|--|--------------------------|
| PROJECT: OLD SEWARD 34.5KV O'MALLEY ROAD TO DIMOND BLVD | | | | |
| ENG./DESIGN: M. ELLIOTT & V. KRIVONOSOV | | | | |
| NO. | | DESIGN/CONSTRUCTION/ASBUILT REVISION | | DATE |
| 0 | ISSUED FOR CONSTRUCTION | | | ME 05/02/23 |
| NO. | | DWN. BY/DATE | | REVIEWED MGR./SUPV./DATE |
| NO. | | APPROVED DIRECTOR/DATE | | ENG. STAMP |

| NO. | RECORD REVISION | CAD DRAWN BY | W.P.# | W.O. NUMBER | RECORD APPROVED | DATE |
|-----|-----------------|--------------|-------|-------------|-----------------|----------|
| 1 | X | CC | - | - | XXX | 11/11/19 |

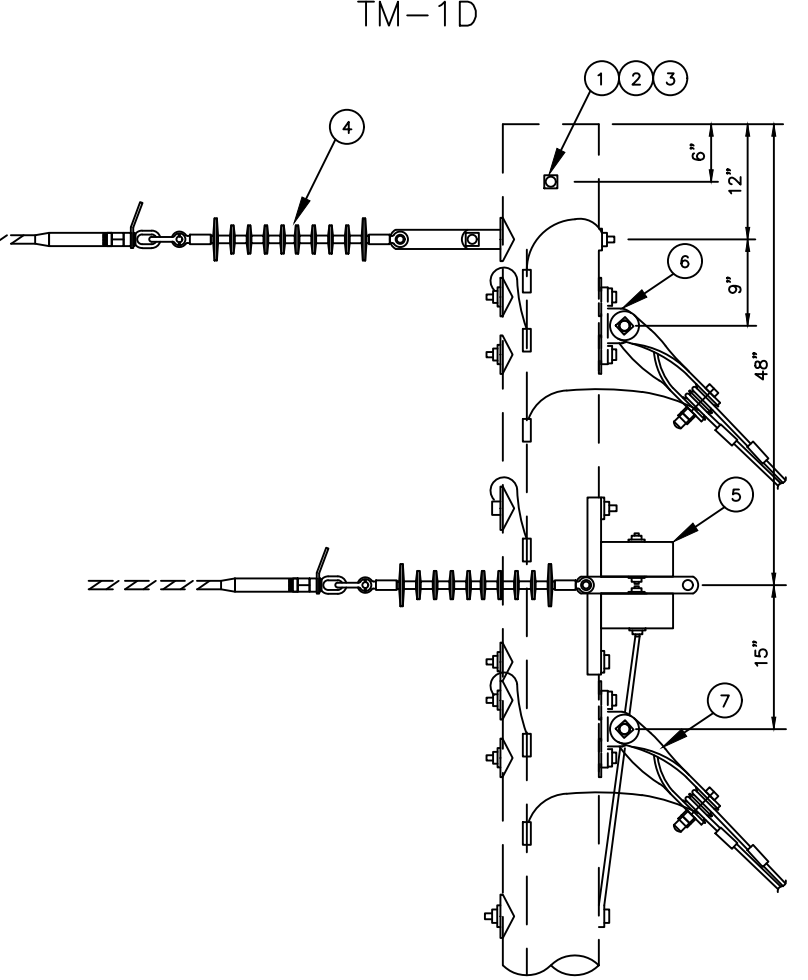


Chugach Electric Association, Inc.
5601 Electron Drive - P.O. Box 196300
Anchorage, Alaska 99519-6300

| | | | |
|----------------------------------|--|--|--|
| DRAWING NAME: | | 34.5KV SUBTRANSMISSION LINE KLATT - 94TH JCT RIGHT-OF-WAY OLD SEWARD 34.5KV O'MALLEY ROAD TO DIMOND BLVD | |
| DRAWING NO. - PREVIOUS/REFERENCE | | NEW | |
| DRAWING NO.: | | KLSJ-RW-0006 | |
| SHEET 0001 OF 0001 | | PAGE _____ OF _____ | |

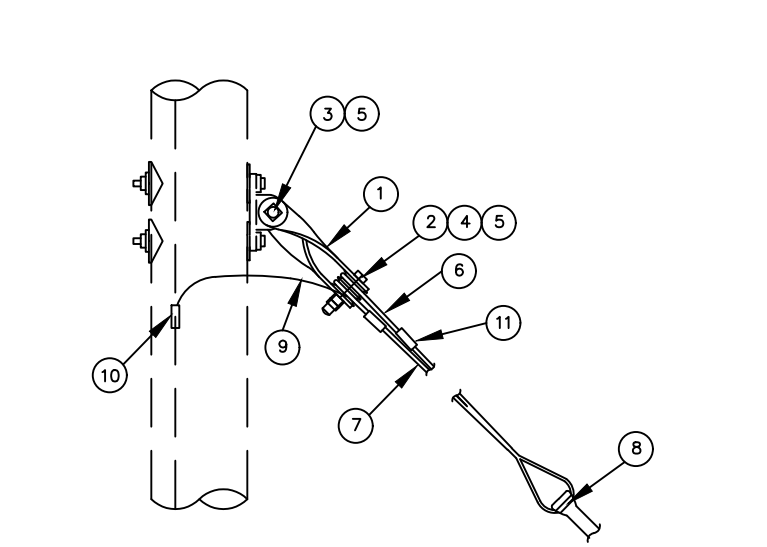


| DRG REF | QTY | DESCRIPTION | CODE DET. NO. |
|---------|-----|---|---------------|
| 1 | 1 | Crossarm Deadend Assembly, Hughes Bros. #2992-4 | |
| 2 | 2 | 7/8" Bolt, Machine, 4 required length, Hughes Bros. #1618 | |
| 3 | 1 | Washer, Curved, 4" Square x 1/4", 15/16" Hole, Hughes Bros. #CW80, or approved equal | |
| 4 | 2 | 7/8" Locknut, MF Type | |
| 5 | 2 | 7/8" Clamp, Ground wire + 1 Nut, Hughes Bros. #2272-B, or approved equal | |
| 6 | 1 | Tip, Brace, Crossarm, 40" Spool, Hughes Bros. #2024-10-11, or approved equal | |
| 7 | 2 | 1/2" Bolt, Machine, 4 required length, Hughes Bros. #1618 | |
| 8 | 2 | Washer, Round, 1 1/2" Dia., 3/16" Hole | |
| 9 | 2 | 1/2" Locknut, MF Type | |
| 10 | 2 | 7/8" Bolt, Machine, 4 required length, Hughes Bros. #1618 | |
| 11 | 1 | Washer, Curved, 4" Square x 1/4", 15/16" Hole, Hughes Bros. #CW80, or approved equal | |
| 12 | 1 | 7/8" Bolt, 4" Long with Hole Drilled For Cotter Key, Hughes Bros. #40-4 with Cotter Pin | |
| 13 | 1 | Wire, #8 Bare Solid Copper, length as required | |
| 14 | 2 | Connector, Compression, Bundry #C262C, or approved equal | |

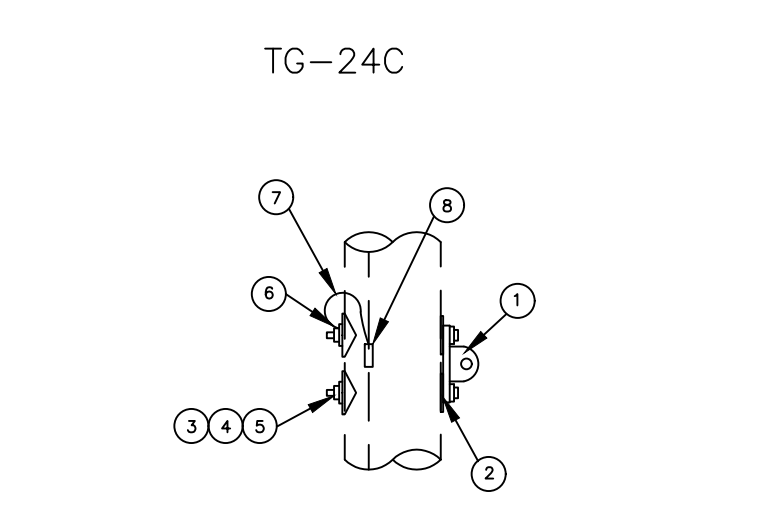


| DRG REF | QTY | DESCRIPTION | CODE DET. NO. |
|---------|-----|---|---------------|
| 1 | 1 | Tip, Attachment, Links, Twisted, Ref. 3/8" x 3/8" Hole Centers, 1-1/16" Holes, Hughes Bros. #1519 | |
| 2 | 2 | Guy Roller, 3-1/4" dia. with 1-1/16" dia. hole, Hughes Bros. #2083, or approved equal | |
| 3 | 1 | 1" Bolt, Machine x 3-1/2" with 3-1/2" Threaded, Hughes Bros. #B103-1/2-2-1/2, or approved equal | |
| 4 | 1 | 1" Bolt, Machine x 3" with 3" Threaded, Hughes Bros. #B103-3, or approved equal | |
| 5 | 2 | 1" Locknut, MF Type | |
| 6 | 2 | Deadend Guy, Formed, Formed Wire Products #MWC-4126 | |
| 7 | 2 | Guy Wire, 208, length as required | |
| 8 | 2 | Clamp, Anchor, Bounding, 1/4" Eye, 1" Rod | |
| 9 | 1 | Wire, #8 Bare Solid Copper, length as required | |
| 10 | 1 | Connector, Compression, Bundry #C262C, or approved equal | |
| 11 | 2 | Connector, Compression, Blackburn #R289, or approved equal | |

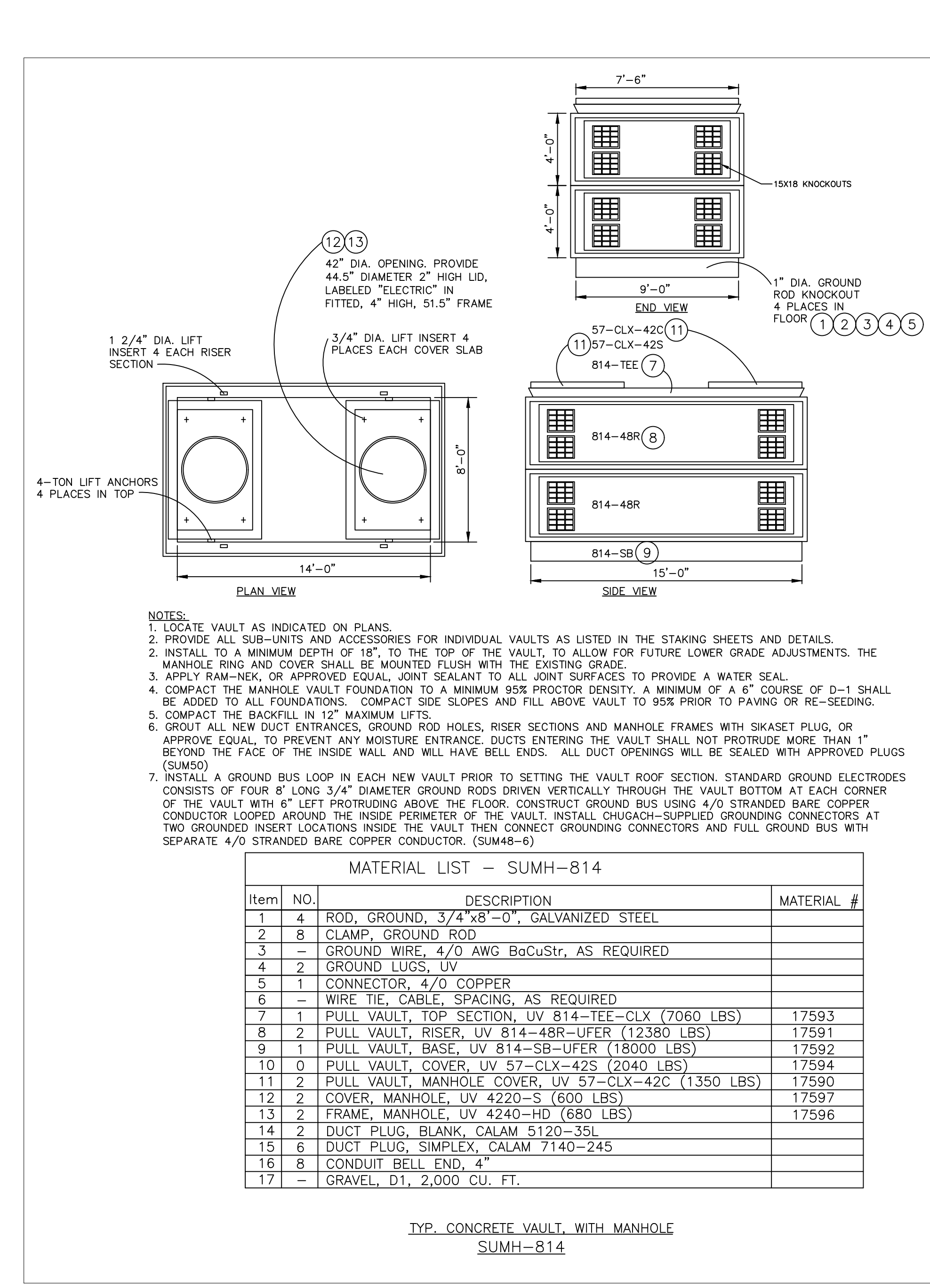
| DRG REF | QTY | DESCRIPTION | CODE DET. NO. |
|---------|-----|---|---------------|
| 1 | 1 | Clamp, Compression, Deadend, 26/8 ACSR and Steel Eye | |
| 2 | 1 | Anchor, Body, 5/8", 10,000 lbs., with bolt pin, nut, and cotter. CEA #1607 | |
| 3 | 1 | Insulator, Suspension, Composite, 35kV, 18,000 lbs., Salsbury #9033U-51 CEA #3317 | |



| DRG REF | QTY | DESCRIPTION | CODE DET. NO. |
|---------|-----|---|---------------|
| 1 | 1 | Tip, Attachment, Links, Twisted, Ref. 3/8" x 3/8" Hole Centers, 1-1/16" Holes, Hughes Bros. #1519 | |
| 2 | 2 | Guy Roller, 3-1/4" dia. with 1-1/16" dia. hole, Hughes Bros. #2083, or approved equal | |
| 3 | 1 | 1" Bolt, Machine x 3-1/2" with 3-1/2" Threaded, Hughes Bros. #B103-1/2-2-1/2, or approved equal | |
| 4 | 1 | 1" Bolt, Machine x 3" with 3" Threaded, Hughes Bros. #B103-3, or approved equal | |
| 5 | 2 | 1" Locknut, MF Type | |
| 6 | 2 | Deadend Guy, Formed, Formed Wire Products #MWC-4126 | |
| 7 | 2 | Guy Wire, 208, length as required | |
| 8 | 2 | Clamp, Anchor, Bounding, 1/4" Eye, 1" Rod | |
| 9 | 1 | Wire, #8 Bare Solid Copper, length as required | |
| 10 | 1 | Connector, Compression, Bundry #C262C, or approved equal | |
| 11 | 2 | Connector, Compression, Blackburn #R289, or approved equal | |

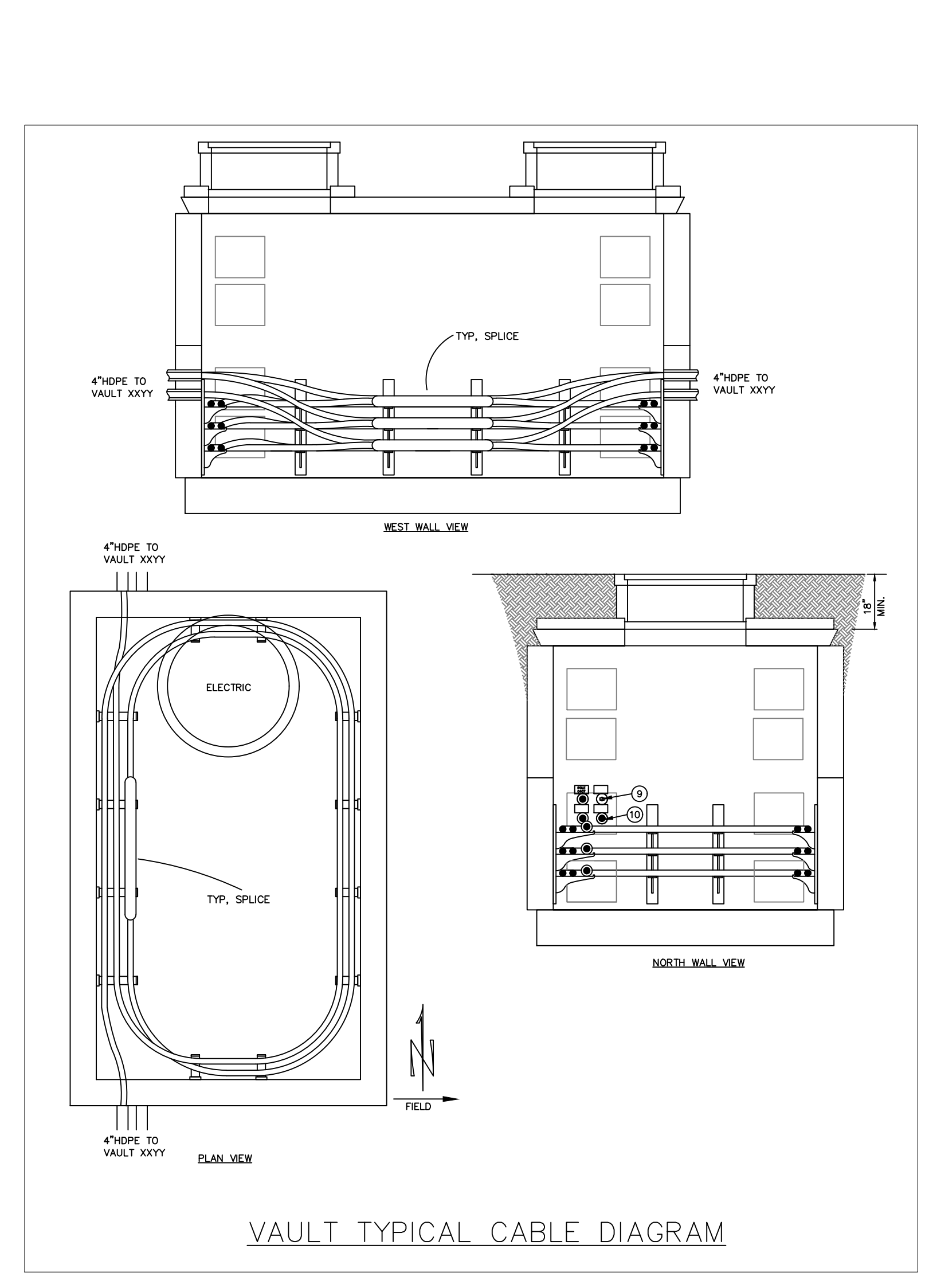


| DRG REF | QTY | DESCRIPTION | CODE DET. NO. |
|---------|-----|---|---------------|
| 1 | 1 | Tip, Attachment, Links, Twisted, Ref. 3/8" x 3/8" Hole Centers, 1-1/16" Holes, Hughes Bros. #1519 | |
| 2 | 2 | Guy Roller, 3-1/4" dia. with 1-1/16" dia. hole, Hughes Bros. #2083, or approved equal | |
| 3 | 1 | 1" Bolt, Machine x 3-1/2" with 3-1/2" Threaded, Hughes Bros. #B103-1/2-2-1/2, or approved equal | |
| 4 | 1 | 1" Bolt, Machine x 3" with 3" Threaded, Hughes Bros. #B103-3, or approved equal | |
| 5 | 2 | 1" Locknut, MF Type | |
| 6 | 2 | Deadend Guy, Formed, Formed Wire Products #MWC-4126 | |
| 7 | 2 | Guy Wire, 208, length as required | |
| 8 | 2 | Clamp, Anchor, Bounding, 1/4" Eye, 1" Rod | |
| 9 | 1 | Wire, #8 Bare Solid Copper, length as required | |
| 10 | 1 | Connector, Compression, Bundry #C262C, or approved equal | |
| 11 | 2 | Connector, Compression, Blackburn #R289, or approved equal | |

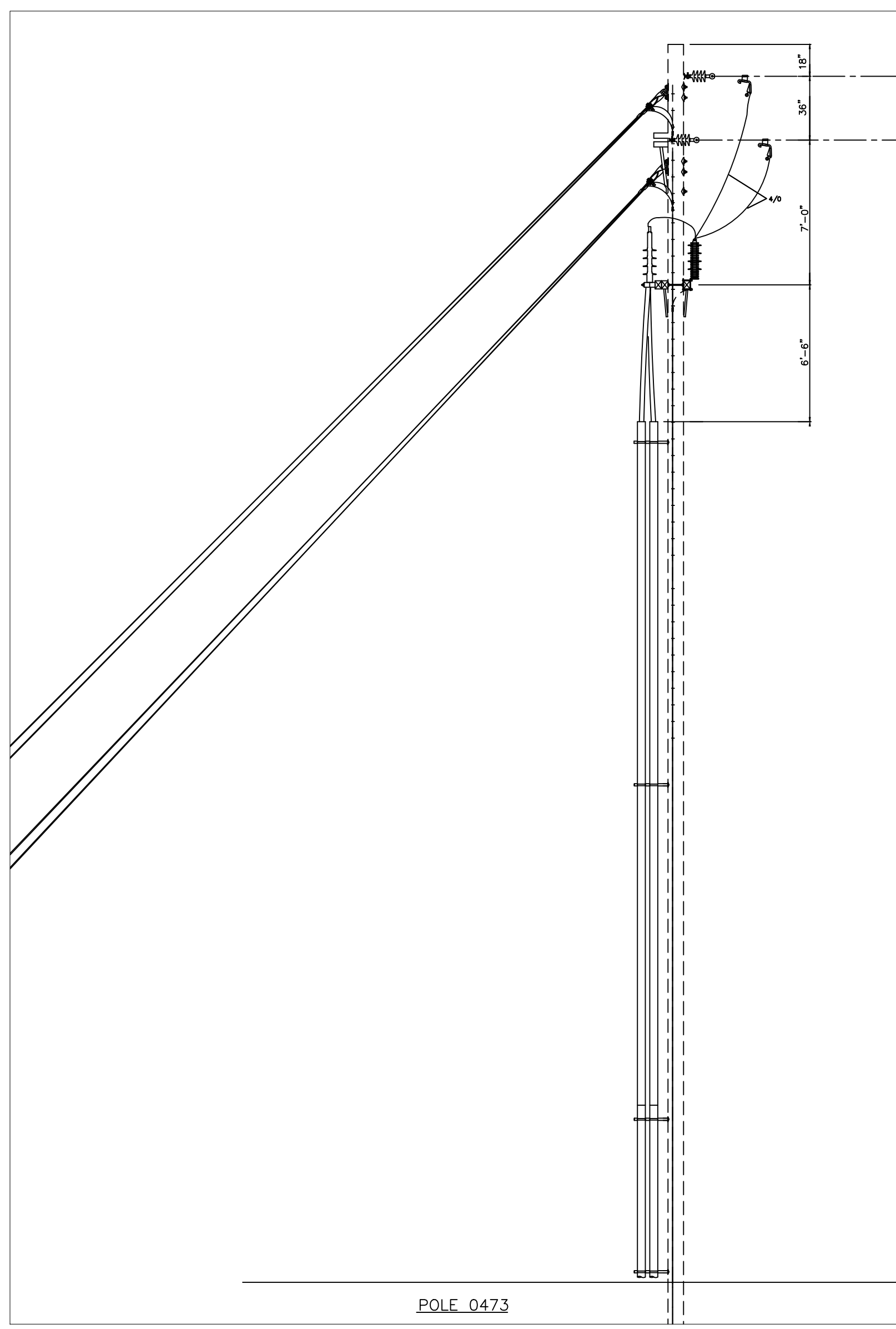


- NOTES:
1. LOCATE VAULT AS INDICATED ON PLANS.
 2. PROVIDE ALL SUB-UNITS AND ACCESSORIES FOR INDIVIDUAL VAULTS AS LISTED IN THE STAKING SHEETS AND DETAILS.
 3. INSTALL TO A MINIMUM DEPTH OF 18", TO THE TOP OF THE VAULT, TO ALLOW FOR FUTURE LOWER GRADE ADJUSTMENTS. THE MANHOLE RING AND COVER SHALL BE MOUNTED FLUSH WITH THE EXISTING GRADE.
 4. APPLY RAM-NEK, OR APPROVED EQUAL, JOINT SEALANT TO ALL JOINT SURFACES TO PROVIDE A WATER SEAL.
 5. COMPACT THE MANHOLE VAULT FOUNDATION TO A MINIMUM 95% PROCTOR DENSITY. A MINIMUM OF A 6" COURSE OF D-1 SHALL BE ADDED TO ALL FOUNDATIONS. COMPACT SIDE SLOPES AND FILL ABOVE VAULT TO 95% PRIOR TO PAVING OR RE-SEEDING.
 6. GROUT ALL NEW DUCT ENTRANCES, GROUND ROD HOLES, RISER SECTIONS AND MANHOLE FRAMES WITH SIKASSET PLUG, OR APPROVE EQUAL, TO PREVENT ANY MOISTURE ENTRANCE. DUCTS ENTERING THE VAULT SHALL NOT PROTRUDE MORE THAN 1" BEYOND THE FACE OF THE INSIDE WALL AND WILL HAVE BELL ENDS. ALL DUCT OPENINGS WILL BE SEALED WITH APPROVED PLUGS (SUM50).
 7. INSTALL A GROUND BUS LOOP IN EACH NEW VAULT PRIOR TO SETTING THE VAULT ROOF SECTION. STANDARD GROUND ELECTRODES CONSISTS OF FOUR 8' LONG 3/4" DIAMETER GROUND RODS DRIVEN VERTICALLY THROUGH THE VAULT BOTTOM AT EACH CORNER OF THE VAULT WITH 6" LEFT PROTRUDING ABOVE THE FLOOR. CONSTRUCT GROUND BUS USING 4/0 STRANDED BARE COPPER CONDUCTOR LOOPED AROUND THE INSIDE PERIMETER OF THE VAULT. INSTALL CHUGACH-SUPPLIED GROUNDING CONNECTORS AT TWO GROUNDED INSERT LOCATIONS INSIDE THE VAULT THEN CONNECT GROUNDING CONNECTORS AND FULL GROUND BUS WITH SEPARATE 4/0 STRANDED BARE COPPER CONDUCTOR. (SUM48-6)

| Item NO. | DESCRIPTION | MATERIAL # |
|----------|---|------------|
| 1 | 4 ROD, GROUND, 3/4"x8'-0", GALVANIZED STEEL | |
| 2 | 8 CLAMP, GROUND ROD | |
| 3 | 4 GROUND WIRE, 4/0 AWG BcCuStr, AS REQUIRED | |
| 4 | 2 GROUND LUGS, UV | |
| 5 | 1 CONNECTOR, 4/0 COPPER | |
| 6 | - WIRE TIE, CABLE, SPACING, AS REQUIRED | |
| 7 | 1 PULL VAULT, TOP SECTION, UV 814-TEE-CLX (7060 LBS) | 17593 |
| 8 | 2 PULL VAULT, RISER, UV 814-48R-UFR (12380 LBS) | 17581 |
| 9 | 1 PULL VAULT, BASE, UV 814-SB-UFR (18000 LBS) | 17592 |
| 10 | 0 PULL VAULT, COVER, UV 57-CLX-42S (2040 LBS) | 17594 |
| 11 | 2 PULL VAULT, MANHOLE COVER, UV 57-CLX-42C (1350 LBS) | 17590 |
| 12 | 2 COVER, MANHOLE, UV 4220-S (600 LBS) | 17597 |
| 13 | 2 FRAME, MANHOLE, UV 4240-HD (680 LBS) | 17596 |
| 14 | 2 DUCT PLUG, BLANK, CALAM 5120-35L | |
| 15 | 6 DUCT PLUG, SIMPLEX, CALAM 7140-24S | |
| 16 | 8 CONDUIT BELL END, 4" | |
| 17 | - GRAVEL, D1, 2,000 CU. FT. | |



VAULT TYPICAL CABLE DIAGRAM

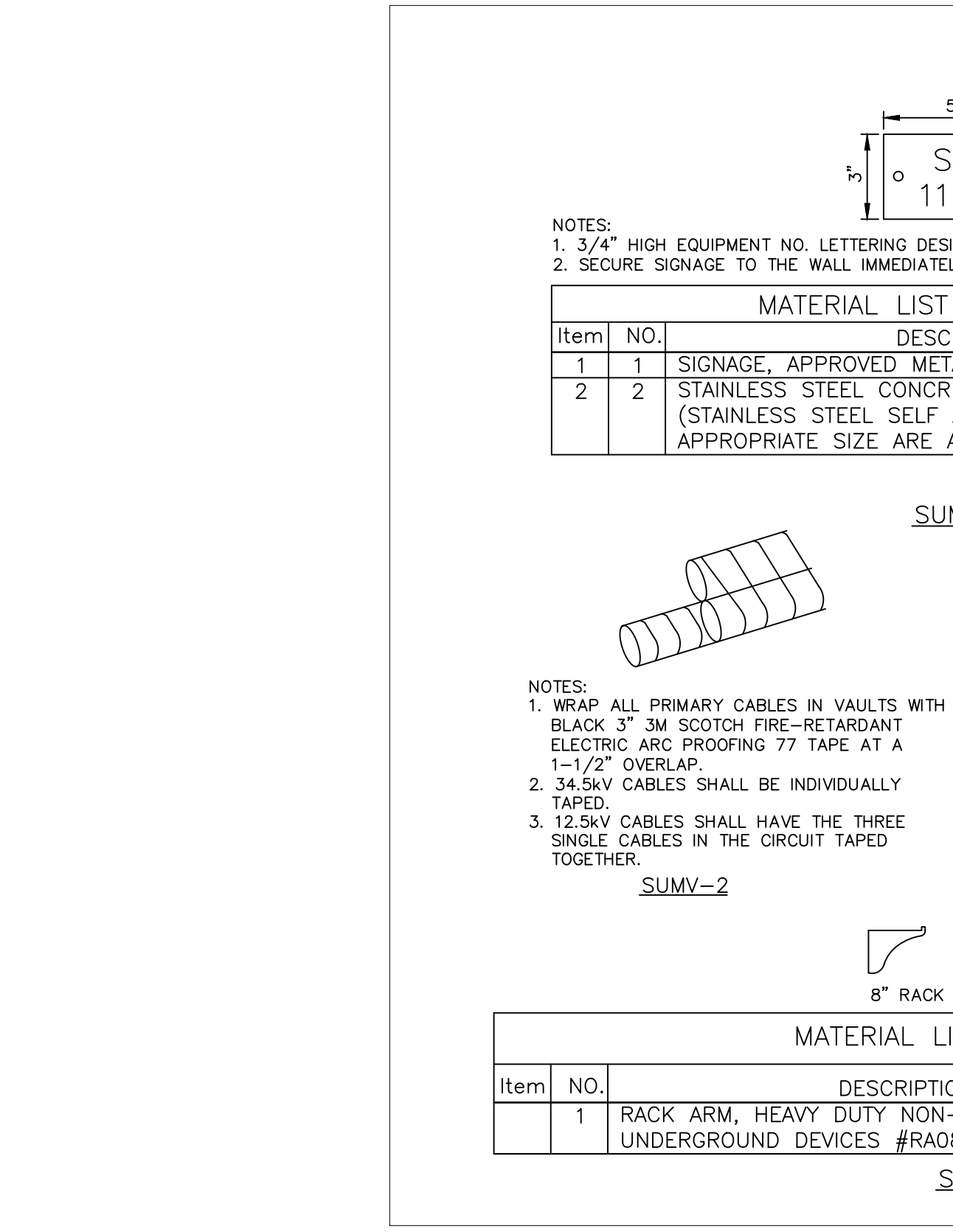


POLE 0473

- NOTES:
1. SECURE THE BASES OF THE CABLE CLEATS TO THE DOUBLE CROSSINGS WITH 1/4" STAINLESS STEEL THREADED ROD.
 2. COVER CENTER PRIMARY JUMPER FROM STUDS DISCONNECT DOWN TO, AND OVER PADBLE AT TERMINATION AND FROM ARRESTOR LEAD TAP TO AND OVER ITS TERMINAL.
 3. GROUND ARRESTORS AND TERMINATIONS BLEED Wires TO POLE GROUND.
 4. MAINTAIN A MINIMUM OF 8'-0" SEPARATION BETWEEN BOTTOMMOST STAND-OFF BRACKETS.

| Item No. | DESCRIPTION | MATERIAL # |
|----------|--|------------|
| 1 | 1/4" DISCONNECT, JUMPER STUD, APPROP WEDGE CONNECTOR | CEA #1007 |
| 2 | 8 PADDLE, SCOTCH PADBLE, 3/8" DIA. #1007-1 | CEA #1007 |
| 3 | 1/4" TAP, HIGH VOLTAGE RUBBER INSULATION HOUSING #1007-100 | CEA #1007 |
| 4 | 1/4" TAP, HIGH VOLTAGE RUBBER INSULATION HOUSING #1007-100 | CEA #1007 |
| 5 | 1/4" TAP, HIGH VOLTAGE RUBBER INSULATION HOUSING #1007-100 | CEA #1007 |
| 6 | 1/4" TAP, HIGH VOLTAGE RUBBER INSULATION HOUSING #1007-100 | CEA #1007 |
| 7 | 1/4" TAP, HIGH VOLTAGE RUBBER INSULATION HOUSING #1007-100 | CEA #1007 |
| 8 | 1/4" TAP, HIGH VOLTAGE RUBBER INSULATION HOUSING #1007-100 | CEA #1007 |
| 9 | 1/4" TAP, HIGH VOLTAGE RUBBER INSULATION HOUSING #1007-100 | CEA #1007 |
| 10 | 1/4" TAP, HIGH VOLTAGE RUBBER INSULATION HOUSING #1007-100 | CEA #1007 |
| 11 | 1/4" TAP, HIGH VOLTAGE RUBBER INSULATION HOUSING #1007-100 | CEA #1007 |
| 12 | 1/4" TAP, HIGH VOLTAGE RUBBER INSULATION HOUSING #1007-100 | CEA #1007 |
| 13 | 1/4" TAP, HIGH VOLTAGE RUBBER INSULATION HOUSING #1007-100 | CEA #1007 |
| 14 | 1/4" TAP, HIGH VOLTAGE RUBBER INSULATION HOUSING #1007-100 | CEA #1007 |
| 15 | 1/4" TAP, HIGH VOLTAGE RUBBER INSULATION HOUSING #1007-100 | CEA #1007 |
| 16 | 1/4" TAP, HIGH VOLTAGE RUBBER INSULATION HOUSING #1007-100 | CEA #1007 |
| 17 | 1/4" TAP, HIGH VOLTAGE RUBBER INSULATION HOUSING #1007-100 | CEA #1007 |
| 18 | 1/4" TAP, HIGH VOLTAGE RUBBER INSULATION HOUSING #1007-100 | CEA #1007 |
| 19 | 1/4" TAP, HIGH VOLTAGE RUBBER INSULATION HOUSING #1007-100 | CEA #1007 |
| 20 | 1/4" TAP, HIGH VOLTAGE RUBBER INSULATION HOUSING #1007-100 | CEA #1007 |
| 21 | 1/4" TAP, HIGH VOLTAGE RUBBER INSULATION HOUSING #1007-100 | CEA #1007 |
| 22 | 1/4" TAP, HIGH VOLTAGE RUBBER INSULATION HOUSING #1007-100 | CEA #1007 |
| 23 | 1/4" TAP, HIGH VOLTAGE RUBBER INSULATION HOUSING #1007-100 | CEA #1007 |
| 24 | 1/4" TAP, HIGH VOLTAGE RUBBER INSULATION HOUSING #1007-100 | CEA #1007 |
| 25 | 1/4" TAP, HIGH VOLTAGE RUBBER INSULATION HOUSING #1007-100 | CEA #1007 |
| 26 | 1/4" TAP, HIGH VOLTAGE RUBBER INSULATION HOUSING #1007-100 | CEA #1007 |
| 27 | 1/4" TAP, HIGH VOLTAGE RUBBER INSULATION HOUSING #1007-100 | CEA #1007 |
| 28 | 1/4" TAP, HIGH VOLTAGE RUBBER INSULATION HOUSING #1007-100 | CEA #1007 |
| 29 | 1/4" TAP, HIGH VOLTAGE RUBBER INSULATION HOUSING #1007-100 | CEA #1007 |
| 30 | 1/4" TAP, HIGH VOLTAGE RUBBER INSULATION HOUSING #1007-100 | CEA #1007 |
| 31 | 1/4" TAP, HIGH VOLTAGE RUBBER INSULATION HOUSING #1007-100 | CEA #1007 |
| 32 | 1/4" TAP, HIGH VOLTAGE RUBBER INSULATION HOUSING #1007-100 | CEA #1007 |
| 33 | 1/4" TAP, HIGH VOLTAGE RUBBER INSULATION HOUSING #1007-100 | CEA #1007 |
| 34 | 1/4" TAP, HIGH VOLTAGE RUBBER INSULATION HOUSING #1007-100 | CEA #1007 |

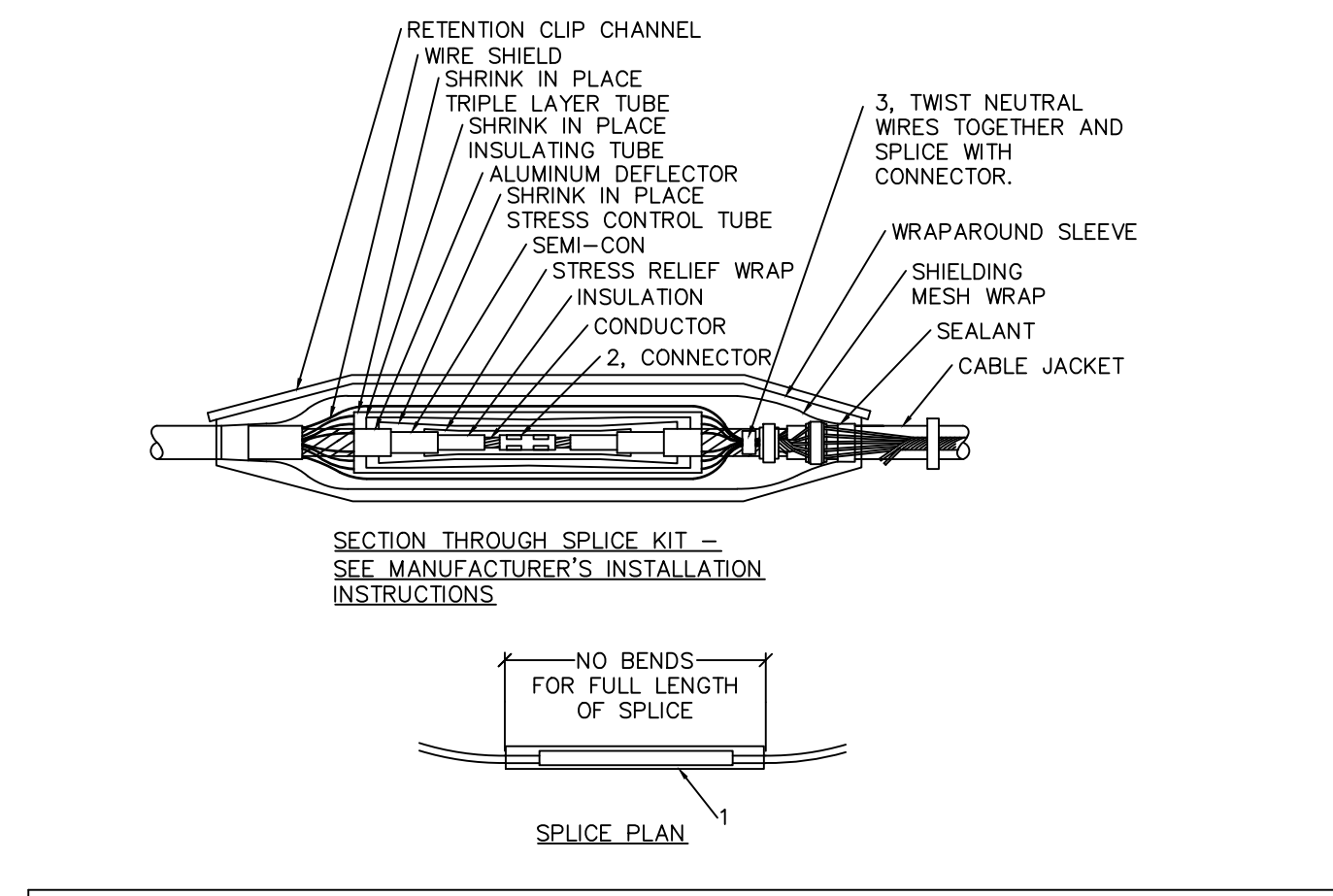
TUC7



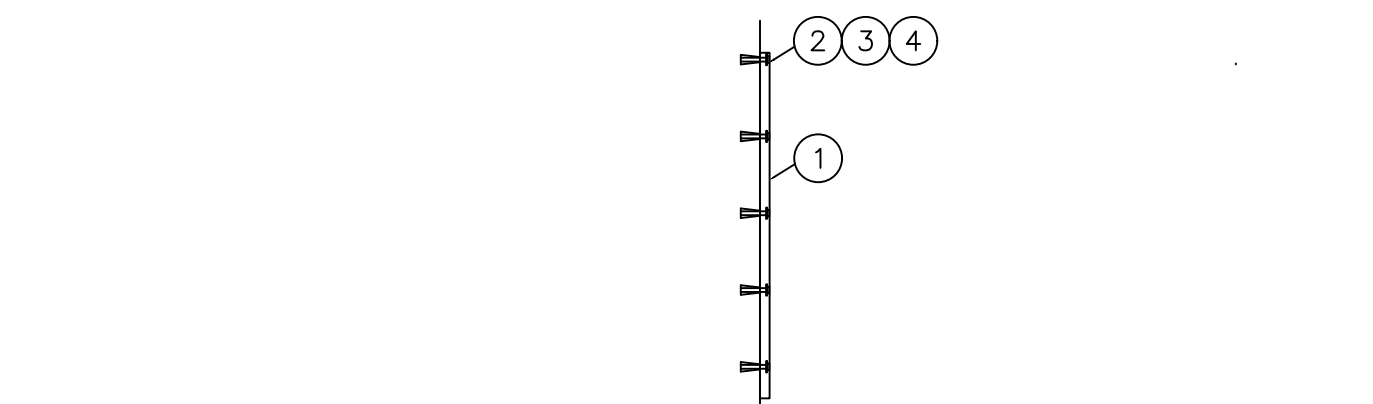
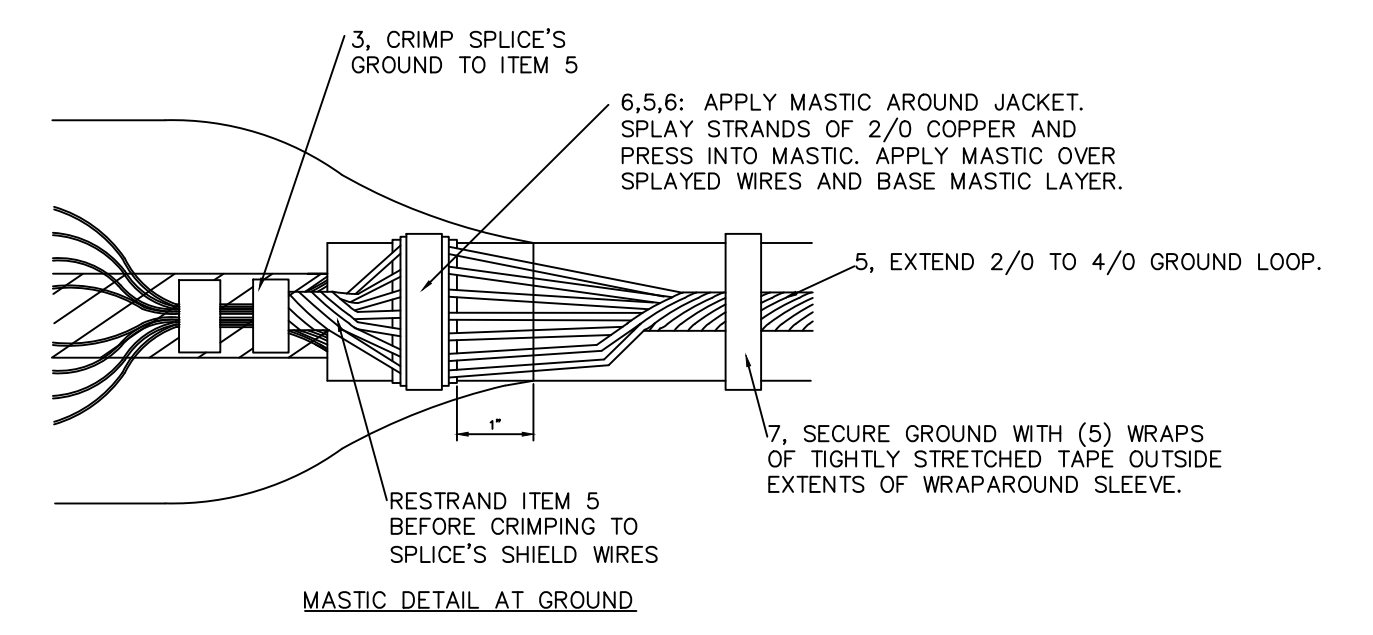
| Item NO. | DESCRIPTION | MATERIAL # |
|----------|--|------------|
| 1 | 1 SIGNAGE, APPROVED METAL, OR ENGRAVED LAMINATED PLASTIC | |
| 2 | 2 STAINLESS STEEL SELF ANCHORING CONCRETE SCREWS OF APPROPRIATE SIZE ARE AN ACCEPTABLE ALTERNATIVE | |

| Item NO. | DESCRIPTION | MATERIAL # |
|----------|--|------------|
| 1 | 1 RACK ARM, HEAVY DUTY NON-METALLIC, UNDERGROUND DEVICES #RA0B (8") OR #RA14 (14") | |

| Item NO. | DESCRIPTION | MATERIAL # |
|----------|--|------------|
| 1 | 1 RACK ARM, HEAVY DUTY NON-METALLIC, UNDERGROUND DEVICES #RA0B (8") OR #RA14 (14") | |



| NO. QTY. | DESCRIPTION | MATERIAL # |
|----------|---|------------|
| 1 | 3 SPICE KIT, PRIMARY, UNDERGROUND, TE RAYCHEM #HVS-3523S-J, 35kV CLASS | 4519 |
| 2 | 3 CONNECTOR, COMPRESSION, COPPER, 3M SCOTCHLOK, #AL9CU, 20024 | 19031 |
| 3 | 6 CONNECTOR, COMPRESSION, COPPER, BUNDY #YC26C26, 2/0-2/0 | |
| 4 | 3 CONNECTOR, COMPRESSION, COPPER, BUNDY #YC26C26, 2/0-4/0 | |
| 5 | 3 GROUND CONDUCTOR, 2/0 BARE COPPER 7-STRAND, LENGTH AS REQUIRED | |
| 6 | 3 MASTIC TAPE, 3M #2228, OR APPROVED EQUAL | |
| 7 | - TAPE, ELECTRICAL, LENGTH REQUIRED, WHERE NOTED, 3M #SUPER 88, OR APPROVED EQUAL | |



| Item NO. | DESCRIPTION | MATERIAL # |
|----------|--|------------|
| 1 | 1 STANCHION, HEAVY DUTY NON-METALLIC, 16" OR 36" UNDERGROUND DEVICES #CR36-B | |
| 2 | 5 SCREW, 1/2"-13x1-3/8" LONG HEX HEAD CAP, 316 STAINLESS | |
| 3 | 5 ANCHOR, 1/2"-13x2" LONG DROP-IN, 303 STAINLESS STEEL | |
| 4 | 5 WASHER, 1-1/4" O.D., 9/16" HOLE, 316 STAINLESS STEEL | |

SUMV-1

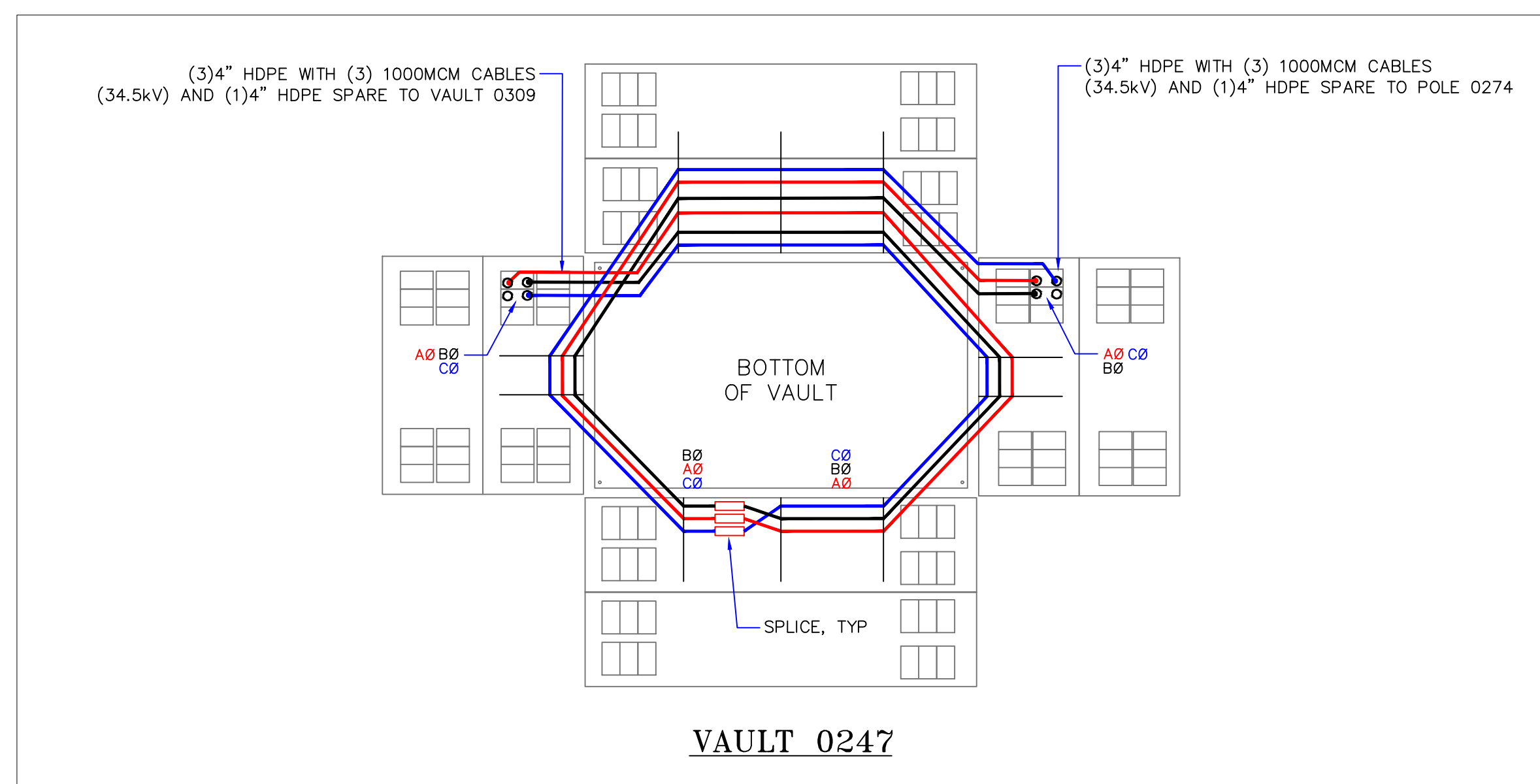
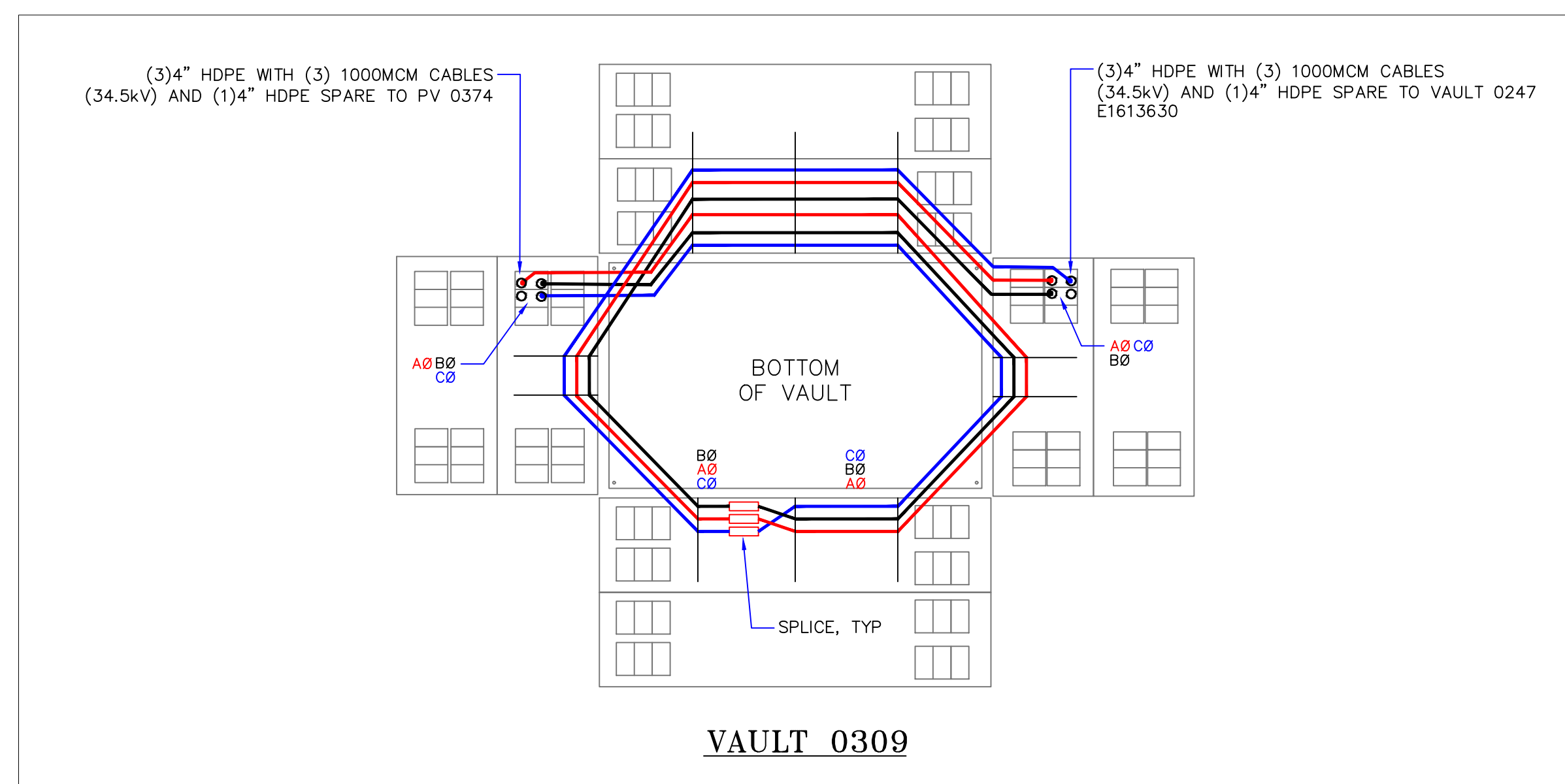
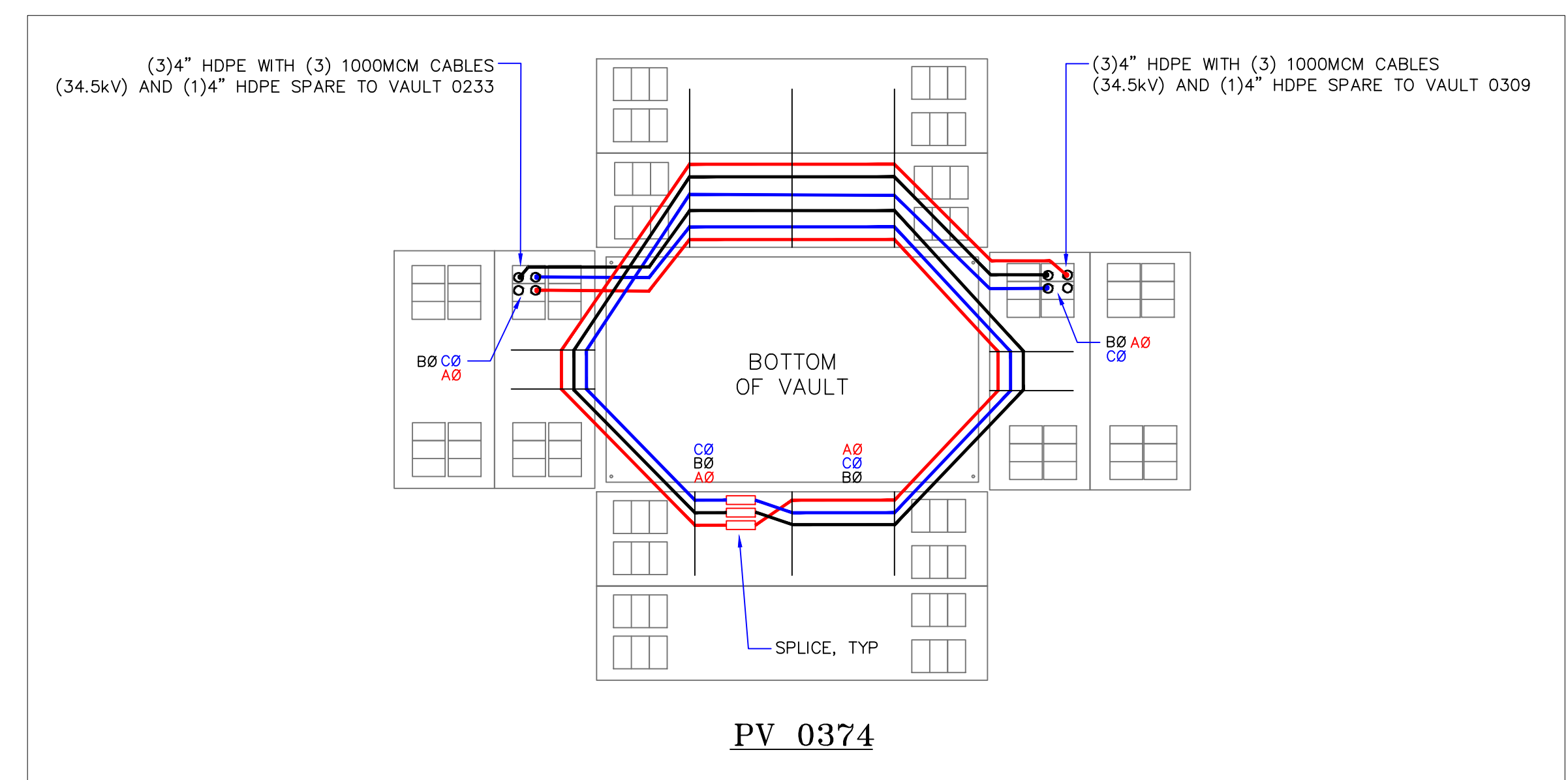
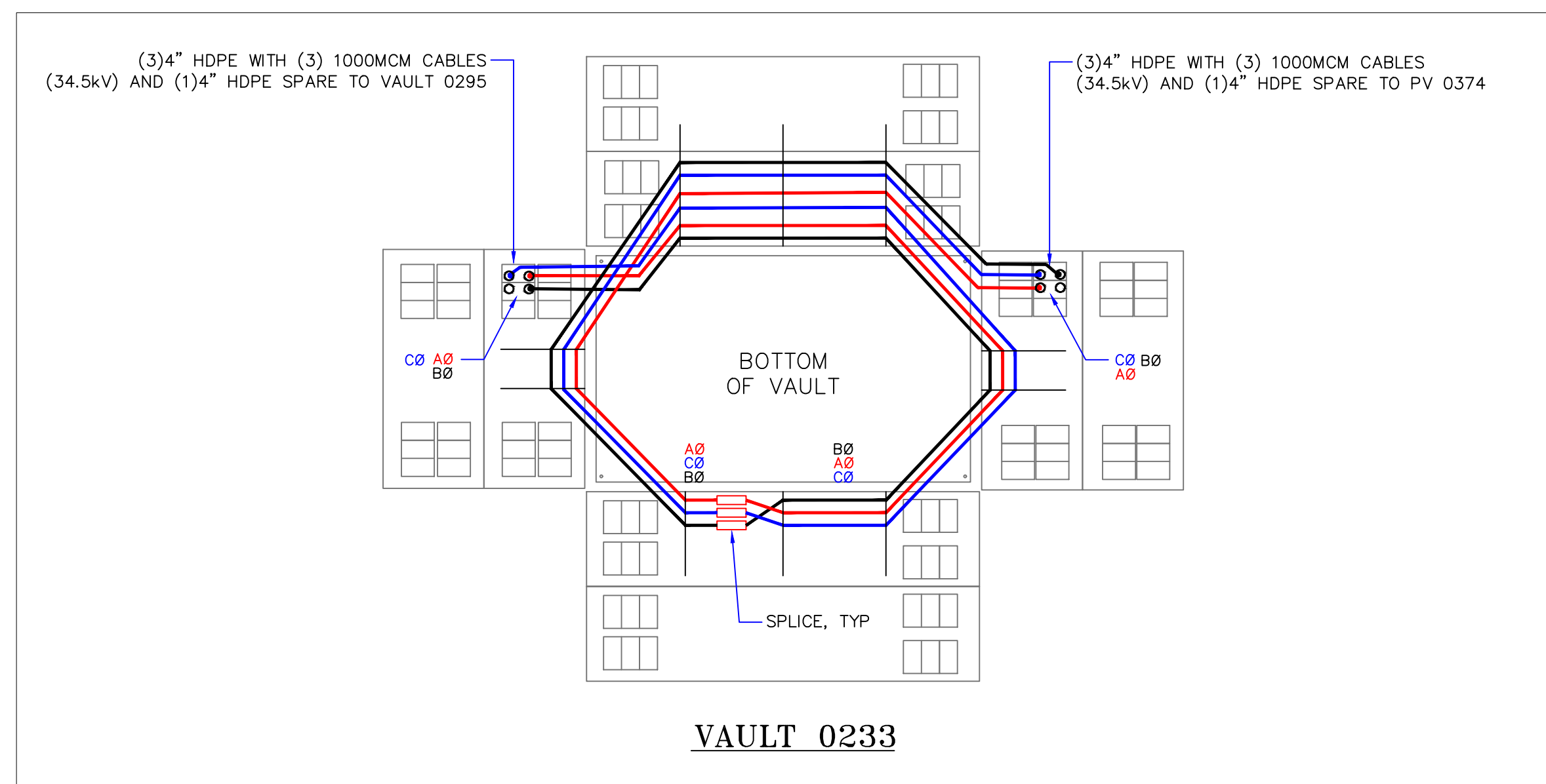
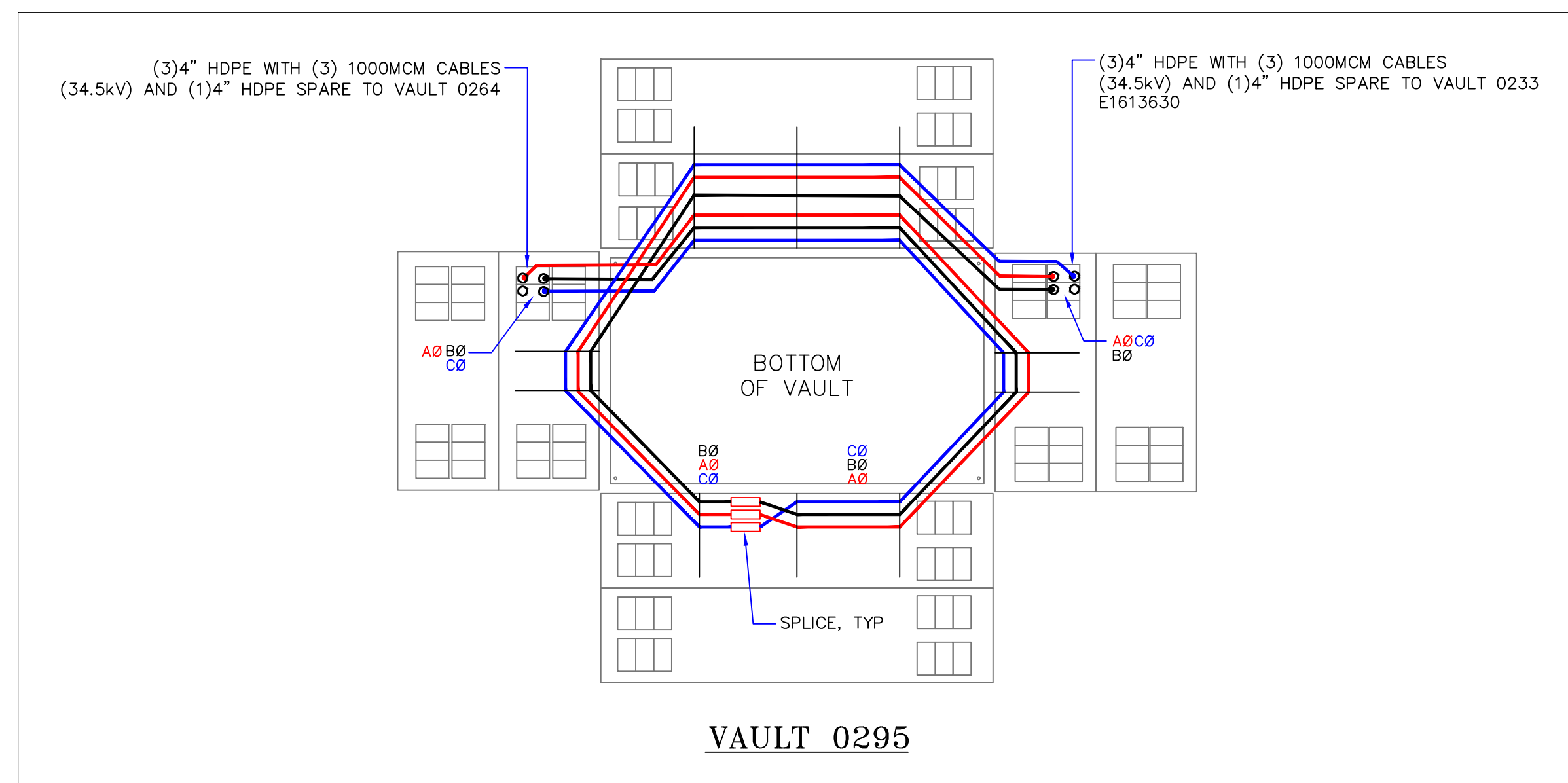
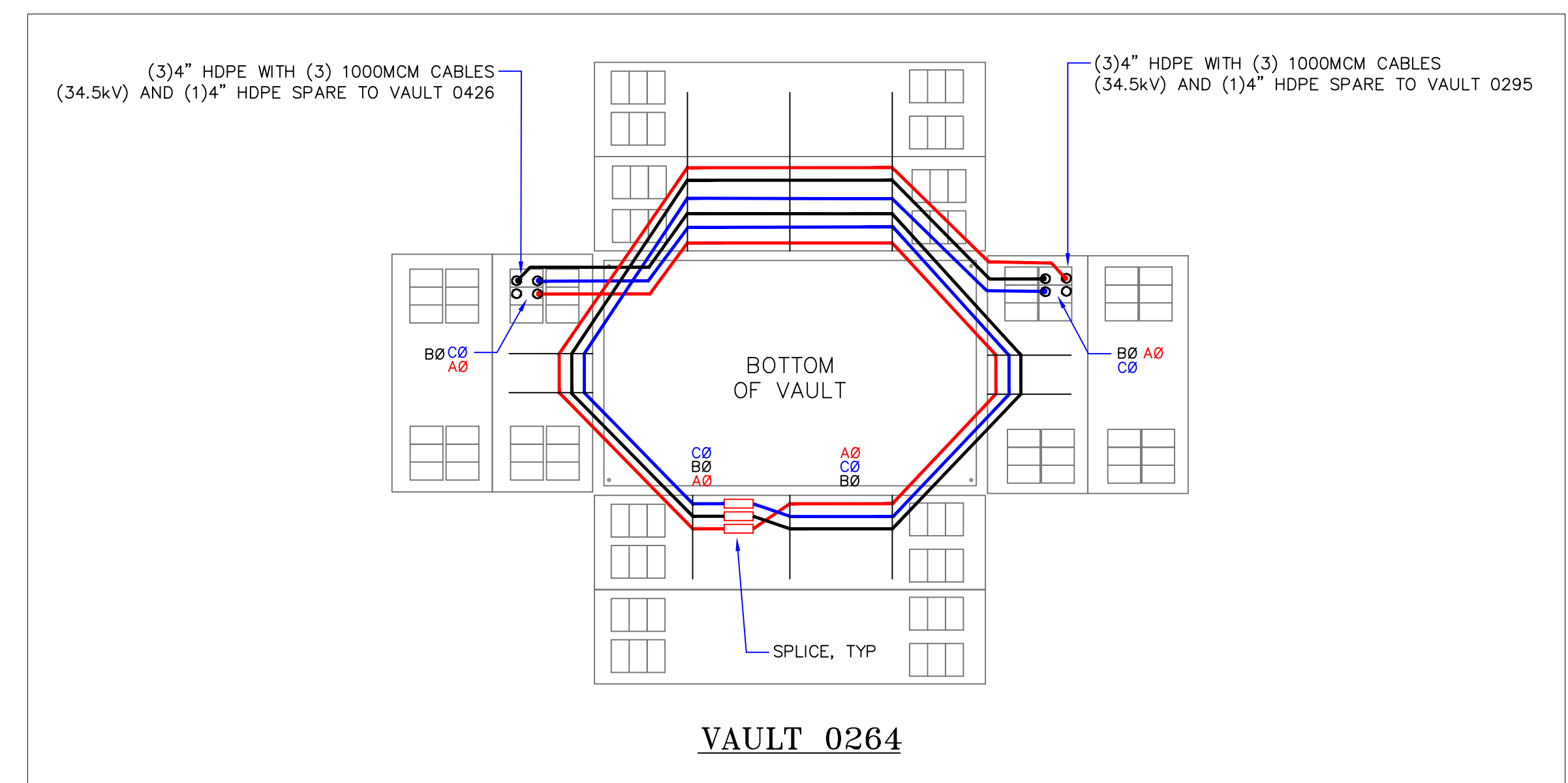
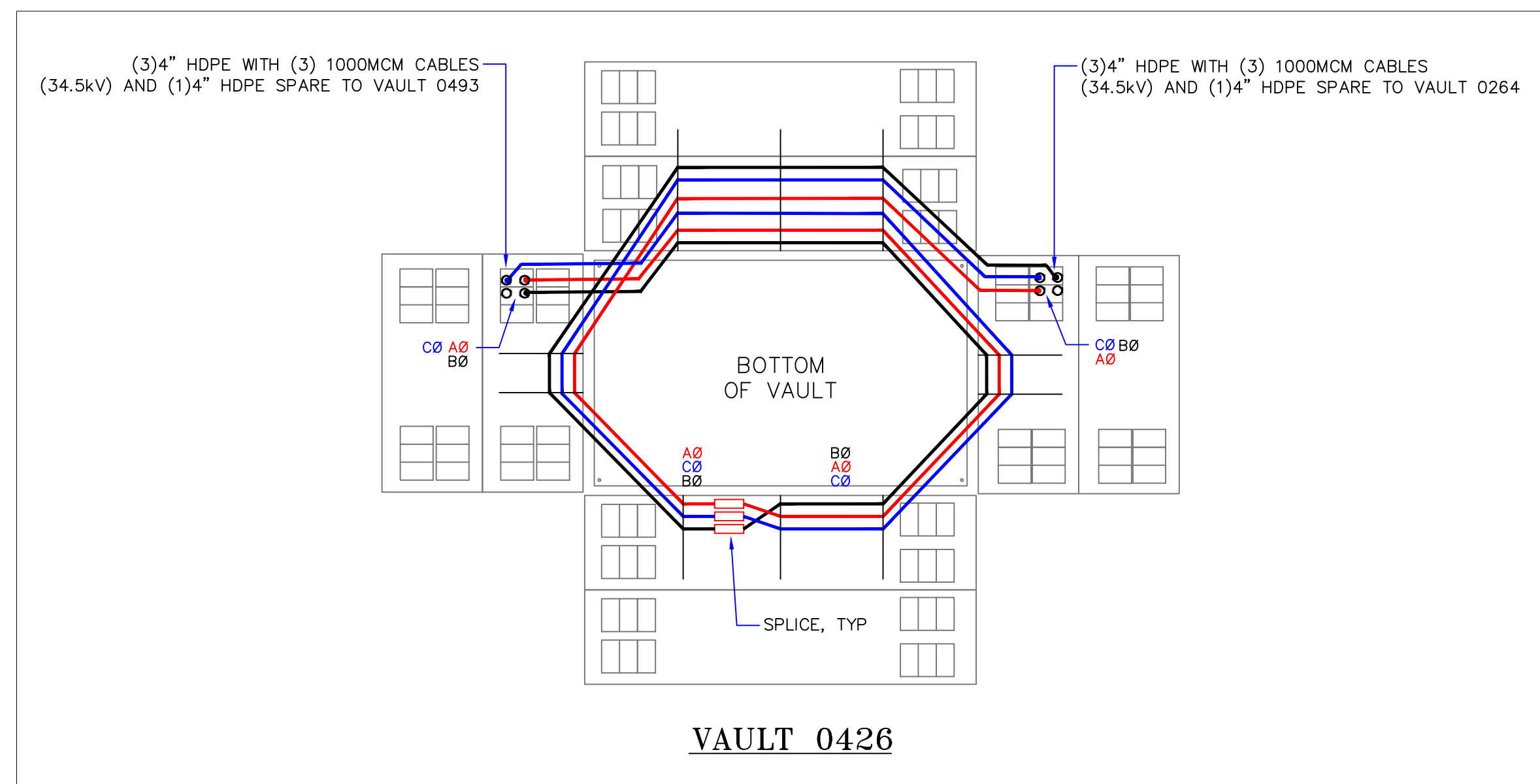
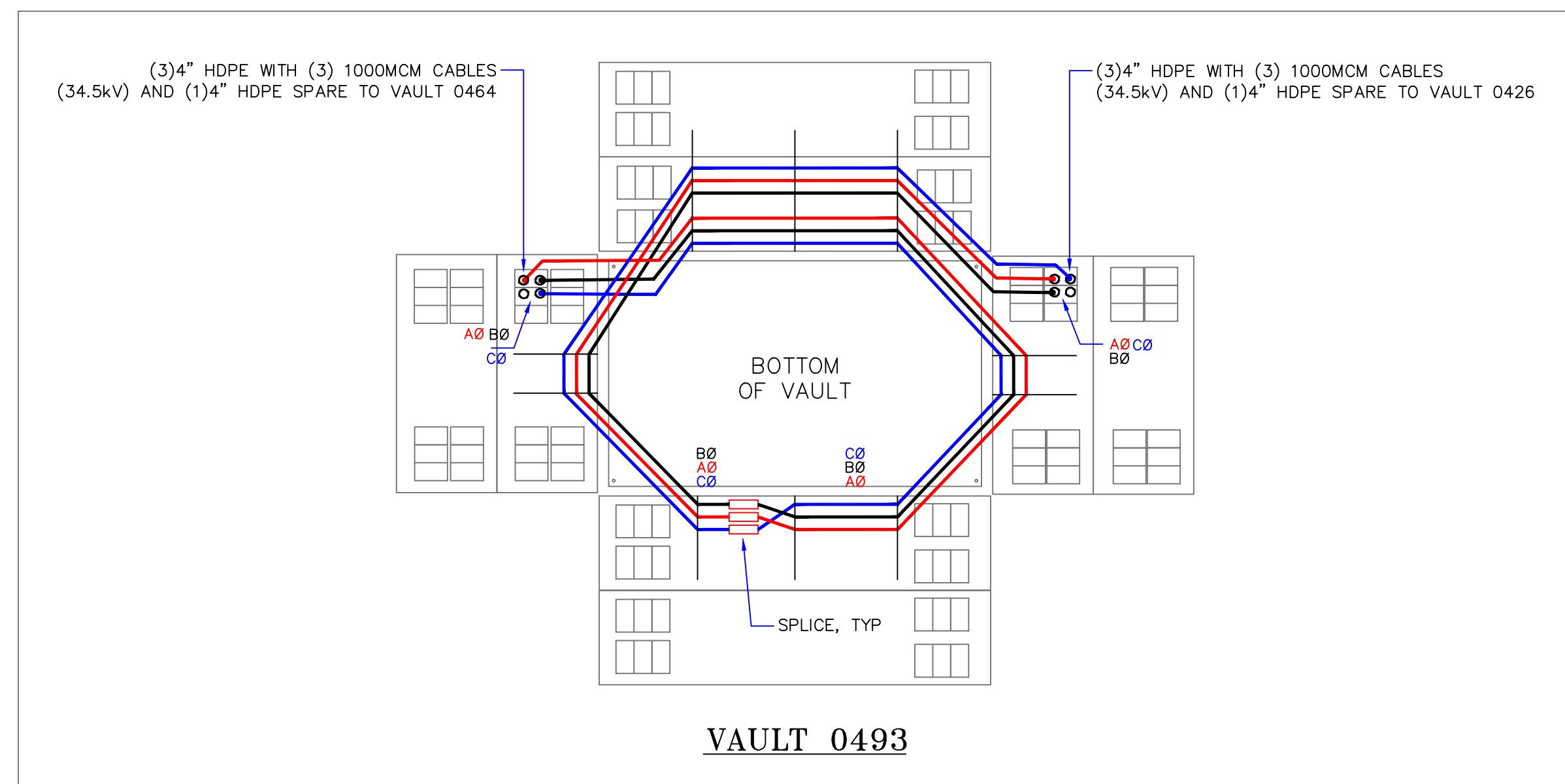
| NO. | DESIGN/CONSTRUCTION/ASBUILT REVISION | DWN. BY/DATE | REVISED MGR./SUPV./DATE | APPROVED DIRECTOR/DATE | ENG. STAMP |
|-----|--------------------------------------|--------------|-------------------------|------------------------|------------|
| 0 | ISSUED FOR CONSTRUCTION | ME 05/02/23 | BQ 5/2/23 | | |

| NO. | RECORD REVISION | CAD DRAWN BY | W.P.# | W.O. NUMBER | RECORD APPROVED | DATE |
|-----|-----------------|--------------|-------|-------------|-----------------|----------|
| 1 | X | CC | - | - | XXX | 11/11/19 |



Chugach Electric Association, Inc.
5601 Electron Drive - P.O. Box 196300
Anchorage, Alaska 99519-6300

| DRAWING NAME: | 34.5KV SUBTRANSMISSION LINE KLATT - 94TH JCT STRUCTURAL & ASSEMBLY OLD SEWARD 34.5KV O'MALLEY ROAD TO DIMOND BLVD |
|----------------------------------|---|
| CONFIDENTIAL | KLSJ-SS-0015-0001-0 |
| DRAWING NO. - PREVIOUS/REFERENCE | |
| DRAWING NO.: | KLSJ-SS-0015 |
| SHEET 0001 OF 0001 | PAGE OF |



| | | | | |
|---|--|--------------------------------------|--------------|--------------------------|
| PROJECT: OLD SEWARD 34.5KV O'MALLEY ROAD TO DIMOND BLVD | | | | |
| ENG./DESIGN.: M. ELLIOTT & V. KRIVONOSOV | | | | |
| NO. | | DESIGN/CONSTRUCTION/ASBUILT REVISION | DWN. BY/DATE | REVIEWED MGR./SUPV./DATE |
| 0 | | ISSUED FOR CONSTRUCTION | ME 05/02/23 | 5/2/23 |
| | | | | |
| | | | | |
| | | | | |
| | | | | |
| | | | | |
| | | | | |

| NO. | RECORD REVISION | CAD DRAWN BY | W.P.# | W.O. NUMBER | RECORD APPROVED | DATE |
|-----|-----------------|--------------|-------|-------------|-----------------|----------|
| 1 | X | CC | - | - | xxx | 11/11/19 |
| | | | | | | |
| | | | | | | |
| | | | | | | |
| | | | | | | |
| | | | | | | |
| | | | | | | |
| | | | | | | |
| | | | | | | |
| | | | | | | |



Chugach Electric Association, Inc.
5601 Electron Drive - P.O. Box 196300
Anchorage, Alaska 99519-6300

| | |
|----------------------------------|---|
| DRAWING NAME: | 34.5KV SUBTRANSMISSION LINE KLATT - 94TH JCT VAULT DETAILS OLD SEWARD 34.5KV O'MALLEY ROAD TO DIMOND BLVD |
| DRAWING NO. - PREVIOUS/REFERENCE | KLSJ-SS-0016-0001-0 |
| NEW DRAWING NO.: | KLSJ-SS-0016 |
| SHEET | 0001 OF 0001 |
| PAGE | OF |