

Vicinity Map

CONDUCTOR DATA

Manuf. _____	Manuf. _____
Manuf. Date _____	Manuf. Date _____
Volt Rating _____	Volt Rating _____
Insul. Type _____	Insul. Type _____
Insul. Size _____	Insul. Size _____
Cond. Size/Type _____	Cond. Size/Type _____
Quantity in Feet _____	Quantity in Feet _____
Manuf. _____	Manuf. _____
Manuf. Date _____	Manuf. Date _____
Volt Rating _____	Volt Rating _____
Insul. Type _____	Insul. Type _____
Insul. Size _____	Insul. Size _____
Cond. Size/Type _____	Cond. Size/Type _____
Quantity in Feet _____	Quantity in Feet _____

CALL BEFORE YOU DIG!

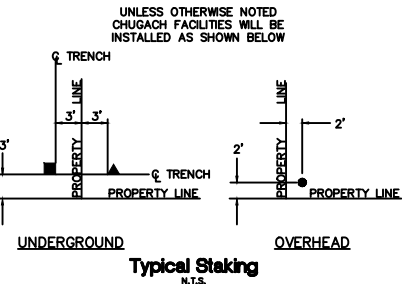
LOCATE CALL CENTER OF ALASKA (LCCA)	
ANCHORAGE AREA.....	278-3121
STATEWIDE.....	800-478-3121
AT&T ALASCOM INC.....	264-8465
ALASKA RAILROAD UTILITIES.....	265-2457
ALYESKA CABLE TV (GIRDWOOD).....	783-2982
KULIS AIR BASE.....	249-1499
MILITARY PETROLEUM FUEL LINES.....	552-2334
	OR 552-5342
STATE STORM DRAINS & STREET LIGHTS.....	333-2411

CONSTRUCTION LEGEND

NEW	EXISTING

R.O.W. LEGEND

	R.O.W. LINE
	CENTERLINE OF TRENCH



VICINITY MAP

PROJECT: STATE OF ALASKA - STERLING HIGHWAY MP 45-60 RELOCATION				
DESIGNER/PROJECT ENGINEER: M. ELLIOTT				
W.O. #: E1913921				
NO.	DESIGN/CONSTRUCTION/ASBUILT REVISION	DWN BY/DATE	REVIEWED (MGR/SUPV)/DATE	APPROVED (DIRECTOR)/DATE
0	ISSUED FOR CONSTRUCTION	ME 01/08/26	1/9/26	

ENG. STAMP



Chugach Electric Association, Inc.
5601 Minnesota Drive - P.O. Box 196300
Anchorage, Alaska 99519-6300

DRAWING NAME:	STATE OF ALASKA - STERLING HIGHWAY RELOCATION STERLING HIGHWAY 45-60 GRID: C007, C008 MAP: SEC. 26, 27 OF T5N, R3W S.M. FEEDER: DAVES CREEK 352 ELECTRICAL
W.O. NO.: C.W.P. REF. NO.:	E1913921
	SHEET 0 OF 15

NOTES:
- ALL PRIMARY IS #2 ACSR
- COORDINATE WITH DOT CONTRACTOR FOR FINAL GRADE.

MATCH LINE #1

MATCH LINE #1

ASLS 2003-2
KPB PARCEL
TR B

ADNR PARCEL

USS 7937

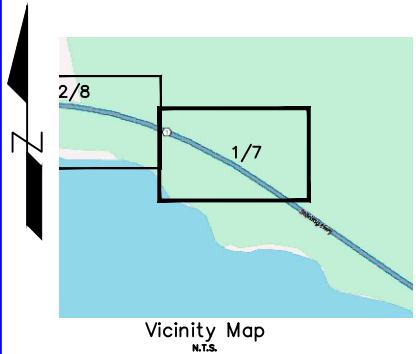
ELECTRICAL

INSTALL: 45/1
SET POLE: 7' DEEP
GUY NW: 33' LEAD
GUY NE: USE EXISTING ANCHOR
ROCK SET

INSTALL: 45/3
SET POLE: 8' DEEP
ROCK SET

INSTALL: 45/3
SET POLE: 7' DEEP
ROCK SET

INSTALL: 45/1
SET POLE: 7' DEEP
INLINE GUYS: 30' LEADS
ROCK SET



CONDUCTOR DATA			
Manuf.	Manuf.	Manuf.	Manuf.
Manuf. Date	Manuf. Date	Manuf. Date	Manuf. Date
Volt Rating	Volt Rating	Volt Rating	Volt Rating
Insul. Type	Insul. Type	Insul. Type	Insul. Type
Insul. Size	Insul. Size	Insul. Size	Insul. Size
Cond. Size/Type	Cond. Size/Type	Cond. Size/Type	Cond. Size/Type
Quantity in Feet	Quantity in Feet	Quantity in Feet	Quantity in Feet

CALL BEFORE YOU DIG!
LOCATE CALL CENTER OF ALASKA (LCCA)
ANCHORAGE AREA..... 278-3121
STATEWIDE..... 800-478-3121
AT&T ALASCOM INC..... 284-8465
ALASKA RAILROAD UTILITIES..... 265-2457
ALYESKA CABLE TV (GIRDWOOD)..... 783-2982
KULIS AIR BASE..... 249-1499
MILITARY PETROLEUM FUEL LINES..... 552-2334
OR 552-5342
STATE STORM DRAINS & STREET LIGHTS..... 333-2411

CONSTRUCTION LEGEND	
NEW	EXISTING

R.O.W. LEGEND	
	R.O.W. LINE
	CENTERLINE OF TRENCH

UNLESS OTHERWISE NOTED
CHUGACH FACILITIES WILL BE
INSTALLED AS SHOWN BELOW

Typical Staking
N.T.S.

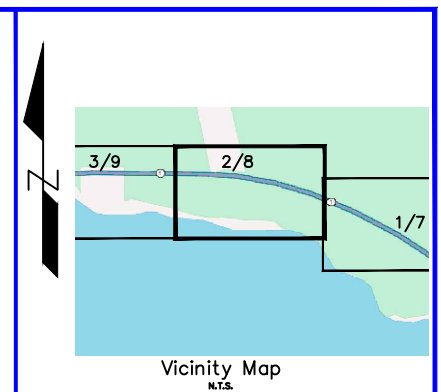
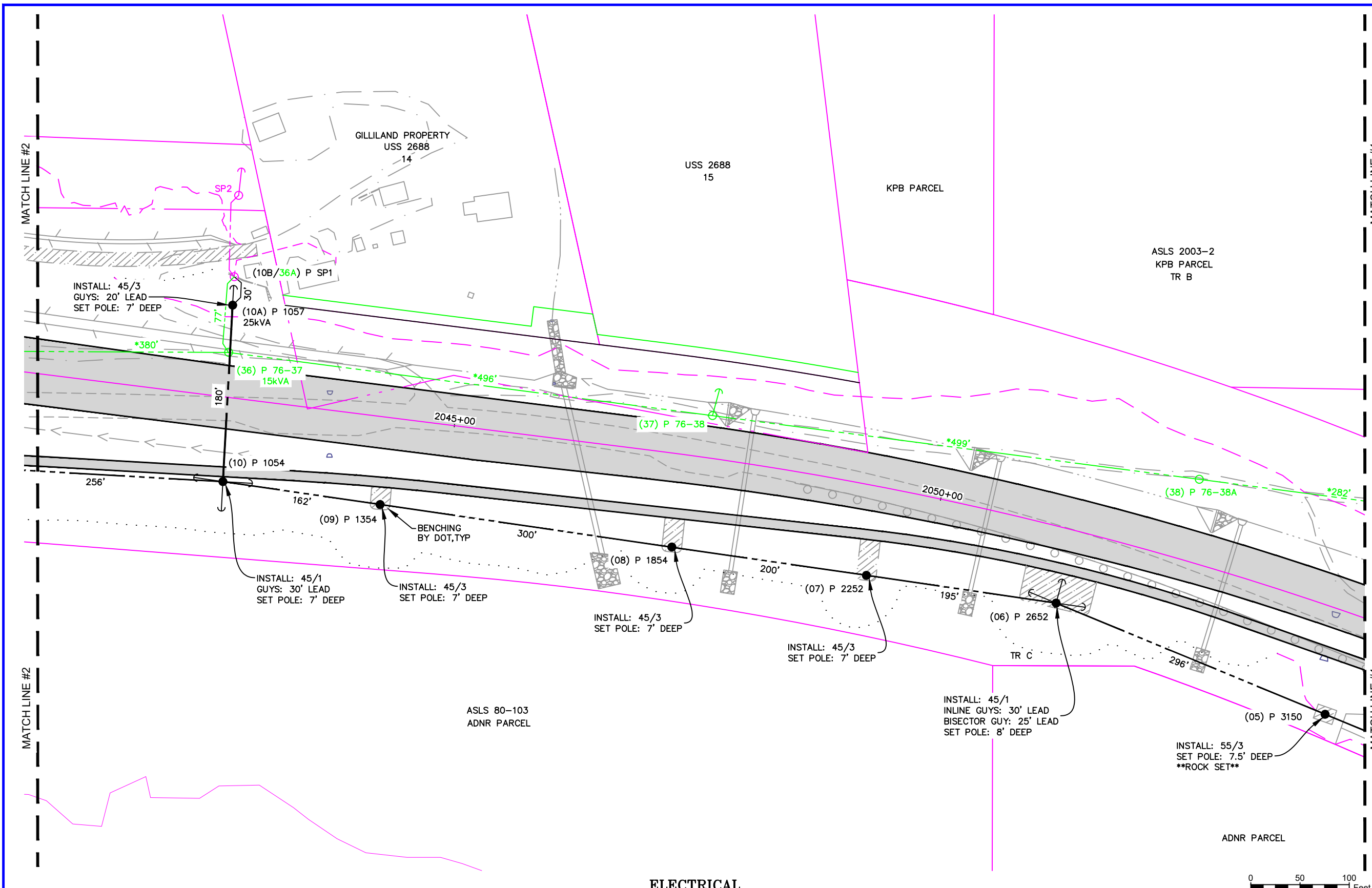
PROJECT: STATE OF ALASKA - STERLING HIGHWAY MP 45-60 RELOCATION				
DESIGNER/PROJECT ENGINEER: M. ELLIOTT			W.O. #: E1913921	
NO.	DESIGN/CONSTRUCTION/ASBUILT REVISION	DWN BY/DATE	REVIEWED (MGR/SUPV)/DATE	APPROVED (DIRECTOR)/DATE
0	ISSUED FOR CONSTRUCTION	ME 01/08/26	1/9/26	

ENG. STAMP

CHUGACH
POWERING ALASKA'S FUTURE

Chugach Electric Association, Inc.
5601 Minnesota Drive - P.O. Box 196300
Anchorage, Alaska 99519-6300

DRAWING NAME:	STATE OF ALASKA - STERLING HIGHWAY RELOCATION STERLING HIGHWAY 45-60 GRID: C007, C008 MAP: SEC. 26, 27 OF T5N, R3W S.M. FEEDER: DAVES CREEK 352 ELECTRICAL
W.O. NO.: C.W.P. REF. NO.:	E1913921
SHEET 1 OF 15	



CONDUCTOR DATA			
Manuf.	Manuf. Date	Manuf.	Manuf. Date
Vol. Rating	Vol. Rating	Vol. Rating	Vol. Rating
Insul. Type	Insul. Type	Insul. Type	Insul. Type
Cond. Size/Type	Cond. Size/Type	Cond. Size/Type	Cond. Size/Type
Quantity in Feet	Quantity in Feet	Quantity in Feet	Quantity in Feet

CALL BEFORE YOU DIG!

LOCATE CALL CENTER OF ALASKA (LCCA)

ANCHORAGE AREA..... 278-3121

STATEWIDE..... 800-478-3121

AT&T ALASCOM INC..... 284-8465

ALASKA RAILROAD UTILITIES..... 265-2457

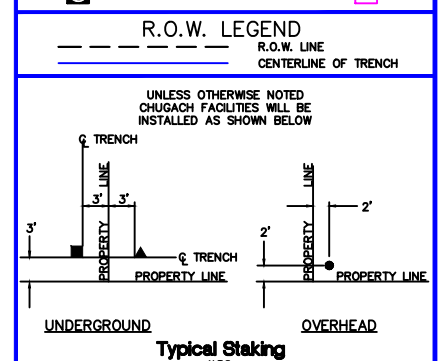
ALYSCA CABLE TV (GIRDWOOD)..... 783-2982

KULIS AIR BASE..... 249-1499

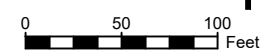
MILITARY PETROLEUM FUEL LINES..... 552-2334 OR 552-5342

STATE STORM DRAINS & STREET LIGHTS..... 333-2411

CONSTRUCTION LEGEND	
NEW	EXISTING



ELECTRICAL



PROJECT: STATE OF ALASKA - STERLING HIGHWAY MP 45-60 RELOCATION				
DESIGNER/PROJECT ENGINEER: M. ELLIOTT		W.O. #: E1913921		
NO.	DESIGN/CONSTRUCTION/ASBUILT REVISION	DWN BY/DATE	REVIEWED (MGR/SUPV)/DATE	APPROVED (DIRECTOR)/DATE
0	ISSUED FOR CONSTRUCTION	ME 01/08/26	1/9/26	

ENG. STAMP

CHUGACH

POWERING ALASKA'S FUTURE

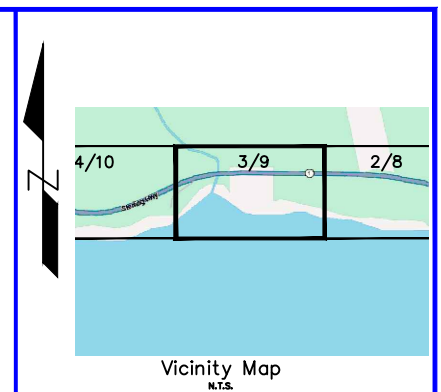
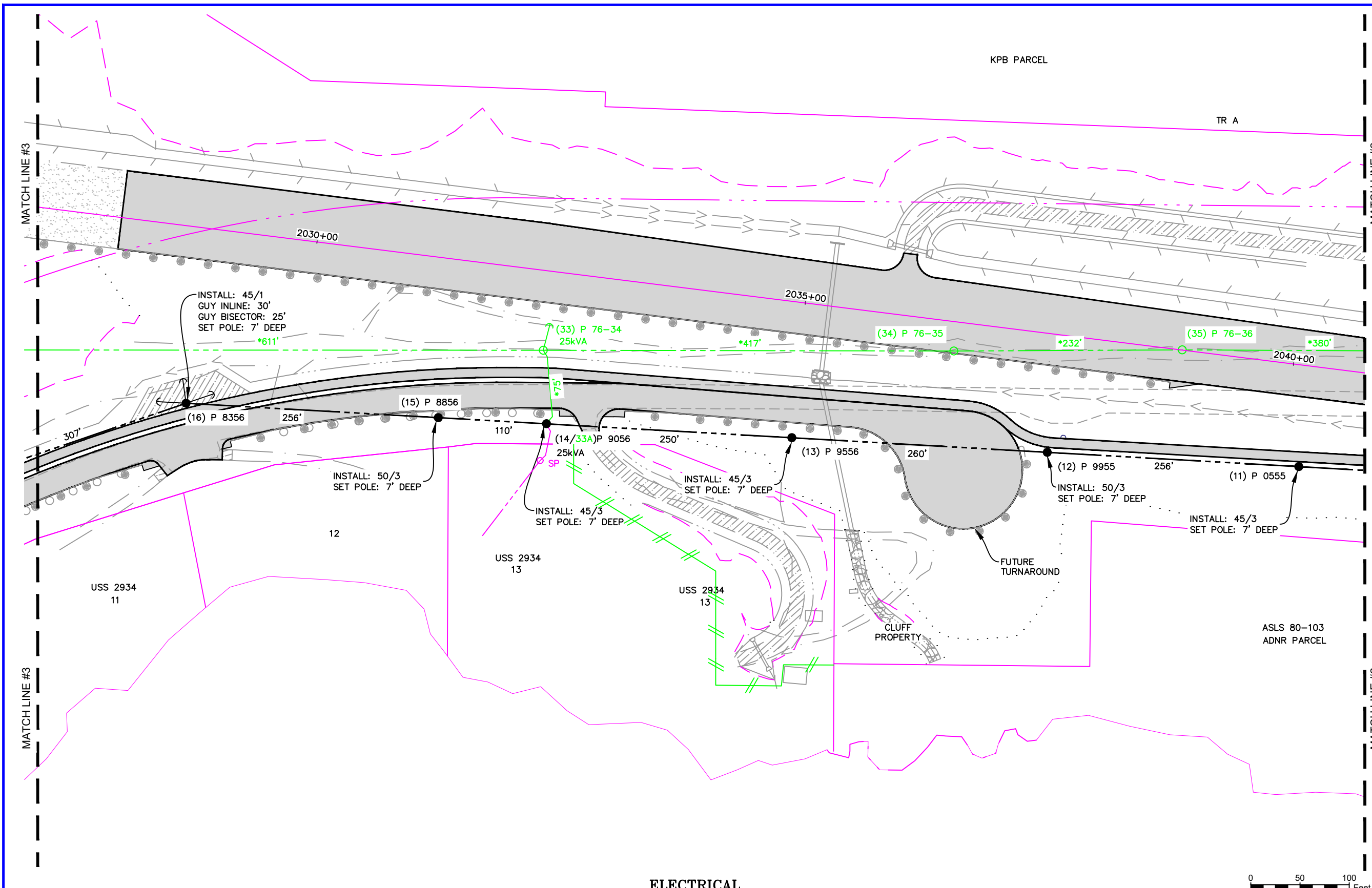
Chugach Electric Association, Inc.
5601 Minnesota Drive - P.O. Box 196300
Anchorage, Alaska 99519-6300

DRAWING NAME:

STATE OF ALASKA - STERLING HIGHWAY
RELOCATION STERLING HIGHWAY 45-60
GRID: C007, C008 MAP: SEC. 26, 27 OF T5N, R3W S.M.
FEEDER: DAVES CREEK 352
ELECTRICAL

W.O. NO.: E1913921

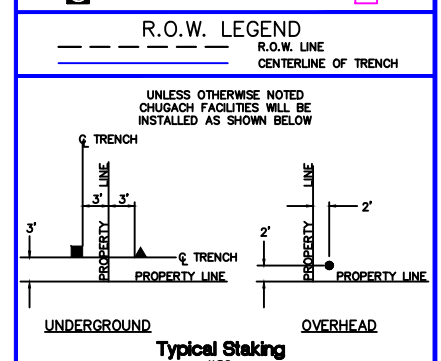
C.W.P. REF. NO.: SHEET 2 OF 15



CONDUCTOR DATA			
Manuf.	Manuf. Date	Manuf.	Manuf. Date
Volt Rating	Volt Rating	Insul. Type	Insul. Type
Insul. Size	Insul. Size	Cond. Size/Type	Cond. Size/Type
Quantity in Feet	Quantity in Feet	Quantity in Feet	Quantity in Feet
Manuf.	Manuf. Date	Manuf.	Manuf. Date
Volt Rating	Volt Rating	Insul. Type	Insul. Type
Insul. Size	Insul. Size	Cond. Size/Type	Cond. Size/Type
Quantity in Feet	Quantity in Feet	Quantity in Feet	Quantity in Feet

CALL BEFORE YOU DIG!	
LOCATE CALL CENTER OF ALASKA (LCCA)	278-3121
ANCHORAGE AREA	800-478-3121
STATEWIDE	284-8465
AT&T ALASCOM INC.	265-2457
ALASKA RAILROAD UTILITIES	783-2982
ALYESKA CABLE TV (GIRDWOOD)	249-1499
KULIS AIR BASE	552-2334
MILITARY PETROLEUM FUEL LINES	OR 552-5342
STATE STORM DRAINS & STREET LIGHTS	333-2411

CONSTRUCTION LEGEND	
NEW	EXISTING



PROJECT: STATE OF ALASKA - STERLING HIGHWAY MP 45-60 RELOCATION				
DESIGNER/PROJECT ENGINEER: M. ELLIOTT		W.O. #: E1913921		
NO.	DESIGN/CONSTRUCTION/ASBUILT REVISION	DWN BY/DATE	REVIEWED (MGR/SUPV)/DATE	APPROVED (DIRECTOR)/DATE
0	ISSUED FOR CONSTRUCTION	ME 01/08/26	1/9/26	

ENG. STAMP

Chugach Electric Association, Inc.
5601 Minnesota Drive - P.O. Box 196300
Anchorage, Alaska 99519-6300

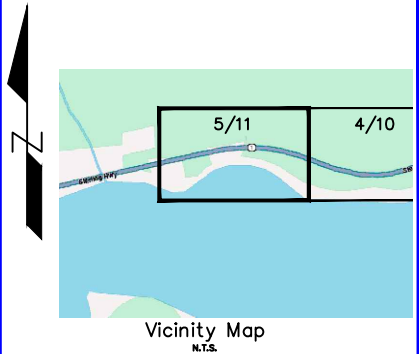
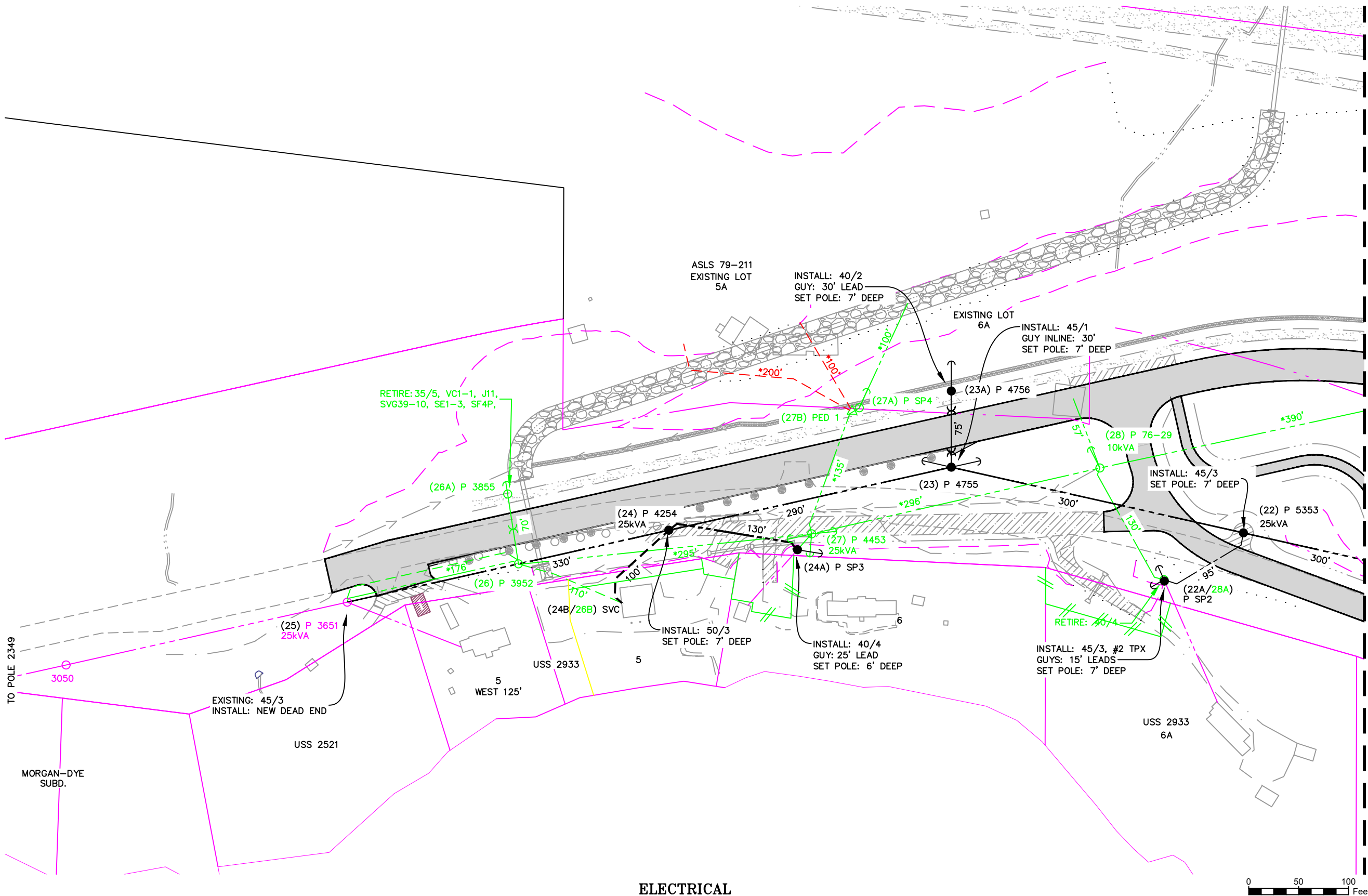
DRAWING NAME:

STATE OF ALASKA - STERLING HIGHWAY
RELOCATION STERLING HIGHWAY 45-60
GRID: C007, C008 MAP: SEC. 26, 27 OF T5N, R3W S.M.
FEEDER: DAVES CREEK 352
ELECTRICAL

W.O. NO.:
C.W.P. REF. NO.:

E1913921

SHEET 3 OF 15



CONDUCTOR DATA			
Manuf.	Manuf. Date	Manuf.	Manuf. Date
Volt Rating	Volt Rating	Manuf.	Manuf. Date
Insul. Type	Insul. Type	Insul. Type	Insul. Type
Insul. Size	Insul. Size	Insul. Size	Insul. Size
Cond. Size/Type	Cond. Size/Type	Cond. Size/Type	Cond. Size/Type
Quantity in Feet	Quantity in Feet	Quantity in Feet	Quantity in Feet

CALL BEFORE YOU DIG!

LOCATE CALL CENTER OF ALASKA (LCCA)

ANCHORAGE AREA..... 278-3121

STATEWIDE..... 800-478-3121

AT&T ALASCOM INC..... 284-8465

ALASKA RAILROAD UTILITIES..... 265-2457

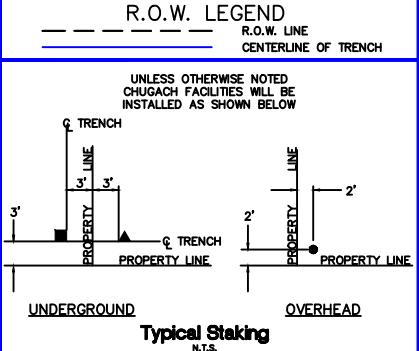
ALYKA CABLE TV (GIRDWOOD)..... 783-2982

KULIS AIR BASE..... 249-1499

MILITARY PETROLEUM FUEL LINES..... 552-2334 OR 552-5342

STATE STORM DRAINS & STREET LIGHTS..... 333-2411

CONSTRUCTION LEGEND	
NEW	EXISTING



ELECTRICAL

PROJECT: STATE OF ALASKA - STERLING HIGHWAY MP 45-60 RELOCATION				
DESIGNER/PROJECT ENGINEER: M. ELLIOTT			W.O. #: E1913921	
NO.	DESIGN/CONSTRUCTION/ASBUILT REVISION	DWN BY/DATE	REVIEWED (MGR/SUPV)/DATE	APPROVED (DIRECTOR)/DATE
0	ISSUED FOR CONSTRUCTION	ME 01/08/26	Jm 1/9/26	

ENG. STAMP



Chugach Electric Association, Inc.
5601 Minnesota Drive - P.O. Box 196300
Anchorage, Alaska 99519-6300

DRAWING NAME:	STATE OF ALASKA - STERLING HIGHWAY RELOCATION STERLING HIGHWAY 45-60 GRID: C007, C008 MAP: SEC. 26, 27 OF T5N, R3W S.M. FEEDER: DAVES CREEK 352 ELECTRICAL
W.O. NO.: C.W.P. REF. NO.:	E1913921
SHEET 5 OF 15	

NOTES:

- ALL PRIMARY IS #2 ACSR
- COORDINATE WITH DOT CONTRACTOR FOR FINAL GRADE.

ALASKA LAND SURVEY 2003-2
TRACT H

ALASKA LAND SURVEY 2003-2
TRACT H















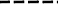

















Vicinity Map
N.T.S.

CONDUCTOR DATA	
Manuf. _____	Manuf. _____
Manuf. Date _____	Manuf. Date _____
Volt. Rating _____	Volt. Rating _____
Insul. Type _____	Insul. Type _____
Insul. Size _____	Insul. Size _____
Cond. Size/Type _____	Cond. Size/Type _____
Quantity in Feet _____	Quantity in Feet _____
Manuf. _____	Manuf. _____
Manuf. Date _____	Manuf. Date _____
Volt. Rating _____	Volt. Rating _____
Insul. Type _____	Insul. Type _____
Insul. Size _____	Insul. Size _____
Cond. Size/Type _____	Cond. Size/Type _____
Quantity in Feet _____	Quantity in Feet _____

CALL BEFORE YOU DIG!

LOCATE CALL CENTER OF ALASKA (LCCA)	
ANCHORAGE AREA.....	278-3121
STATEWIDE.....	800-478-3121
AT&T ALASCOM INC.	264-8465
ALASKA RAILROAD UTILITIES.....	265-2457
ALYESKA CABLE TV (GIRDWOOD).....	783-2982
KULIS AIR BASE.....	249-1499
MILITARY PETROLEUM FUEL LINES.....	552-2334
	OR 552-5342
STATE STORM DRAINS & STREET LIGHTS.....	333-2411

CONSTRUCTION LEGEND

NEW	EXISTING
	
PADMOUNT TRANSFORMER	
	
PEDESTAL	
	
POWER POLE	
	
STREET LIGHT	
	
WARNING POST	
	
1ø U.G. PRI. CONDUCTOR	
	
3ø U.G. PRI. CONDUCTOR	
	
U.G. SECONDARY CONDUCT.	
	
U.G. STREET LIGHT CONDUCT.	
	
1ø O.H. CONDUCTOR	
	
3ø O.H. CONDUCTOR	
	
JUNCTION BOX	
	
SPICE POINT	
	
SPARE CONDUIT	
	
CONDUIT W/ CONDUCTOR	
	
SWITCH CABINET	

R.O.W. LEGEND

--- R.O.W. LINE
 _____ CENTERLINE OF TRENCH

UNLESS OTHERWISE NOTED
CHUGACH FACILITIES WILL BE
INSTALLED AS SHOWN BELOW

ELECTRICAL

RIGHT-OF-WAY

[illegible]

ENG. STAMP

CHUGACH
POWERING ALASKA'S FUTURE

Chugach Electric Association, Inc.
5601 Minnesota Drive - P.O. Box 196300
Anchorage, Alaska 99519-6300

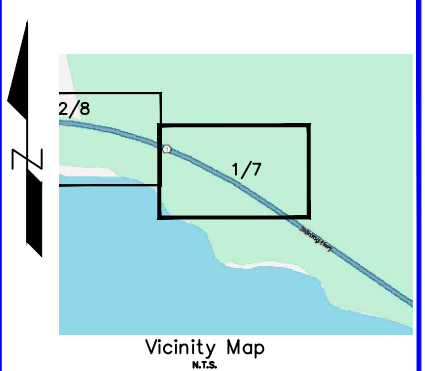
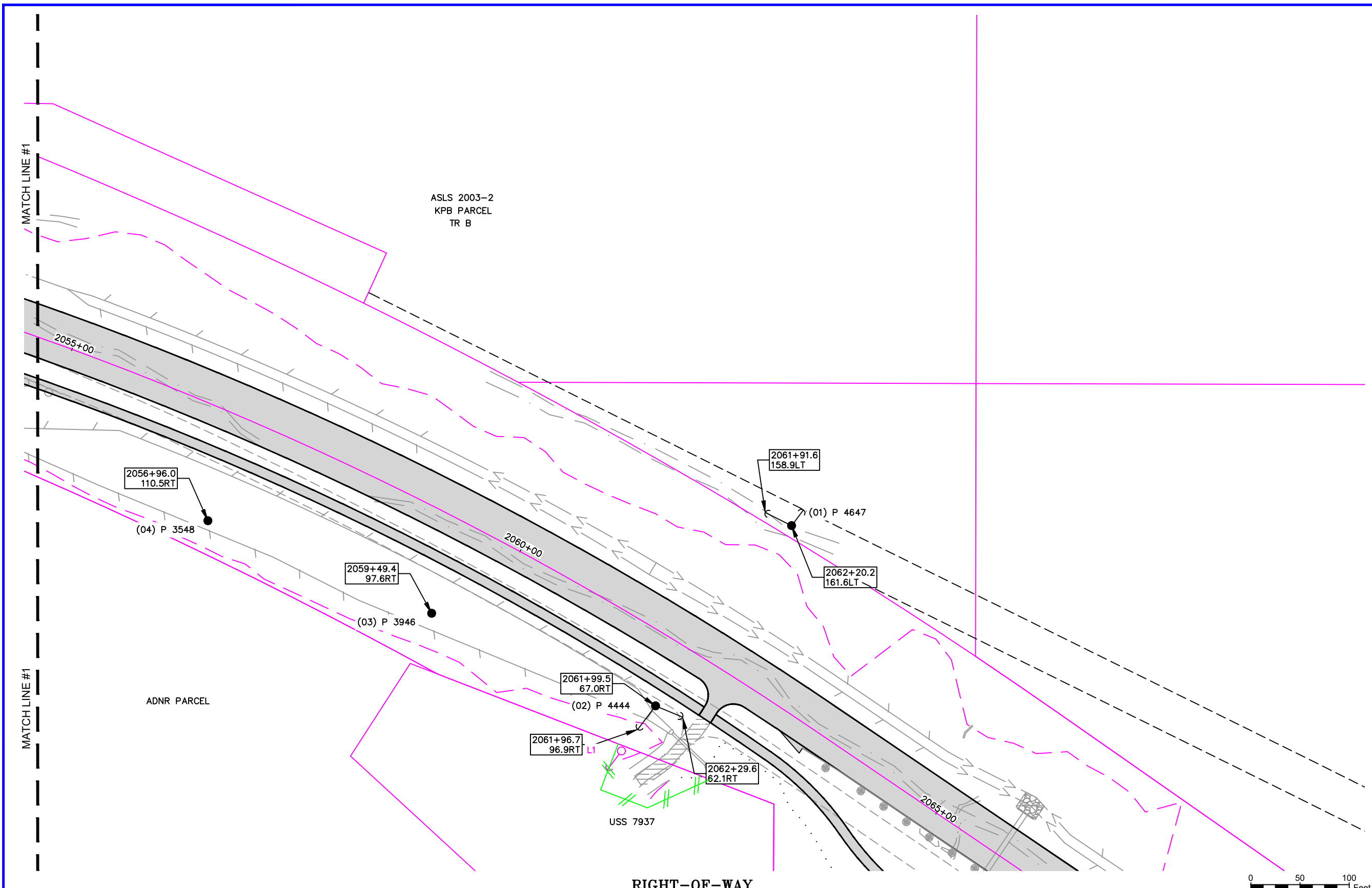
DRAWING NAME:

STATE OF ALASKA - STERLING HIGHWAY
RELOCATION STERLING HIGHWAY 45-60
GRID: C007, C008 MAP: SEC. 26, 27 OF T5N, R3W S.M.
FEEDER: DAVES CREEK 352
QUARTZ CREEK ROAD

W.O. NO.:
C.W.P. REF. NO.:

E1913921

SHEET **6** OF **15**



CONDUCTOR DATA			
Manuf.	Manuf. Date	Manuf.	Manuf. Date
Volt Rating	Volt Rating	Insul. Type	Insul. Type
Insul. Size	Insul. Size	Cond. Size/Type	Cond. Size/Type
Quantity in Feet	Quantity in Feet	Quantity in Feet	Quantity in Feet

CALL BEFORE YOU DIG!

LOCATE CALL CENTER OF ALASKA (LCCA)

ANCHORAGE AREA..... 278-3121

STATEWIDE..... 800-478-3121

AT&T ALASCOM INC..... 284-8465

ALASKA RAILROAD UTILITIES..... 265-2457

ALYESKA CABLE TV (GIRDWOOD)..... 783-2982

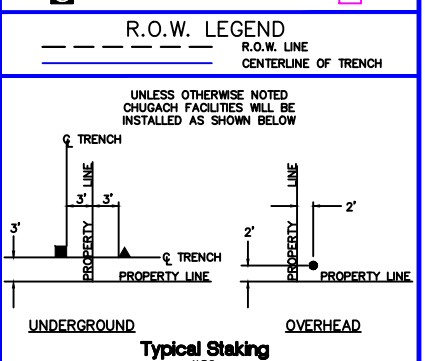
KULIS AIR BASE..... 249-1499

MILITARY PETROLEUM FUEL LINES..... 552-2334

OR 552-5342

STATE STORM DRAINS & STREET LIGHTS..... 333-2411

CONSTRUCTION LEGEND	
NEW	EXISTING



PROJECT: STATE OF ALASKA - STERLING HIGHWAY MP 45-60 RELOCATION				
DESIGNER/PROJECT ENGINEER: M. ELLIOTT			W.O. #: E1913921	
NO.	DESIGN/CONSTRUCTION/ASBUILT REVISION	DWN BY/DATE	REVIEWED (MGR/SUPV)/DATE	APPROVED (DIRECTOR)/DATE
0	ISSUED FOR CONSTRUCTION	ME 01/08/26	1/9/26	

ENG. STAMP

CHUGACH

POWERING ALASKA'S FUTURE

Chugach Electric Association, Inc.
5601 Minnesota Drive - P.O. Box 196300
Anchorage, Alaska 99519-6300

DRAWING NAME: STATE OF ALASKA - STERLING HIGHWAY RELOCATION STERLING HIGHWAY 45-60

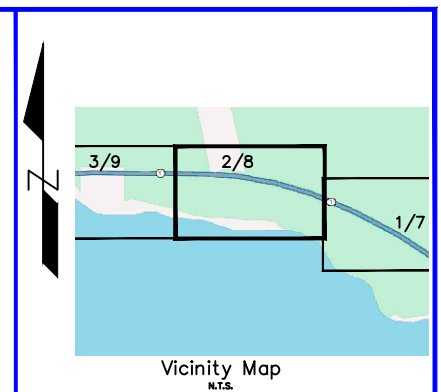
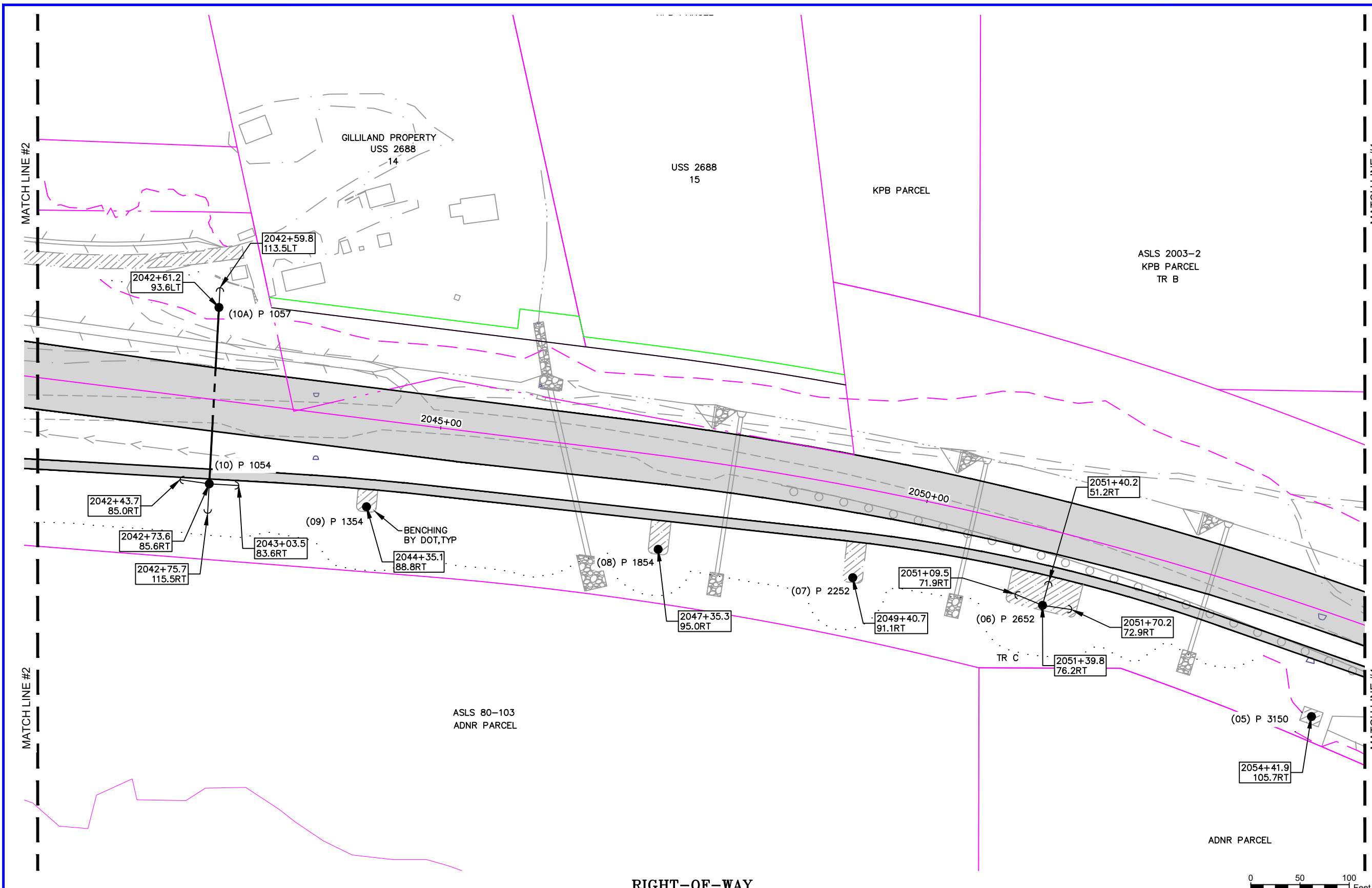
GRID: C007, C008 MAP: SEC. 26, 27 OF T5N, R3W S.M.

FEEDER: DAVES CREEK 352

RIGHT-OF-WAY

W.O. NO.: E1913921

C.W.P. REF. NO.: SHEET 7 OF 15



CONDUCTOR DATA			
Manuf.	Manuf. Date	Manuf.	Manuf. Date
Insul. Type	Insul. Size	Insul. Type	Insul. Size
Cond. Size/Type	Quantity in Feet	Cond. Size/Type	Quantity in Feet

CALL BEFORE YOU DIG!

LOCATE CALL CENTER OF ALASKA (LCCA)

ANCHORAGE AREA..... 278-3121

STATEWIDE..... 800-478-3121

AT&T ALASCOM INC..... 284-8465

ALASKA RAILROAD UTILITIES..... 265-2457

ALYSCA CABLE TV (GIRDWOOD)..... 783-2982

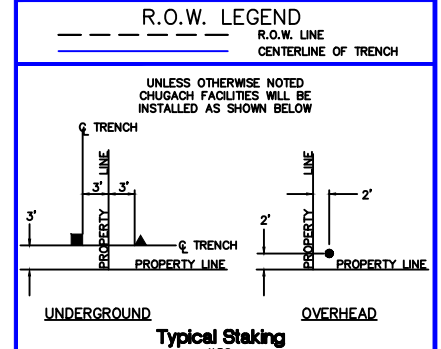
KULIS AIR BASE..... 249-1499

MILITARY PETROLEUM FUEL LINES..... 552-2334

OR 552-5342

STATE STORM DRAINS & STREET LIGHTS..... 333-2411

CONSTRUCTION LEGEND	
NEW	EXISTING



PROJECT: STATE OF ALASKA - STERLING HIGHWAY MP 45-60 RELOCATION				
DESIGNER/PROJECT ENGINEER: M. ELLIOTT				
W.O. #: E1913921				
NO.	DESIGN/CONSTRUCTION/ASBUILT REVISION	DWN BY/DATE	REVIEWED (MGR/SUPV)/DATE	APPROVED (DIRECTOR)/DATE
0	ISSUED FOR CONSTRUCTION	ME 01/08/26	1/9/26	

ENG. STAMP

CHUGACH

POWERING ALASKA'S FUTURE

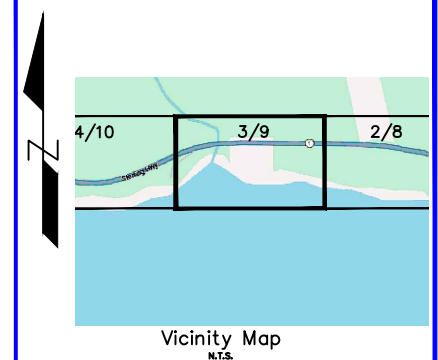
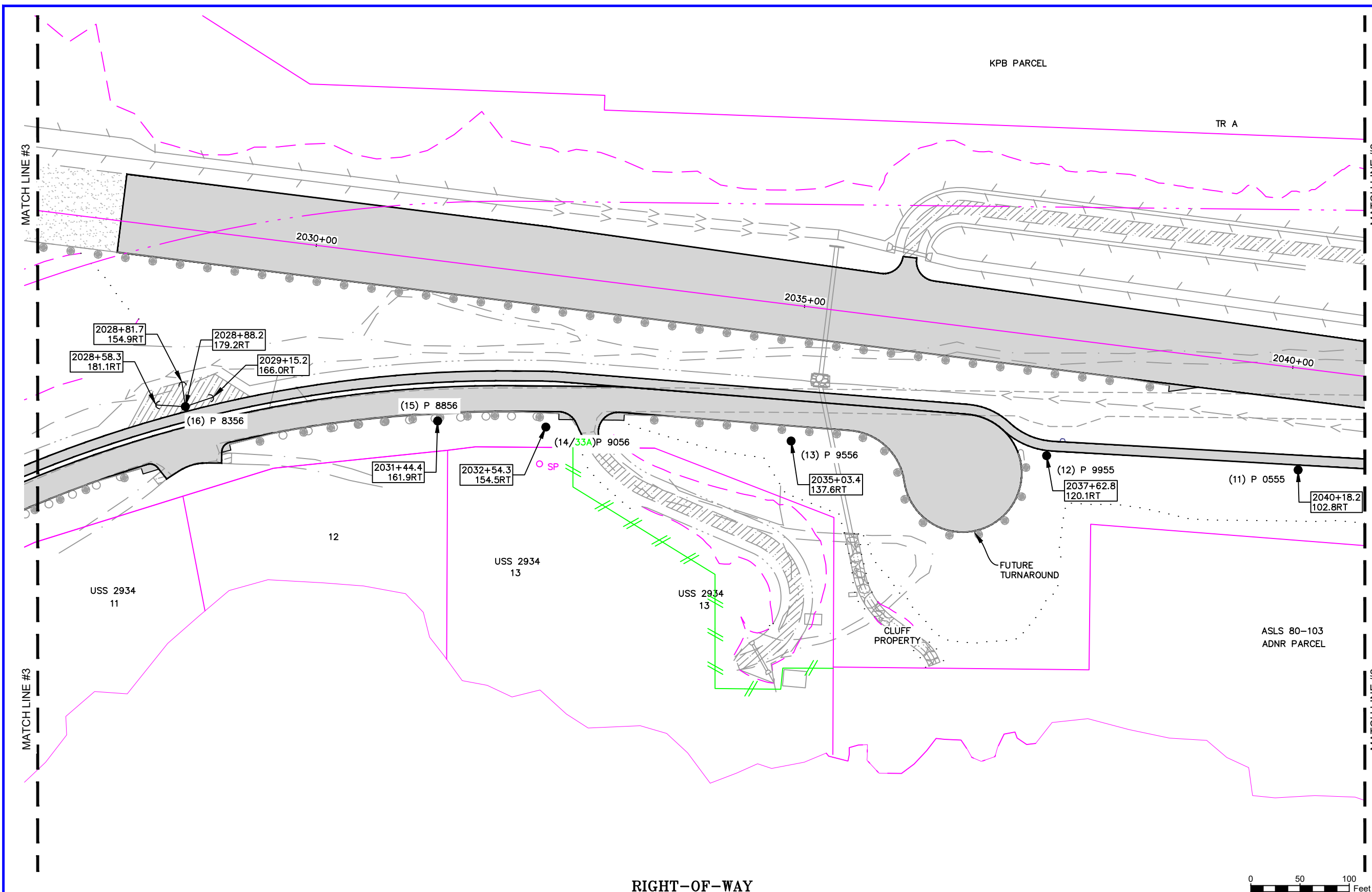
Chugach Electric Association, Inc.
5601 Minnesota Drive - P.O. Box 196300
Anchorage, Alaska 99519-6300

DRAWING NAME:

STATE OF ALASKA - STERLING HIGHWAY
RELOCATION STERLING HIGHWAY 45-60
GRID: C007, C008 MAP: SEC. 26, 27 OF T5N, R3W S.M.
FEEDER: DAVES CREEK 352
RIGHT-OF-WAY

W.O. NO.: E1913921

C.W.P. REF. NO.: SHEET 8 OF 15















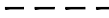

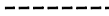

















CONDUCTOR DATA	
Manuf. _____	Manuf. _____
Manuf. Date _____	Manuf. Date _____
Volt Rating _____	Volt Rating _____
Insul. Type _____	Insul. Type _____
Insul. Size _____	Insul. Size _____
Cond. Size/Type _____	Cond. Size/Type _____
Quantity In Feet _____	Quantity In Feet _____
Manuf. _____	Manuf. _____
Manuf. Date _____	Manuf. Date _____
Volt Rating _____	Volt Rating _____
Insul. Type _____	Insul. Type _____
Insul. Size _____	Insul. Size _____
Cond. Size/Type _____	Cond. Size/Type _____
Quantity In Feet _____	Quantity In Feet _____

CALL BEFORE YOU DIG!

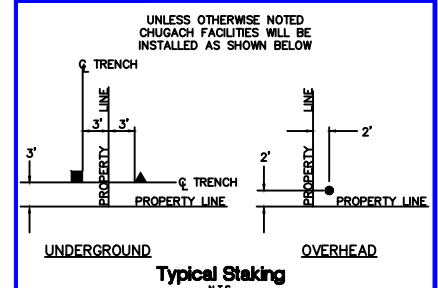
LOCATE CALL CENTER OF ALASKA (LCCA)	
ANCHORAGE AREA.....	278-3121
STATEWIDE.....	800-478-3121
AT&T ALSCOM INC.....	264-8465
ALASKA RAILROAD UTILITIES.....	265-2457
ALYESKA CABLE TV (GIRDWOOD).....	783-2982
KULIS AIR BASE.....	249-1499
MILITARY PETROLEUM FUEL LINES.....	552-2334
	OR 552-5342
STATE STORM DRAINS & STREET LIGHTS.....	333-2411

CONSTRUCTION LEGEND

NEW		EXISTING
	PADMOUNT TRANSFORMER	
	PEDESTAL	
	POWER POLE	
	STREET LIGHT	
	WARNING POST	
	1ø U.G. PRL. CONDUCTOR	
	3ø U.G. PRL. CONDUCTOR	
	U.G. SECONDARY CONDUCT.	
	U.G. STREET LIGHT CONDUCT.	
	1ø O.H. CONDUCTOR	
	3ø O.H. CONDUCTOR	
	JUNCTION BOX	
	SPLICE POINT	
	SPARE CONDUIT	
	CONDUIT W/ CONDUCTOR	
	SWITCH CABINET	

R.O.W. LEGEND

— — — — —	R.O.W. LINE
=====	CENTERLINE OF TRENCH

[illegible]

ENG. STAMP

CHUGACH
POWERING ALASKA'S FUTURE

Chugach Electric Association, Inc.
5601 Minnesota Drive - P.O. Box 196300
Anchorage, Alaska 99519-6300

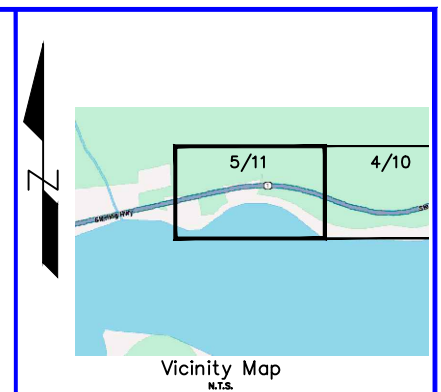
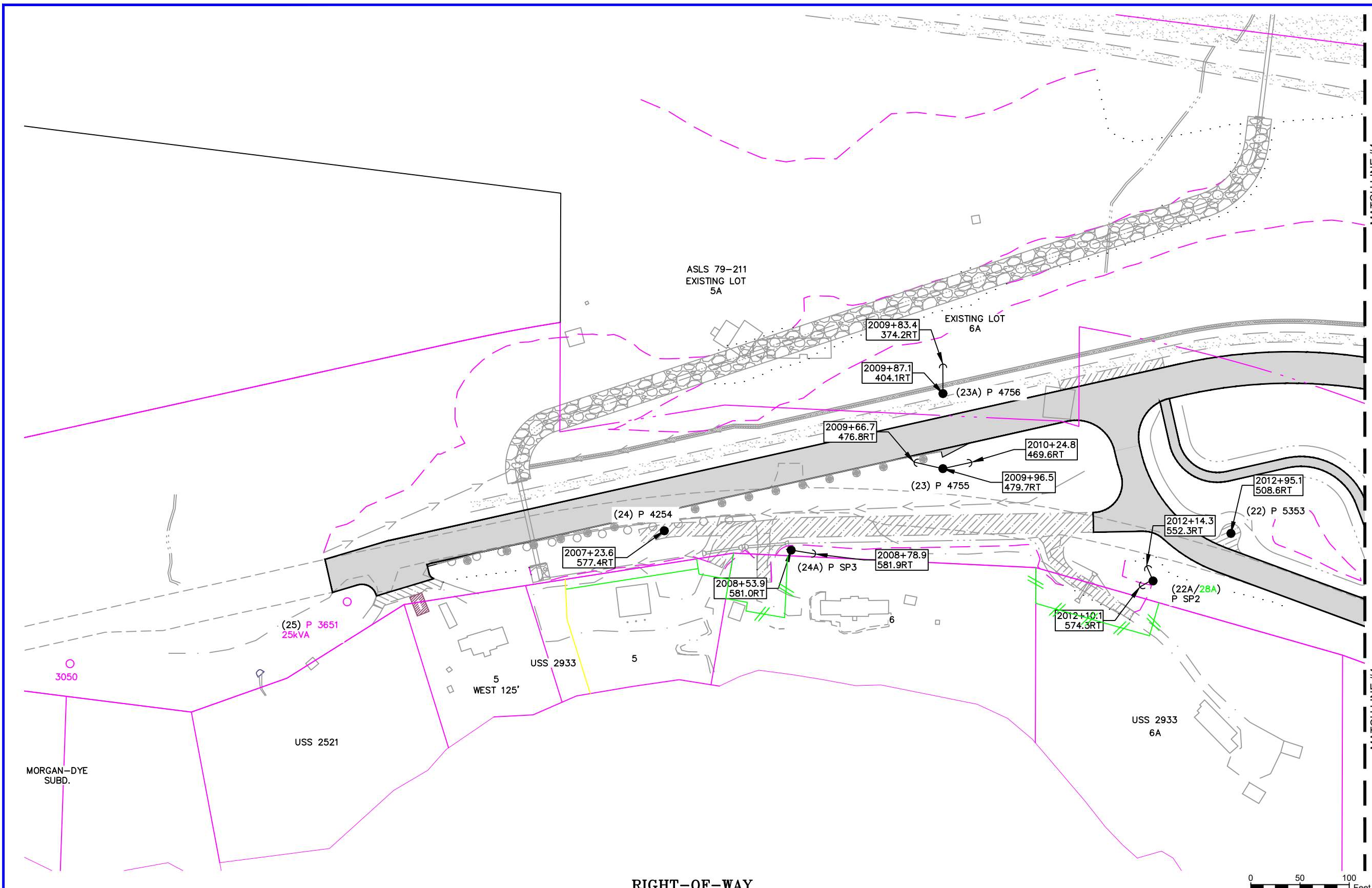
DRAWING NAME:

STATE OF ALASKA - STERLING HIGHWAY
RELOCATION STERLING HIGHWAY 45-60
GRID: C007, C008 MAP: SEC. 26, 27 OF T5N, R3W S.M.
FEEDER: DAVES CREEK 352
RIGHT-OF-WAY

W.O. NO.:
C.W.P. REF. NO.:

E1913921

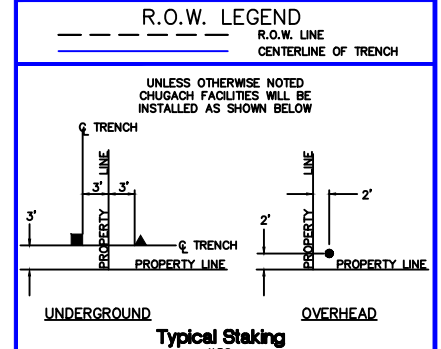
9 OF 15



CONDUCTOR DATA			
Manuf.	Manuf. Date	Manuf.	Manuf. Date
Volt Rating	Volt Rating	Insul. Type	Insul. Type
Insul. Size	Insul. Size	Cond. Size/Type	Cond. Size/Type
Quantity in Feet	Quantity in Feet	Quantity in Feet	Quantity in Feet

CALL BEFORE YOU DIG!	
LOCATE CALL CENTER OF ALASKA (LCCA)	
ANCHORAGE AREA	278-3121
STATEWIDE	800-478-3121
AT&T ALASCOM INC.	284-8465
ALASKA RAILROAD UTILITIES	265-2457
ALYESKA CABLE TV (GIRDWOOD)	783-2982
KULIS AIR BASE	249-1499
MILITARY PETROLEUM FUEL LINES	552-2334
	OR 552-5342
STATE STORM DRAINS & STREET LIGHTS	333-2411

CONSTRUCTION LEGEND	
NEW	EXISTING



PROJECT: STATE OF ALASKA - STERLING HIGHWAY MP 45-60 RELOCATION				
DESIGNER/PROJECT ENGINEER: M. ELLIOTT				
W.O. #: E1913921				
NO.	DESIGN/CONSTRUCTION/ASBUILT REVISION	DWN BY/DATE	REVIEWED (MGR/SUPV)/DATE	APPROVED (DIRECTOR)/DATE
0	ISSUED FOR CONSTRUCTION	ME 01/08/26	1/9/26	

ENG. STAMP

POWERING ALASKA'S FUTURE

Chugach Electric Association, Inc.
5601 Minnesota Drive - P.O. Box 196300
Anchorage, Alaska 99519-6300

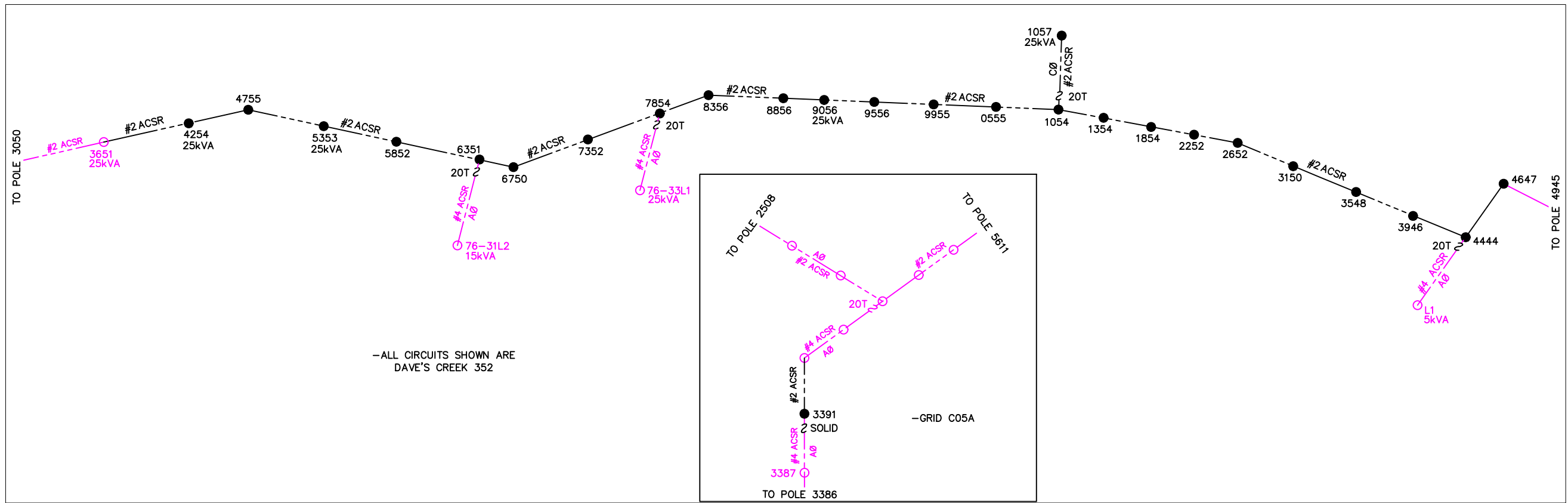
DRAWING NAME:

STATE OF ALASKA - STERLING HIGHWAY
RELOCATION STERLING HIGHWAY 45-60
GRID: C007, C008 MAP: SEC. 26, 27 OF T5N, R3W S.M.
FEEDER: DAVES CREEK 352
RIGHT-OF-WAY

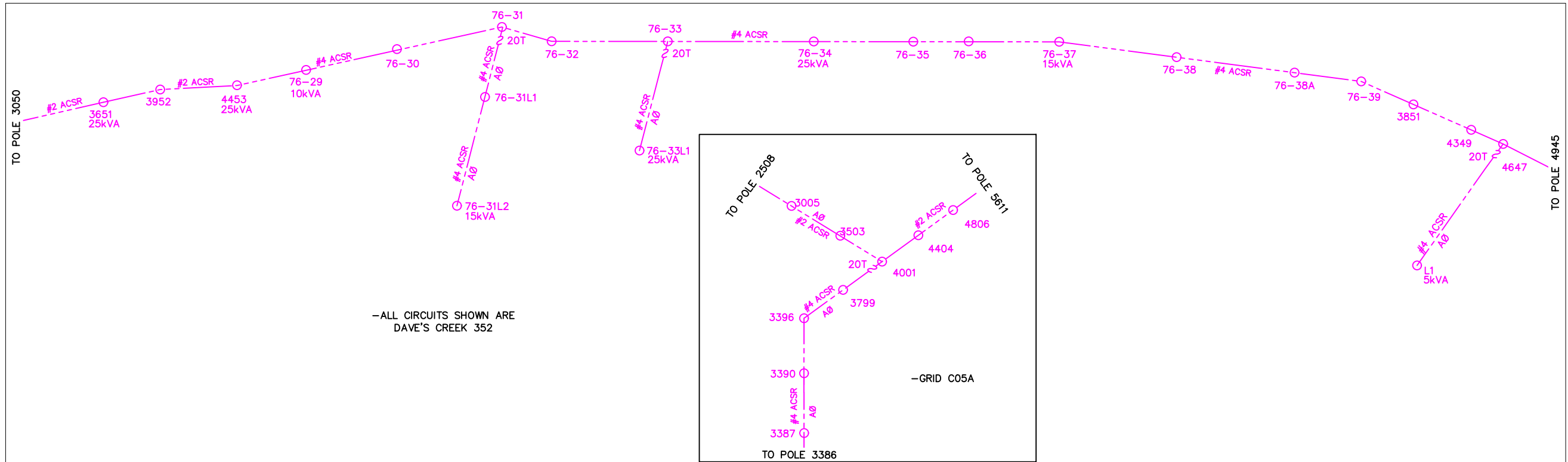
W.O. NO.:
C.W.P. REF. NO.:

E1913921

SHEET 11 OF 15



NEW PRIMARY CIRCUIT DIAGRAM



EXISTING PRIMARY CIRCUIT DIAGRAM



Vicinity Map

CONDUCTOR DATA

Manuf.	Manuf.
Manuf. Date	Manuf. Date
Volt Rating	Volt Rating
Insul. Type	Insul. Type
Insul. Size	Insul. Size
Cond. Size/Type	Cond. Size/Type
Quantity in Feet	Quantity in Feet

CALL BEFORE YOU DIG!

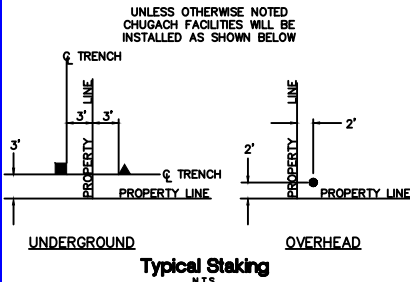
LOCATE CALL CENTER OF ALASKA (LCCA)
ANCHORAGE AREA..... 278-3121
STATEWIDE..... 800-478-3121
AT&T ALASCOM INC..... 284-8465
ALASKA RAILROAD UTILITIES..... 265-2457
ALYESKA CABLE TV (GIRDWOOD)..... 783-2982
KULIS AIR BASE..... 249-1499
MILITARY PETROLEUM FUEL LINES..... 552-2334
OR 552-5342
STATE STORM DRAINS & STREET LIGHTS..... 333-2411

CONSTRUCTION LEGEND

NEW	EXISTING

R.O.W. LEGEND

	R.O.W. LINE
	CENTERLINE OF TRENCH



PROJECT: STATE OF ALASKA - STERLING HIGHWAY MP 45-60 RELOCATION				
DESIGNER/PROJECT ENGINEER: M. ELLIOTT				
W.O. #: E1913921				
NO.	DESIGN/CONSTRUCTION/ASBUILT REVISION	DWN BY/DATE	REVIEWED (MGR/SUPV)/DATE	APPROVED (DIRECTOR)/DATE
0	ISSUED FOR CONSTRUCTION	ME 01/08/26	1/9/26	

ENG. STAMP



Chugach Electric Association, Inc.
5601 Minnesota Drive - P.O. Box 196300
Anchorage, Alaska 99519-6300

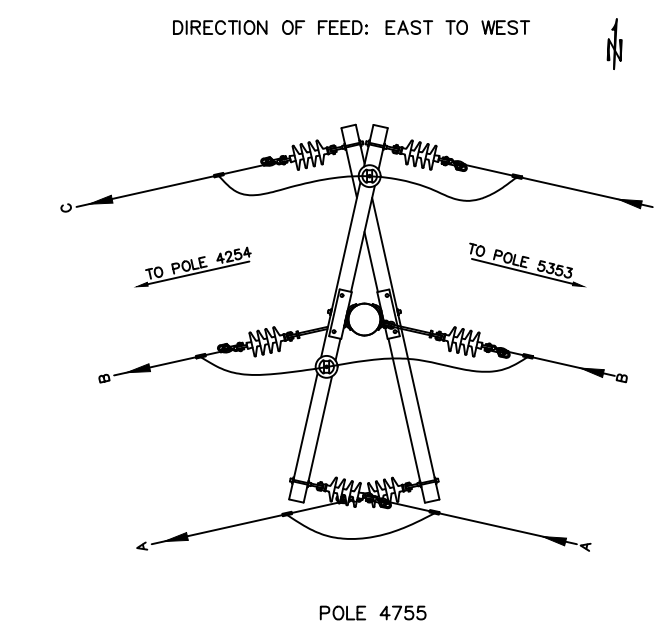
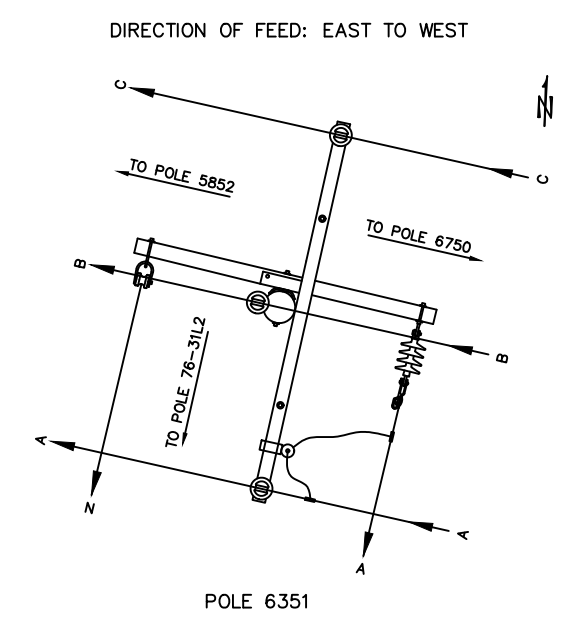
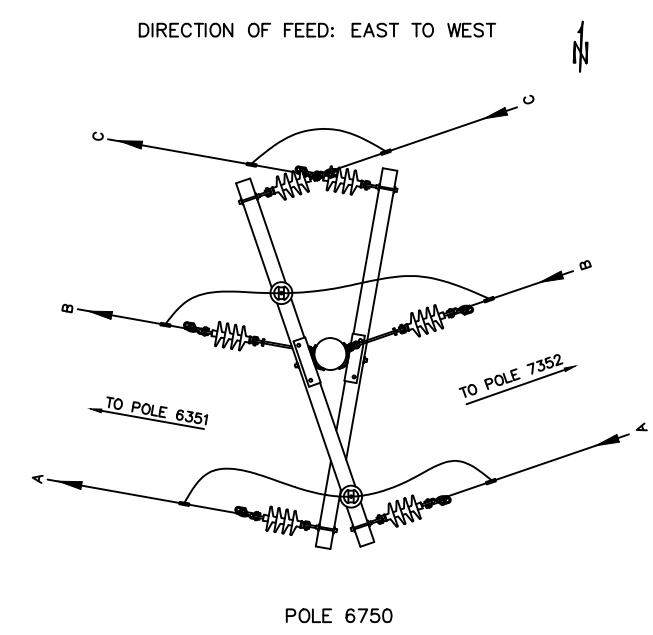
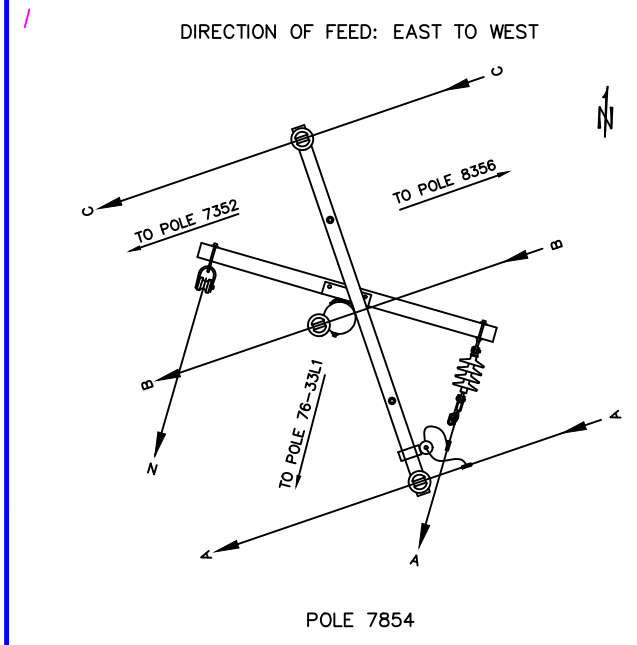
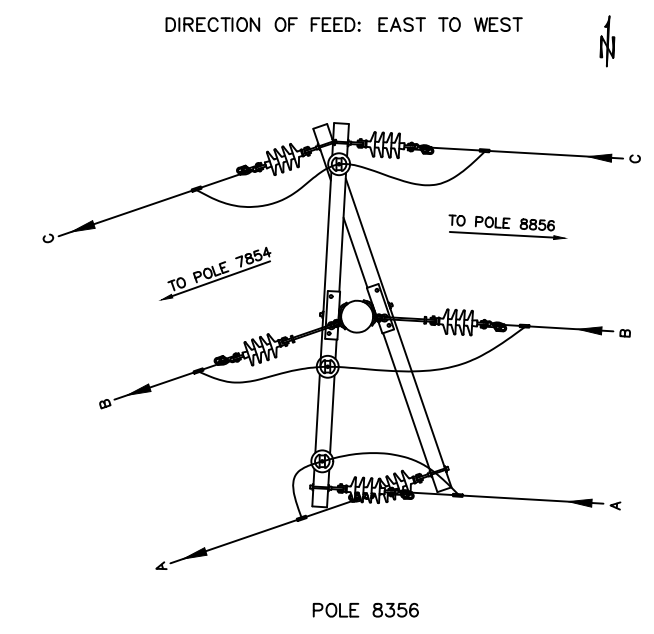
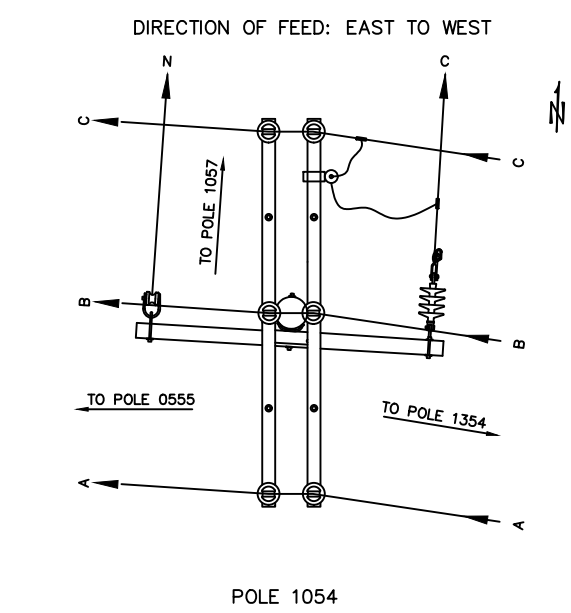
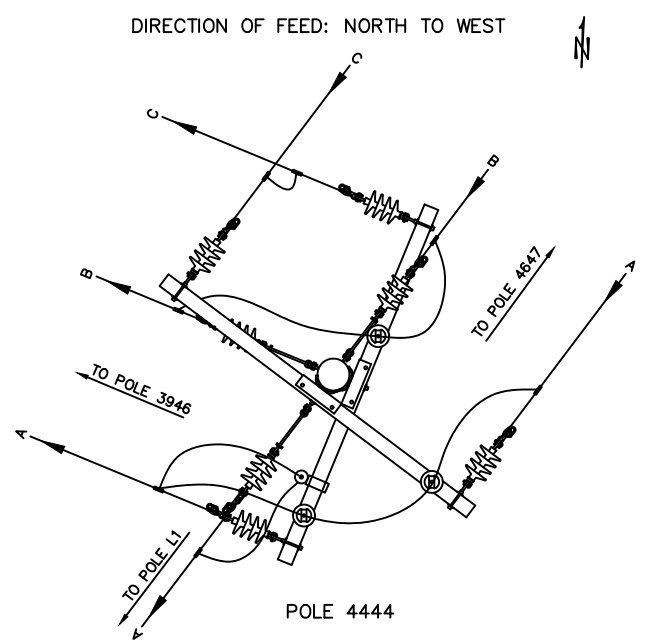
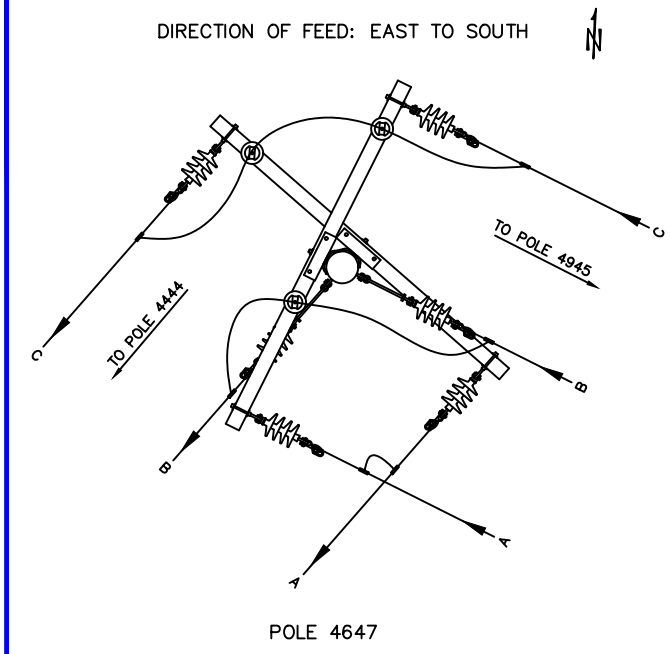
DRAWING NAME:

STATE OF ALASKA - STERLING HIGHWAY
RELOCATION STERLING HIGHWAY 45-60
GRID: C007, C008 MAP: SEC. 26, 27 OF T5N, R3W S.M.
FEEDER: DAVES CREEK 352
PRIMARY CIRCUIT DIAGRAM

W.O. NO.:
C.W.P. REF. NO.:

E1913921

SHEET 12 OF 15



Vicinity Map
N.T.S.

CONDUCTOR DATA			
Manuf.	Manuf.	Manuf.	Manuf.
Manuf. Date	Manuf. Date	Manuf. Date	Manuf. Date
Volt Rating	Volt Rating	Volt Rating	Volt Rating
Insul. Type	Insul. Type	Insul. Type	Insul. Type
Insul. Size	Insul. Size	Insul. Size	Insul. Size
Cond. Size/Type	Cond. Size/Type	Cond. Size/Type	Cond. Size/Type
Quantity in Feet	Quantity in Feet	Quantity in Feet	Quantity in Feet

CALL BEFORE YOU DIG!

LOCATE CALL CENTER OF ALASKA (LCCA)

ANCHORAGE AREA..... 278-3121

STATEWIDE..... 800-478-3121

AT&T ALASCOM INC..... 284-8465

ALASKA RAILROAD UTILITIES..... 265-2457

ALYKSA CABLE TV (GIRDWOOD)..... 783-2982

KULIS AIR BASE..... 249-1499

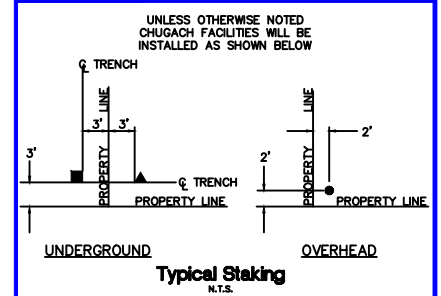
MILITARY PETROLEUM FUEL LINES..... 552-2334

OR 552-5342

STATE STORM DRAINS & STREET LIGHTS..... 333-2411

CONSTRUCTION LEGEND	
NEW	EXISTING

R.O.W. LEGEND	
	R.O.W. LINE
	CENTERLINE OF TRENCH



JUMPER DETAILS

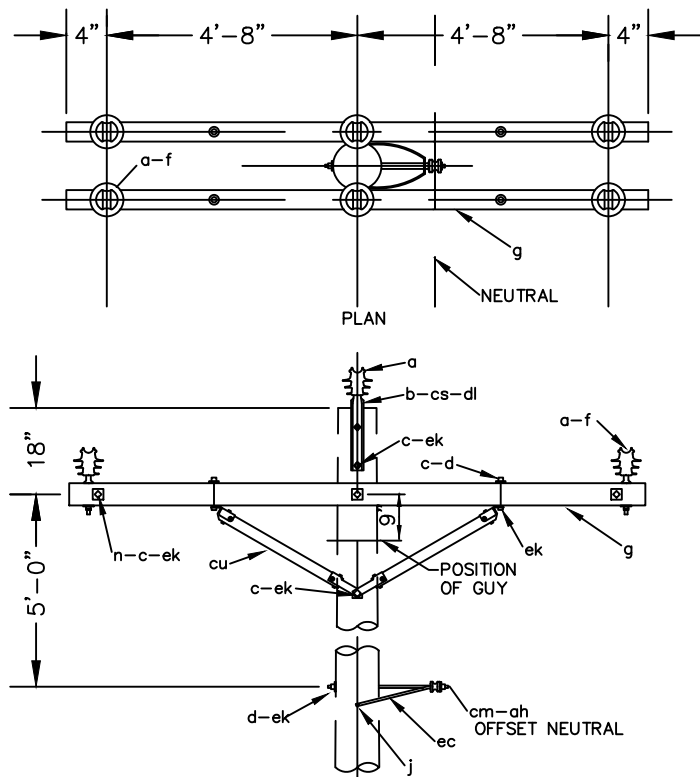
PROJECT: STATE OF ALASKA - STERLING HIGHWAY MP 45-60 RELOCATION				
DESIGNER/PROJECT ENGINEER: M. ELLIOTT			W.O. #: E1913921	
NO.	DESIGN/CONSTRUCTION/ASBUILT REVISION	DWN BY/DATE	REVIEWED (MGR/SUPV)/DATE	APPROVED (DIRECTOR)/DATE
0	ISSUED FOR CONSTRUCTION	ME 12/17/25	1/9/26	

ENG. STAMP



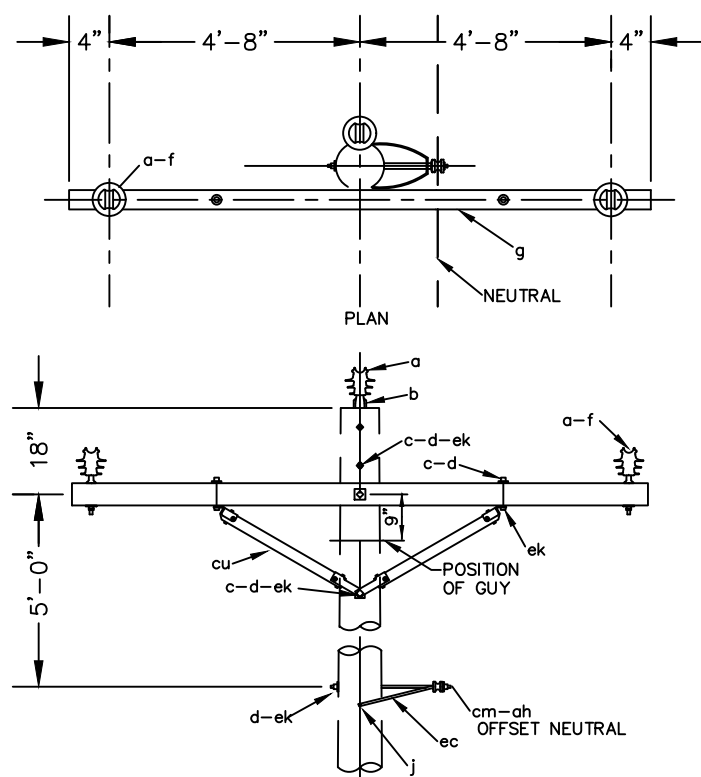
Chugach Electric Association, Inc.
5601 Minnesota Drive - P.O. Box 196300
Anchorage, Alaska 99519-6300

DRAWING NAME:	STATE OF ALASKA - STERLING HIGHWAY RELOCATION STERLING HIGHWAY 45-60 GRID: C007, C008 MAP: SEC. 26, 27 OF T5N, R3W S.M. FEEDER: DAVES CREEK 352 DETAIL DIAGRAMS
W.O. NO:	E1913921
C.W.P. REF. NO:	
SHEET	13 OF 15



MATERIAL LIST		
NO.	Qty.	DESCRIPTION
a	6	INSULATOR, PIN TYPE, VISE TOP, 35KV, 1-3/8" THREAD, ANSI 55-7, PREFORMED# IP-35-VTN2 OR HENDRIX# HPI-35VT-02
cm	1	INSULATOR, SPOOL, 3", 1-3/4" NECK, ANSI 53-2 PREFORMED LINE PRODUCTS PART# IP-53-2
ah	1	TIE, WRAPLOCK, SPOOL, PREFORMED LINE PRODUCTS PART# SPL-1354-P, NO SUB.
b	2	PIN, POLE TOP, 20", 1-3/8" THREAD, CHANCE PART #SA2195
cs	2	BRACKET, POLE TOP, (SPACER BRACKET), CHANCE PART #2157
f	4	PIN, CROSSARM, STEEL, 7", 1-3/8" THREAD, CHANCE PART #4717P
g	2	CROSSARM, 3-5/8" x 4-5/8" x 10'-0"
cu	4	BRACE, WOOD, 60" SPAN, 18" DROP, HUGHES BROTHERS PART #2045-CC30-9-11
ec	1	BRACKET, OFFSET NEUTRAL, CHANCE PART #C2060004
c	3	BOLT, MACHINE, 5/8" x REQ'D LENGTH
n	3	BOLT, DOUBLE ARMING, 5/8" x REQ'D LENGTH
d	10	WASHER, 2-1/4" SQUARE WITH 11/16" HOLE
c	4	BOLT, MACHINE, 1/2" x 6"
d	4	WASHER, 1-3/8" ROUND WITH 9/16" HOLE
ek	-	LOCKNUTS, AS REQUIRED
j	2	SCREW, LAG, 1/2" x 4-1/2"

SVC2R



MATERIAL LIST		
NO.	Qty.	DESCRIPTION
a	3	INSULATOR, PIN TYPE, VISE TOP, 35KV, 1-3/8" THREAD, ANSI 55-7, PREFORMED# IP-35-VTN2 OR HENDRIX# HPI-35VT-02
cm	1	INSULATOR, SPOOL, 3", 1-3/4" NECK, ANSI 53-2 PREFORMED LINE PRODUCTS PART# IP-53-2
ah	1	TIE, WRAPLOCK, SPOOL, PREFORMED LINE PRODUCTS PART# SPL-1354-P, NO SUB.
b	1	PIN, POLE TOP, 20", 1-3/8" THREAD, CHANCE PART #SA2195
f	2	PIN, CROSSARM, STEEL, 7", 1-3/8" THREAD, CHANCE PART #4717P
g	1	CROSSARM, 3-5/8" x 4-5/8" x 10'-0"
cu	2	BRACE, WOOD, 60" SPAN, 18" DROP, HUGHES BROTHERS PART #2045-CC30-9-11
ec	1	BRACKET, OFFSET NEUTRAL, CHANCE PART #C2060004
c	4	BOLT, MACHINE, 5/8" x REQ'D LENGTH
d	5	WASHER, 2-1/4" SQUARE WITH 11/16" HOLE
c	2	BOLT, MACHINE, 1/2" x 6"
d	2	WASHER, 1-3/8" ROUND WITH 9/16" HOLE
ek	-	LOCKNUTS, AS REQUIRED
j	2	SCREW, LAG, 1/2" x 4-1/2"

SVC1RA

FRAMING DETAILS

Vicinity Map
N.T.S.

CONDUCTOR DATA

Manuf. _____	Manuf. _____
Volt Rating _____	Volt Rating _____
Insul. Type _____	Insul. Type _____
Insul. Size _____	Insul. Size _____
Cond. Size/Type _____	Cond. Size/Type _____
Quantity in Feet _____	Quantity in Feet _____

CALL BEFORE YOU DIG!

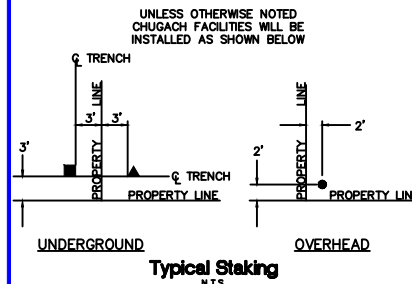
LOCATE CALL CENTER OF ALASKA (LCCA)	
ANCHORAGE AREA.....	278-3121
STATEWIDE.....	800-478-3121
AT&T ALASCOM INC.....	284-8465
ALASKA RAILROAD UTILITIES.....	265-2457
ALYESKA CABLE TV (GIRDWOOD).....	783-2982
KULIS AIR BASE.....	249-1499
MILITARY PETROLEUM FUEL LINES.....	552-2334
	OR 552-5342
STATE STORM DRAINS & STREET LIGHTS.....	333-2411

CONSTRUCTION LEGEND

NEW	EXISTING

R.O.W. LEGEND

	R.O.W. LINE
	CENTERLINE OF TRENCH



PROJECT: STATE OF ALASKA - STERLING HIGHWAY MP 45-60 RELOCATION				
DESIGNER/PROJECT ENGINEER: M. ELLIOTT			W.O. #: E1913921	
NO.	DESIGN/CONSTRUCTION/ASBUILT REVISION	DWN BY/DATE	REVIEWED (MGR/SUPV)/DATE	APPROVED (DIRECTOR)/DATE
0	ISSUED FOR CONSTRUCTION	ME 12/17/25	JM 1/9/26	

ENG. STAMP

CHUGACH
POWERING ALASKA'S FUTURE

Chugach Electric Association, Inc.
5601 Minnesota Drive - P.O. Box 196300
Anchorage, Alaska 99519-6300

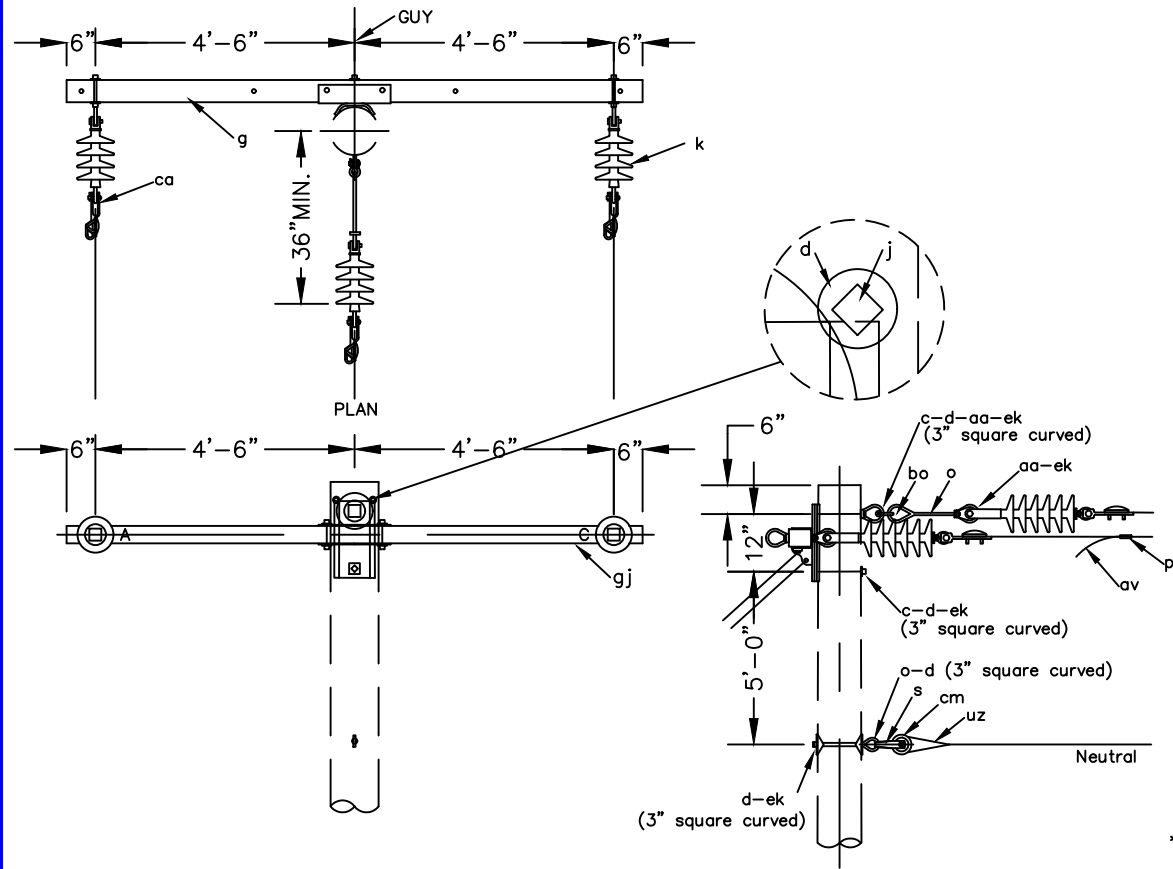
DRAWING NAME:

STATE OF ALASKA - STERLING HIGHWAY
RELOCATION STERLING HIGHWAY 45-60
GRID: C007, C008 MAP: SEC. 26, 27 OF T5N, R3W S.M.
FEEDER: DAVES CREEK 352
DETAIL DIAGRAMS

W.O. NO.:
C.W.P. REF. NO.:

E1913921

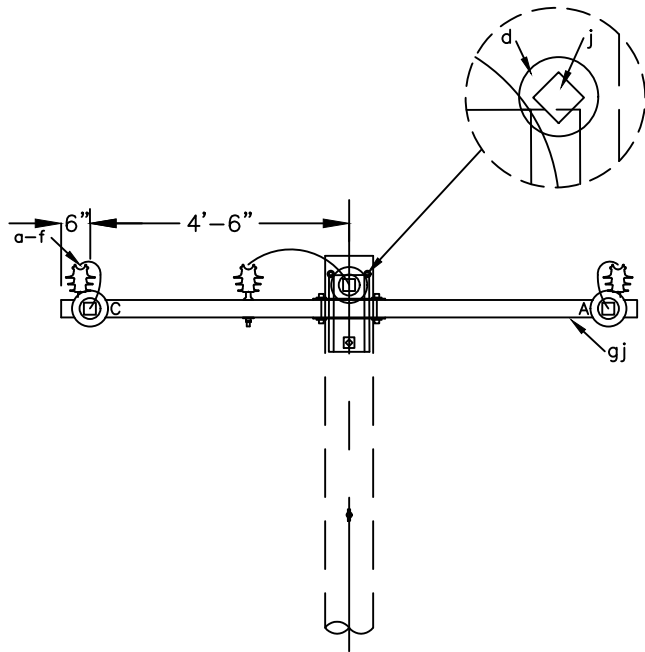
SHEET 14 OF 15



- NOTES:
- THIS ASSEMBLY USES: 3" SQUARE CURVED WASHERS (4 REQUIRED).
 - WHERE UTILIZED AS BUCK ARM, INSTALL 3'-6" BELOW LINE CROSSARM (CROSSARM TO CROSSARM SPACING), OR AT HEIGHT SHOWN PN DRAWINGS OR STAKING SHEETS.

MATERIAL LIST		
Item	NO.	DESCRIPTION
gj	1	CROSSARM ASSEMBLY, PUPU FIBERGLASS, #DA2500120E2B9X2
c	2	BOLT, MACHINE, 3/4" x REQUIRED LENGTH
d	2	WASHER, 3" SQUARE, CURVED (13/16" HOLE)
aa	1	NUT, EYE, 3/4"
o	2	BOLT, EYE, 5/8" x REQUIRED LENGTH
d	2	WASHER, 3" SQUARE, CURVED (11/16" HOLE)
aa	1	NUT, EYE, 5/8"
bo	1	SHACKLE, ANCHOR
k	3	INSULATOR, EPOXILATOR, SUSPENSION, 25 kV, 15,000 lb
ca	3	DEADEND, AUTOMATIC, SIDE-OPENING, #4 TO 2/0, HUBBELL PART# GDW420
cm	1	INSULATOR, SPOOL, 3", PREFORMED LINE PRODUCTS #IP-53-2, OR EQ.
s	1	CLEVIS, SWINGING, MACLEAN #J0322, OR EQUAL
uz	1	GRIP, DEADEND, #2 ACSR SPARATE, PREFORMED PART# DG4542, NO SUB.
ek	-	LOCKNUTS, AS REQUIRED
av	-	JUMPERS, #2 CU, HIGH MOLECULAR WEIGHT POLYETHYLENE COVERING, AS REQ'D
p	-	CONNECTORS, H-TAP, AS REQUIRED
j	2	SCREW, LAG, 1/2" x 4-1/2"
d	2	WASHER, 1-3/8" ROUND WITH 9/16" HOLE
ee	4	LETTERS, 3" TALL, ADHESIVE, 2 "A", "C"

XVC7F



- NOTES:
- INSTALL CROSSARM OPPOSITE: HIGHER TENSION SPAN, LONGER SPAN, OR UPHILL SPAN.
 - THIS ASSEMBLY: USES 3" SQUARE CURVED WASHERS (4 REQUIRED).
 - WHERE IN-LINE GUYS ARE CALLED FOR ON POLE, INSTALL NEUTRAL DA BOLT AT SMALL ANGLE TO PROVIDE CLEARANCE TO DOWN GUYS.
 - WHERE UTILIZED FOR A LINE ANGLE GREATER THAN 5°, ORIENT ALL EYE-NUTS HORIZONTALLY AND PROVIDE ANCHOR SHACKLES BETWEEN EYE-NUTS AND EPOXILATORS AT AØ AND CØ.

MATERIAL LIST		
Item	NO.	DESCRIPTION
gj	1	CROSSARM ASSEMBLY, PUPU FIBERGLASS, #DA2500120E2B9X2
n	1	BOLT, DOUBLE ARMING, 3/4" x REQUIRED LENGTH
c	1	BOLT, MACHINE, 3/4" x REQUIRED LENGTH
d	2	WASHER, 3" SQUARE, CURVED (13/16" HOLE)
aa	2	NUT, EYE, 3/4"
n	1	BOLT, DOUBLE ARMING, 5/8" x REQUIRED LENGTH
o	2	BOLT, EYE, 5/8" x REQUIRED LENGTH
d	2	WASHER, 3" SQUARE, CURVED (11/16" HOLE)
aa	4	NUT, EYE, 5/8"
bo	2	SHACKLE, ANCHOR, (6) REQUIRED AT LINE ANGLE -- SEE NOTE 4.
k	6	INSULATOR, EPOXILATOR, SUSPENSION, 25 kV, 15,000 lb
ca	6	DEADEND, AUTOMATIC, SIDE-OPENING, #4 TO 2/0, HUBBELL PART# GDW420
cm	2	INSULATOR, SPOOL, 3", PREFORMED LINE PRODUCTS #IP-53-2, OR EQ.
s	2	CLEVIS, SWINGING, MACLEAN #J0322, OR EQUAL
uz	2	GRIP, DEADEND, #2 ACSR SPARATE, PREFORMED PART# DG4542, NO SUB.
f	3	PIN, CROSSARM, STEEL, 7", 1-3/8" THREAD, CHANCE PART #4717P
a	3	INSULATOR, PIN TYPE, VISE TOP, 35kV, 1-3/8" THREAD, ANSI 55-7, PREFORMED# IP-35-VTN2 OR HENDRIX# HPI-35VT-02
ek	-	LOCKNUTS, AS REQUIRED
av	-	JUMPERS, #2 CU, HIGH MOLECULAR WEIGHT POLYETHYLENE COVERING, AS REQ'D
p	-	CONNECTORS, H-TAP, AS REQUIRED
j	2	SCREW, LAG, 1/2" x 4-1/2"
d	2	WASHER, 1-3/8" ROUND WITH 9/16" HOLE
ee	4	LETTERS, 3" TALL, ADHESIVE, 2 "A", "C"

XVC8F

FRAMING DETAILS

PROJECT: STATE OF ALASKA - STERLING HIGHWAY MP 45-60 RELOCATION				
DESIGNER/PROJECT ENGINEER: M. ELLIOTT <i>ME</i> W.O. #: E1913921				
NO.	DESIGN/CONSTRUCTION/ASBUILT REVISION	DWN BY/DATE	REVIEWED (MGR/SUPV)/DATE	APPROVED (DIRECTOR)/DATE
0	ISSUED FOR CONSTRUCTION	ME 12/17/25	<i>ME</i> 1/9/26	

ENG. STAMP

CHUGACH
POWERING ALASKA'S FUTURE

Chugach Electric Association, Inc.
5601 Minnesota Drive - P.O. Box 196300
Anchorage, Alaska 99519-6300

DRAWING NAME:

STATE OF ALASKA - STERLING HIGHWAY
RELOCATION STERLING HIGHWAY 45-60
GRID: C007, C008 MAP: SEC. 26, 27 OF T5N, R3W S.M.
FEEDER: DAVES CREEK 352
DETAIL DIAGRAMS

W.O. NO.:
C.W.P. REF. NO.:

E1913921

SHEET 15 OF 15

Vicinity Map
N.T.S.

CONDUCTOR DATA

Manuf. _____	Manuf. _____
Volt Rating _____	Volt Rating _____
Insul. Type _____	Insul. Type _____
Insul. Size _____	Insul. Size _____
Cond. Size/Type _____	Cond. Size/Type _____
Quantity in Feet _____	Quantity in Feet _____
Manuf. _____	Manuf. _____
Volt Rating _____	Volt Rating _____
Insul. Type _____	Insul. Type _____
Insul. Size _____	Insul. Size _____
Cond. Size/Type _____	Cond. Size/Type _____
Quantity in Feet _____	Quantity in Feet _____

CALL BEFORE YOU DIG!

LOCATE CALL CENTER OF ALASKA (LCCA)
ANCHORAGE AREA..... 278-3121
STATEWIDE..... 800-478-3121
AT&T ALASCOM INC..... 284-8465
ALASKA RAILROAD UTILITIES..... 265-2457
ALYESKA CABLE TV (GIRDWOOD)..... 783-2982
KULIS AIR BASE..... 249-1499
MILITARY PETROLEUM FUEL LINES..... 552-2334
OR 552-5342
STATE STORM DRAINS & STREET LIGHTS..... 333-2411

CONSTRUCTION LEGEND

NEW	EXISTING

R.O.W. LEGEND

	R.O.W. LINE
	CENTERLINE OF TRENCH

