

POLE CONTACT RECORD		
LOCATION	ATU	CATV

INITIAL/DATE: \_\_\_\_\_

**Vicinity Map**  
N.T.S.

**CONDUCTOR DATA**

Manuf.	Manuf.	Manuf.	Manuf.
Manuf. Date	Manuf. Date	Manuf. Date	Manuf. Date
Volt Rating	Volt Rating	Volt Rating	Volt Rating
Insul. Type	Insul. Type	Insul. Type	Insul. Type
Insul. Size	Insul. Size	Insul. Size	Insul. Size
Cond. Size/Type	Cond. Size/Type	Cond. Size/Type	Cond. Size/Type
Quantity in Feet	Quantity in Feet	Quantity in Feet	Quantity in Feet

**CALL BEFORE YOU DIG!**

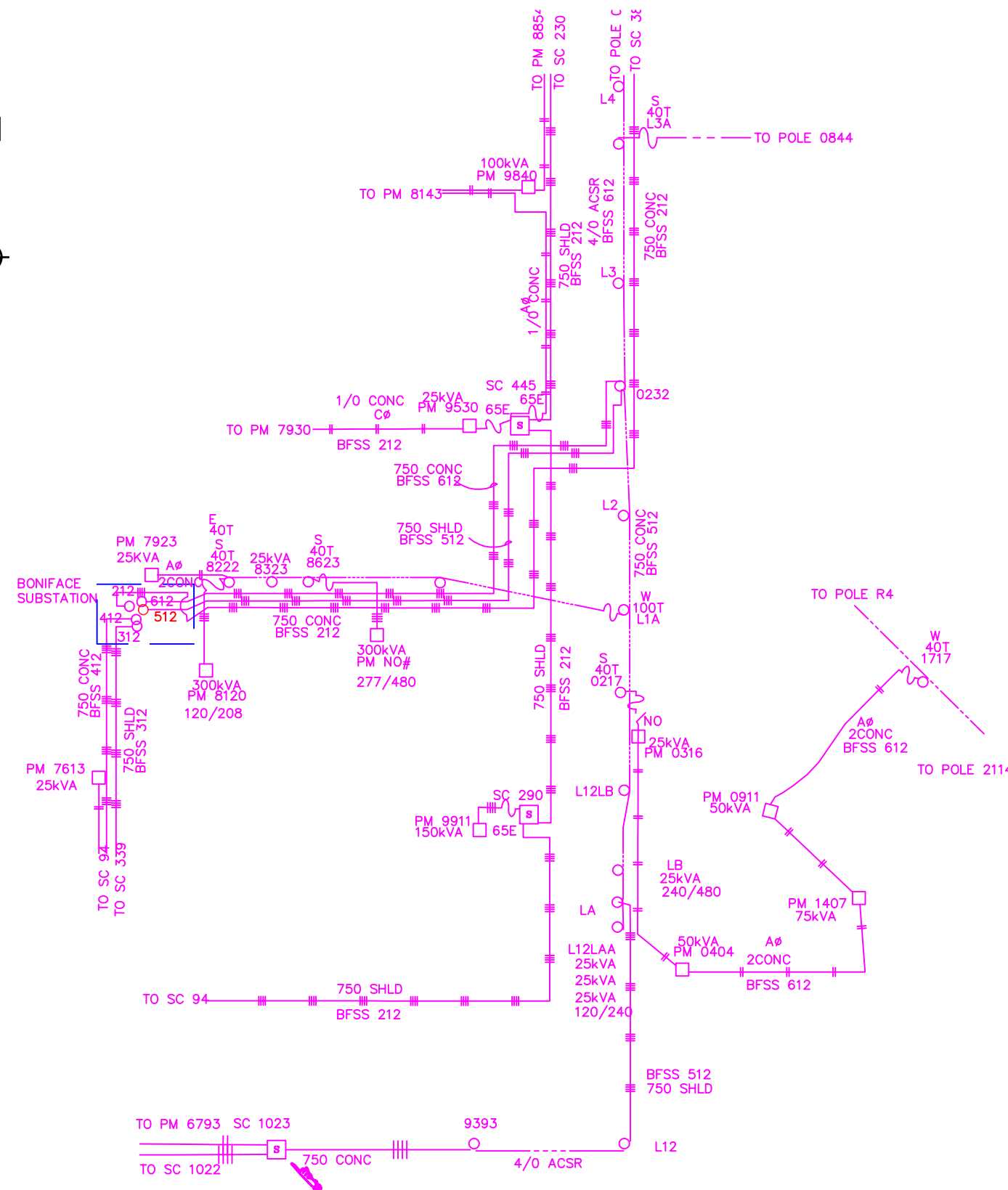
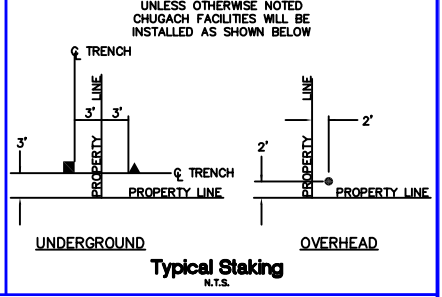
LOCATE CALL CENTER OF ALASKA (LCCA)  
ANCHORAGE AREA..... 278-3121  
STATEWIDE..... 800-478-3121  
AT&T ALASCOM INC..... 264-8465  
ALASKA RAILROAD UTILITIES..... 265-2457  
ALYESKA CABLE TV (GRDWOOD)..... 783-2982  
KULIS AIR BASE..... 249-1499  
MILITARY PETROLEUM FUEL LINES..... 552-2334  
OR 552-5342  
STATE STORM DRAINS & STREET LIGHTS..... 333-2411

**CONSTRUCTION LEGEND**

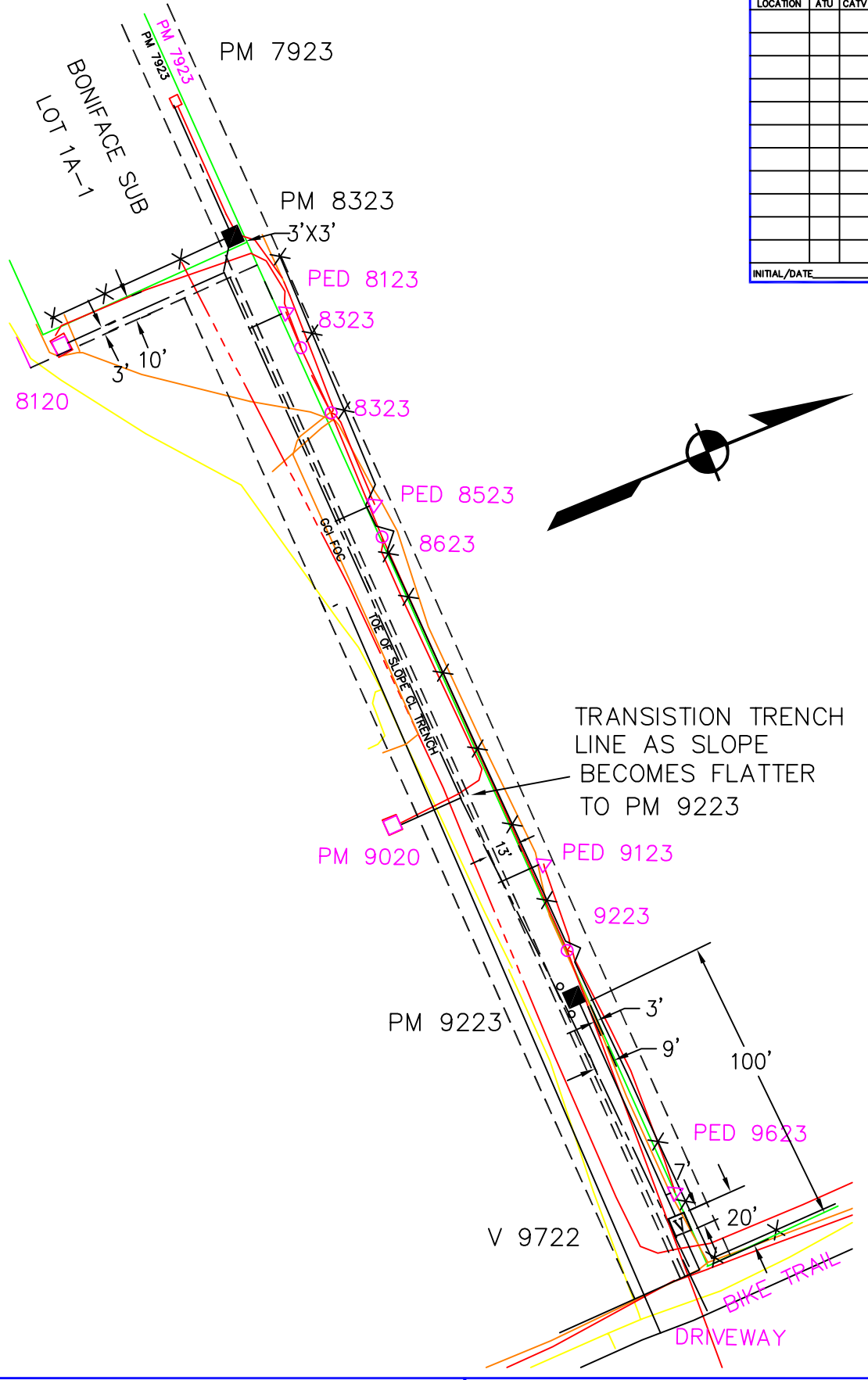
NEW		EXISTING	
[Symbol]	PADMOUNT TRANSFORMER	[Symbol]	PEDESTAL
[Symbol]	POWER POLE	[Symbol]	STREET LIGHT
[Symbol]	WARNING POST	[Symbol]	WARNING POST
[Symbol]	1# U.G. PRI. CONDUCTOR	[Symbol]	3# U.G. PRI. CONDUCTOR
[Symbol]	U.G. SECONDARY CONDUCT.	[Symbol]	U.G. STREET LIGHT CONDUCT.
[Symbol]	1# O.H. CONDUCTOR	[Symbol]	3# O.H. CONDUCTOR
[Symbol]	JUNCTION BOX	[Symbol]	JUNCTION BOX
[Symbol]	SPLICE POINT	[Symbol]	SPLICE POINT
[Symbol]	SPARE CONDUIT	[Symbol]	SPARE CONDUIT
[Symbol]	CONDUIT W/ CONDUCTOR	[Symbol]	CONDUIT W/ CONDUCTOR
[Symbol]	SWITCH CABINET	[Symbol]	SWITCH CABINET

**R.O.W. LEGEND**

R.O.W. LINE  
CENTERLINE OF TRENCH



**EXISTING PRIMARY CIRCUIT DIAGRAM**  
NTS



TRANSITION TRENCH LINE AS SLOPE BECOMES FLATTER TO PM 9223

PROJECT: PATTERSON AT EAST TUDOR - OVERHEAD TO UNDERGROUND  
DESIGNER/PROJECT ENGINEER: SMATTSON

NO.	DESIGN/CONSTRUCTION/ASBUILT REVISION	DWN BY/DATE	REVIEWED (MGR/SUPV)/DATE	APPROVED (DIRECTOR)/DATE
0	ISSUED FOR CONSTRUCTION	6/3/20	4/25/23	

W.O. #: E1813854

ENG. STAMP

Chugach Electric Association, Inc.  
5601 Electron Drive - P.O. Box 196300  
Anchorage, Alaska 99519-6300

DRAWING NAME: PATTERSON AT EAST TUDOR OVERHEAD TO UNDERGROUND  
GRIDS: 1740  
FEEDER: BFSS 612

W.O. NO.: E1813854  
C.W.P. REF. NO.: E1813854

J:\DESIGN\E1813854\PCD.DWG  
SHEET \_\_\_ OF \_\_\_

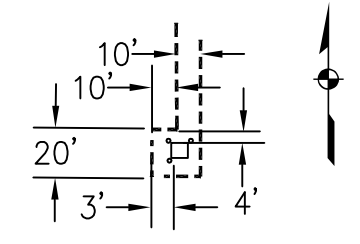
POLE CONTACT RECORD		
LOCATION	ATU	CATV

**Vicinity Map**  
N.T.S.

**CONDUCTOR DATA**

Manuf.	Manuf. Date	Manuf.	Manuf. Date

INITIAL/DATE



DETAIL ROW SC 1138

**CALL BEFORE YOU DIG!**

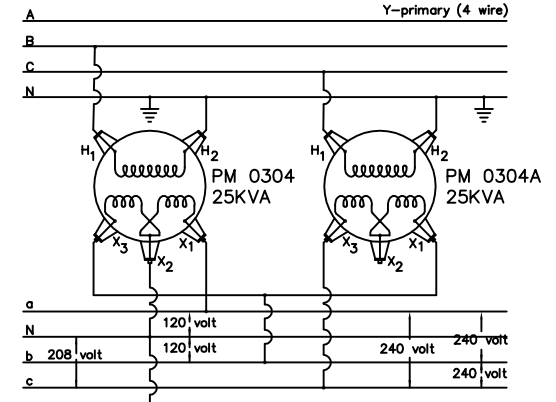
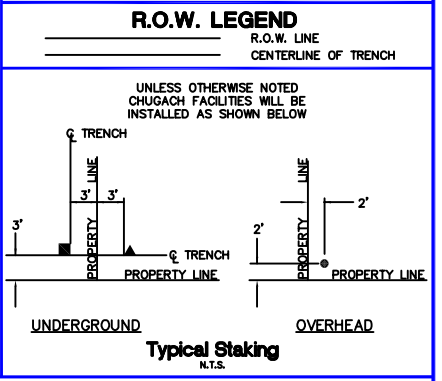
LOCATE CALL CENTER OF ALASKA (LCCA)

ANCHORAGE AREA..... 278-3121  
STATEWIDE..... 800-478-3121

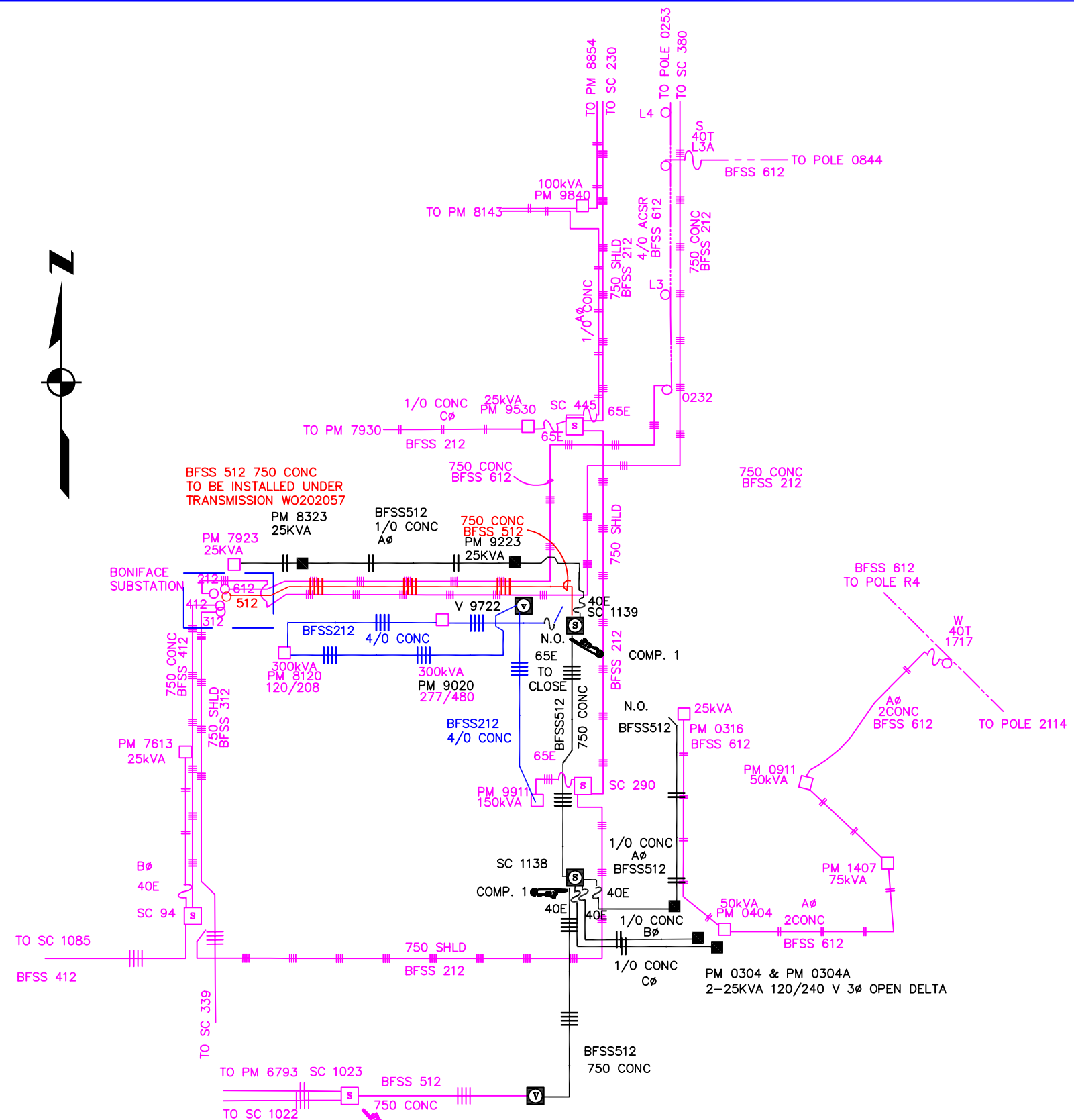
AT&T ALASCOM INC..... 264-8465  
ALASKA RAILROAD UTILITIES..... 265-2457  
ALYESKA CABLE TV (GIRDWOOD)..... 783-2982  
KULIS AIR BASE..... 249-1499  
MILITARY PETROLEUM FUEL LINES..... 552-2334 OR 552-5342  
STATE STORM DRAINS & STREET LIGHTS..... 333-2411

**CONSTRUCTION LEGEND**

NEW	EXISTING



CONNECTION DETAIL FOR PM 0304 & PM 0304A  
NTS



NEW PRIMARY CIRCUIT DIAGRAM  
NTS

PROJECT: PATTERSON AT EAST TUDOR - OVERHEAD TO UNDERGROUND				
DESIGNER/PROJECT ENGINEER: SMATTSON				
NO.		DESIGN/CONSTRUCTION/ASBUILT REVISION		W.O. #: E1813854
0	ISSUED FOR CONSTRUCTION	DWN BY/DATE	REVIEWED (MGR/SUPV)/DATE	APPROVED (DIRECTOR)/DATE
		6/3/20	4/25/23	

ENG. STAMP



Chugach Electric Association, Inc.  
5601 Electron Drive - P.O. Box 196300  
Anchorage, Alaska 99519-6300

DRAWING NAME: PATTERSON AT EAST TUDOR OVERHEAD TO UNDERGROUND

GRIDS: 1740

FEEDER: BFSS 612

W.O. NO.: E1813854

C.W.P. REF. NO.:

J: \DESIGN\E18\13854

SHEET \_\_\_\_\_ OF \_\_\_\_\_