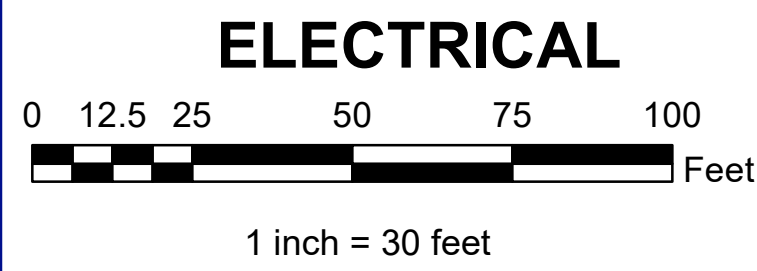


1/0 CONC IN 1-4" HDPE
 NTO VAULT 9722 ON TO PM 9911
 ALL IS 1/0 CONC IN 2" HDPE
 / IS 4/0 RIBB IN 2" HDPE
 OTHERWISE NOTED

24"C-
 3=6"
 5=4"

TUDOR ROAD



PROJECT: 3Ø OH TO UG PATTERSON ST AT INTERSECTION OF TUDOR ROAD				
ENGINEER / SMATTSON <i>SM</i>		W.O. # 355 E1813854		
NO.	DESIGN / CONSTRUCTION / ASBUILT REVISION	DWN. BY / DATE	REVIEWED MGR./SUPV./ DATE	APPROVED DIRECTOR / DATE
0	ISSUED FOR CONSTRUCTION	6/24/20	<i>SM</i> 4/25/23	

ENGINEERING STAMP



Chugach Electric Association, Inc.
 5601 Electron Drive - P.O. Box 196300
 Anchorage, Alaska 99519-6300

DRAWING NAME: E1813854
 PATTERSON STREET 3Ø OH TO UG AT E. TUDOR INTERSECTION

GRID: 1739,1740,1839,1840
 MAP: 1303-26D,1303-25C,1303-35A,1303-36B
 FEEDER: BFSS 512

W.O. NUMBER: 355 **E1813854** **SHT.** of

POLE CONTACT RECORD			Manuf.
LOCATION	TEL	CATV	Manuf. Date
			Volt Rating
			Insul. Type
			Insul. Size
			Cond. Size/Type
			Quantity in Feet
			Manuf. Date
			Volt Rating
			Insul. Type
			Insul. Size
			Cond. Size/Type
			Quantity in Feet
			Manuf. Date
			Volt Rating
			Insul. Type
			Insul. Size
			Cond. Size/Type
			Quantity in Feet
			Manuf. Date
			Volt Rating
			Insul. Type
			Insul. Size
			Cond. Size/Type
			Quantity in Feet

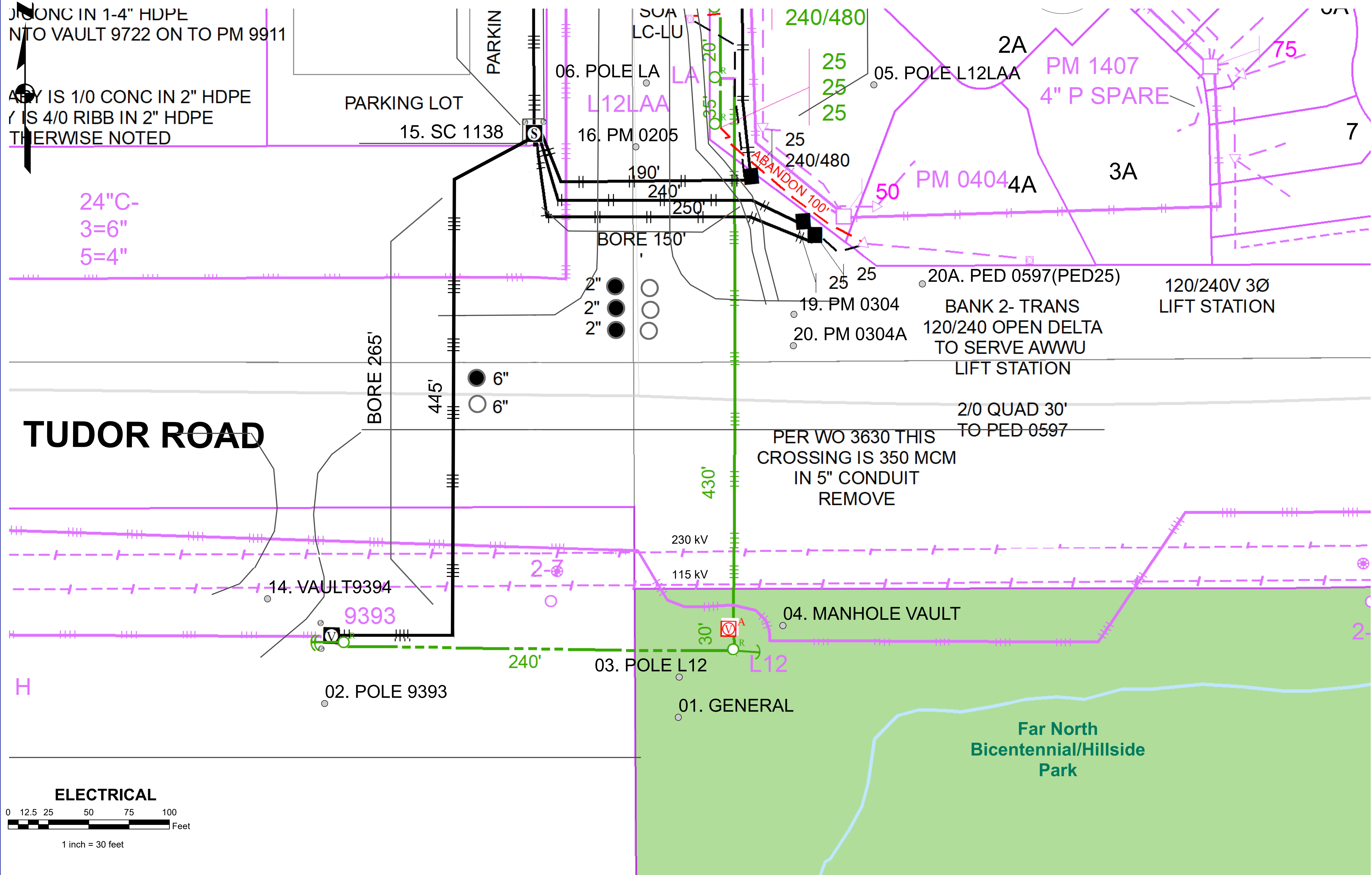
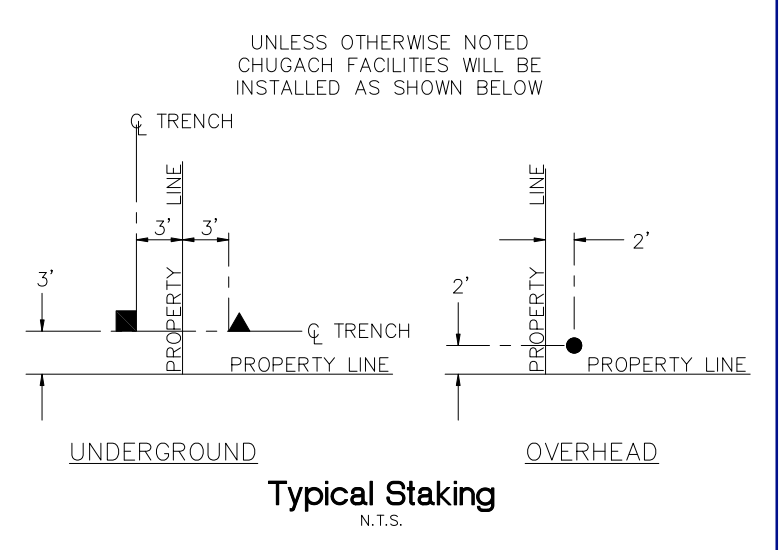
INITIAL/DATE

CALL BEFORE YOU DIG!

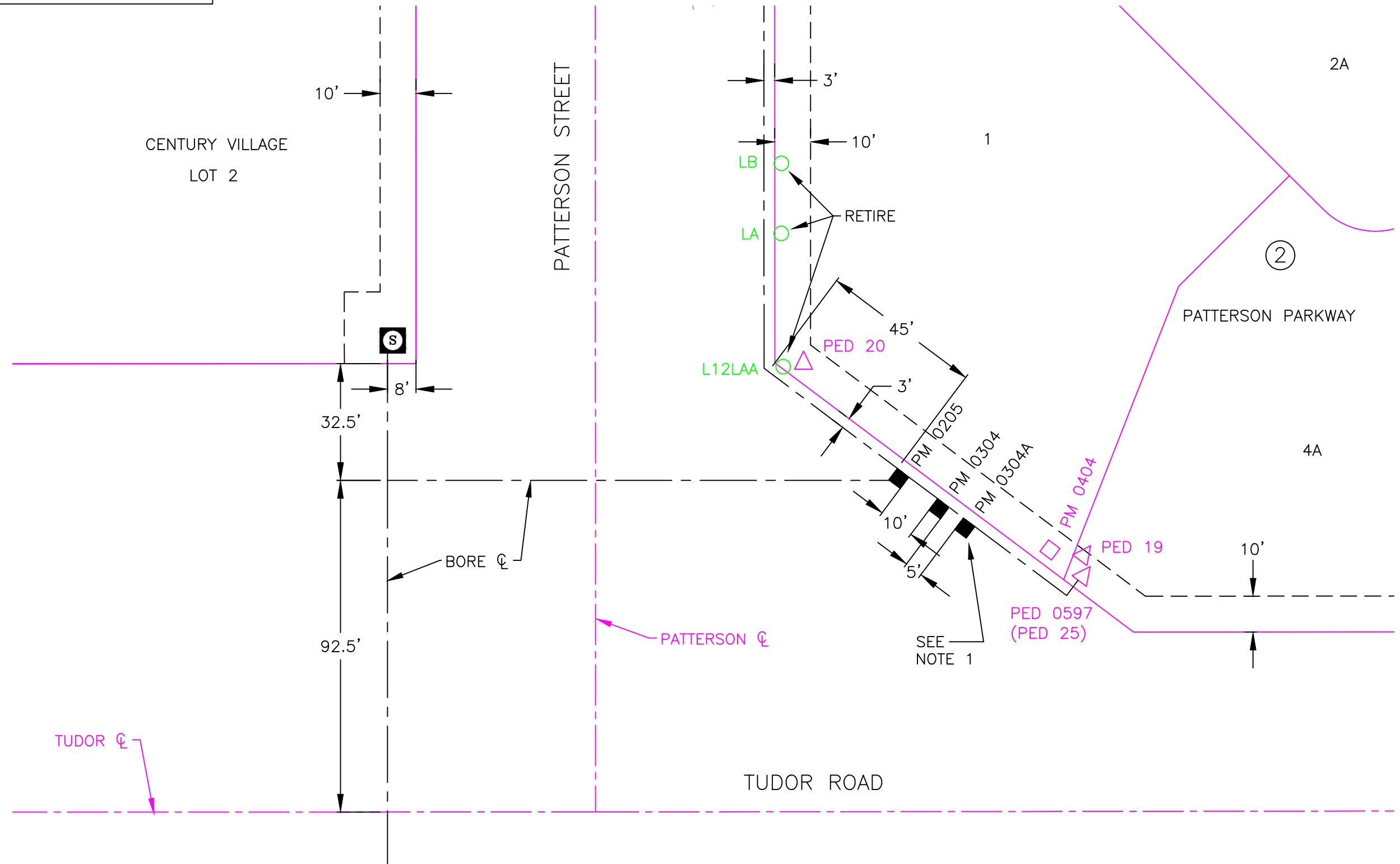
LOCATE CALL CENTER OF ALASKA (LCCA)
 ANCHORAGE AREA 278-3121
 STATEWIDE 800-478-3121
 AT&T ALASCOM INC. 264-8465
 ALASKA RAILROAD UTILITIES 265-2457
 ALYESKA CABLE TV (GIRDWOOD) 793-2992
 KULIS AIR BASE 249-1499
 MILITARY PETROLEUM FUEL LINES 552-2334
 STATE STORM DRAINS & STREET LIGHTS 333-2411

CONSTRUCTION	LEGEND
New	Existing
■ PADMOUNT TRANSFORMER	□
● PEDESTAL	△
▲ POWER POLE	○
★ STREET LIGHT	✱
■ WARNING POST	□
— 1 Ø UG PRI CONDUCTOR	—
— 3 Ø UG PRI CONDUCTOR	—
— UG SECONDARY CONDUCTOR	—
— UG STREET LIGHT CONDUCTOR	—
— 1 Ø OH CONDUCTOR	—
— 3 Ø OH CONDUCTOR	—
⊠ JUNCTION BOX	⊠
◆ SPLICE POINT	◇
— SPARE CONDUIT	—
— CONDUIT W/ CONDUCTOR	—
Ⓢ SWITCH CABINET	Ⓢ

R.O.W LEGEND	
—	R.O.W LINE
---	CENTERLINE OF TRENCH



NOTES:
 1. PM 0304 AND PM 0304A ARE DELTA CONNECTED AND NEED TO BE SEPARATED FROM PM 0205 BY 10'.
 2. ALL TRANSFORMERS WILL FACE INTO THE ROW.



Vicinity Map

N.T.S.

CONDUCTOR DATA	
Manuf. _____	Manuf. _____
Manuf. Date _____	Manuf. Date _____
Volt Rating _____	Volt Rating _____
Insul. Type _____	Insul. Type _____
Insul. Size _____	Insul. Size _____
Cond. Size/Type _____	Cond. Size/Type _____
Quantity In Feet _____	Quantity In Feet _____

CALL BEFORE YOU DIG!

LOCATE CALL CENTER OF ALASKA (LCCA)

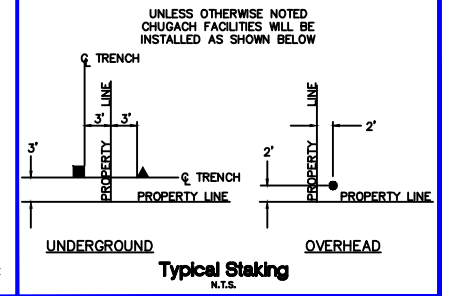
ANCHORAGE AREA.....	278-3121
STATEWIDE.....	800-478-3121
AT&T ALASCOM INC.....	264-8465
ALASKA RAILROAD UTILITIES.....	265-2457
ALYESKA CABLE TV (GIRDWOOD).....	783-2982
KULIS AIR BASE.....	249-1499
MILITARY PETROLEUM FUEL LINES.....	552-2334
	OR 552-5342
STATE STORM DRAINS & STREET LIGHTS.....	333-2411

CONSTRUCTION LEGEND

NEW	EXISTING

R.O.W. LEGEND

--- R.O.W. LINE
 - - - CENTERLINE OF TRENCH



RIGHT OF WAY DETAIL - TUDOR & PATTERSON



PROJECT: 30 OH TO UG PATTERSON ST AT INTERSECTION OF TUDOR ROAD				
DESIGNER/PROJECT ENGINEER: M. ELLIOTT			W.O. #: E1813854	
NO.	DESIGN/CONSTRUCTION/ASBUILT REVISION	DWN BY/DATE	REVIEWED (MGR/SUPV)/DATE	APPROVED (DIRECTOR)/DATE
0	ISSUED FOR CONSTRUCTION	ME 06/12/22	BQ 4/25/23	

ENG. STAMP

Chugach Electric Association, Inc.
 5601 Minnesota Drive - P.O. Box 196300
 Anchorage, Alaska 99519-6300

DRAWING NAME: PATTERSON STREET
 30 OH TO UG AT E. TUDOR INTERSECTION
 GRID: 1740 MAP: 1303-25C
 FEEDER: BFSS 512

W.O. NO.: E1813854
 C.W.P. REF. NO.: SHEET 1 OF 1

