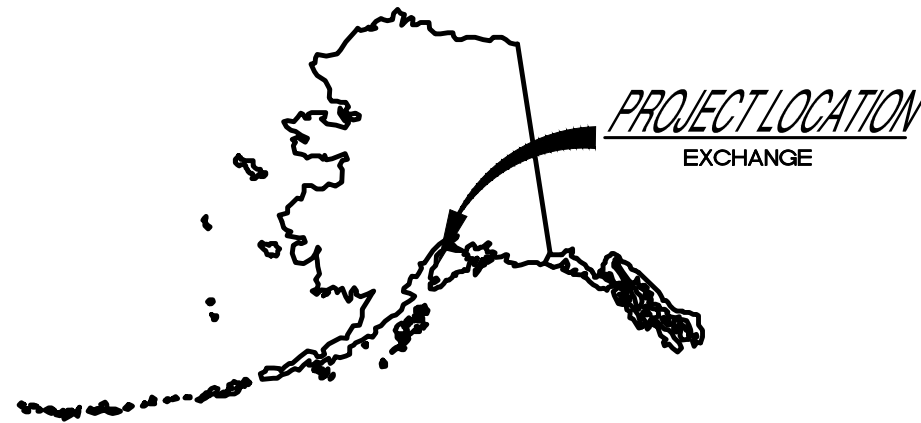
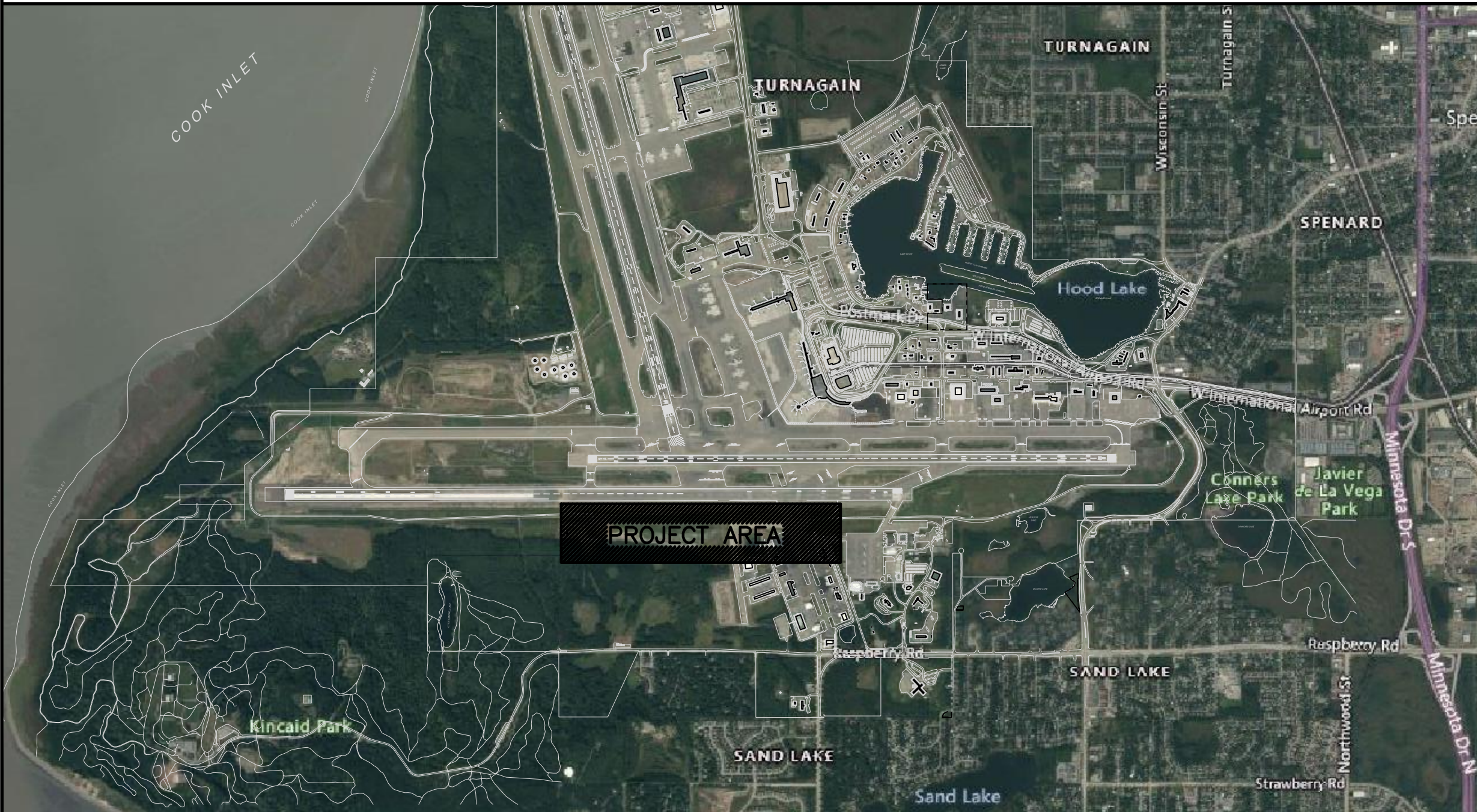


# W.O. 021-9325 WWC CFAPT00465 TAXIWAY Z WEST

Known utility lines are shown in approximate locations only. All exact locations to be determined by the contractor during construction.



Capital	Unit	Engineered	Project#
LINE	BFC100-24 (I) or (IE)	1230	021-9325
LINE	BFC200-24 (I) or (IE)	2050	021-9325
LINE	BFC400-24 (I) or (IE)	5810	021-9325
LINE	BM2(5/8)(8)	5	021-9325
LINE	BM60(4) (No-Restoration)	440	021-9325
LINE	BM60(4) T (VX1)	5330	021-9325
LINE	BM60(D)(4) 301 to 600	320	021-9325
LINE	BM90(90)(36)(4) P*	15	021-9325
LINE	LINECREW W/EQUIP*	12	021-9325
LINE	UHC(30X48X36) 33,750 LB	7	021-9325
REMOVAL	XX BD	3	021-9325
SPLICE	HBC(100)(24)	2	021-9325
SPLICE	HBC(200)(24)	4	021-9325
SPLICE	HBC(25)(24)	1	021-9325
SPLICE	HBC(400)(24)	5	021-9325
SPLICE	HC1	50	021-9325
SPLICE	HC3 (B)	200	021-9325
SPLICE	HC3>1	100	021-9325
SPLICE	HC3>1 (B)	800	021-9325
SPLICE	HC3>2 (B)	1200	021-9325
SPLICE	HC3>2 (U)	800	021-9325
SPLICE	HC3>6 (U)	800	021-9325
SPLICE	SPLICER W/EQUIP*	8	021-9325
SPLICE	SPLICER W/O EQUIP*	40	021-9325
SPLICE	SPLICER W/O EQUIP* O/T	2	021-9325



**GENERAL NOTES:**

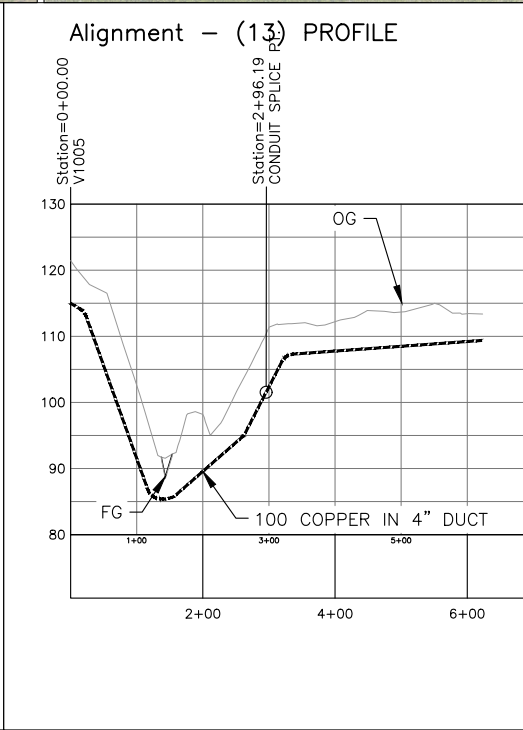
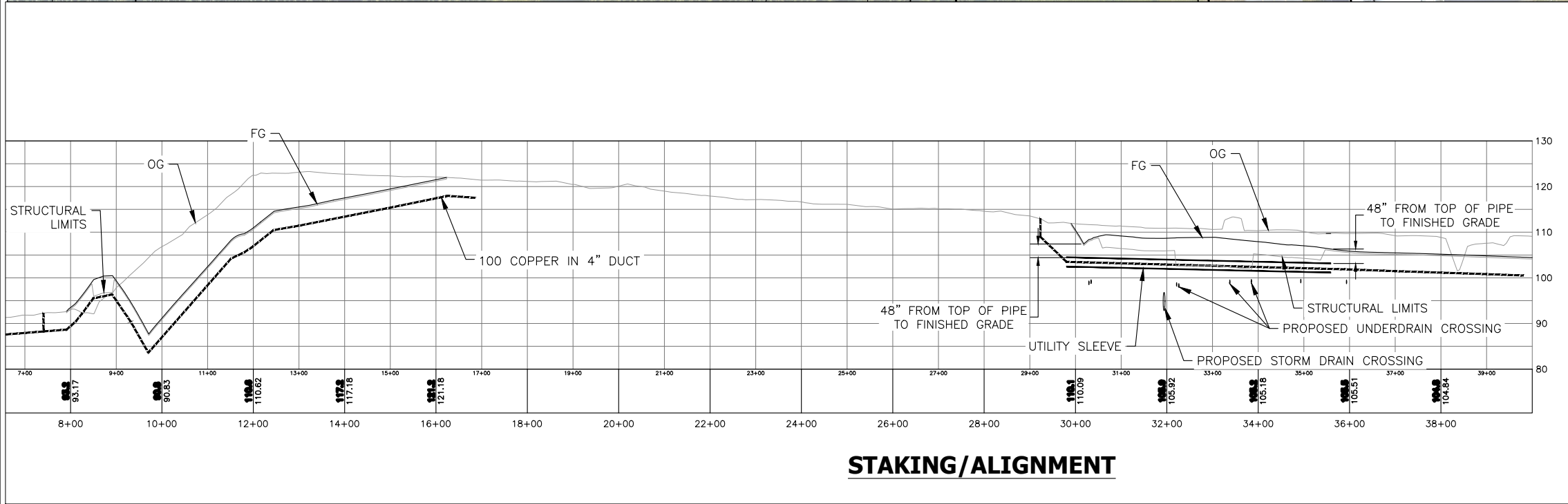
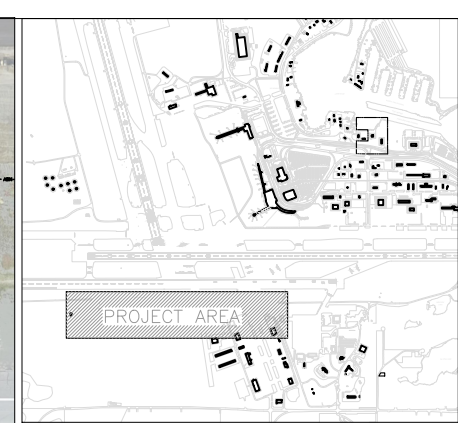
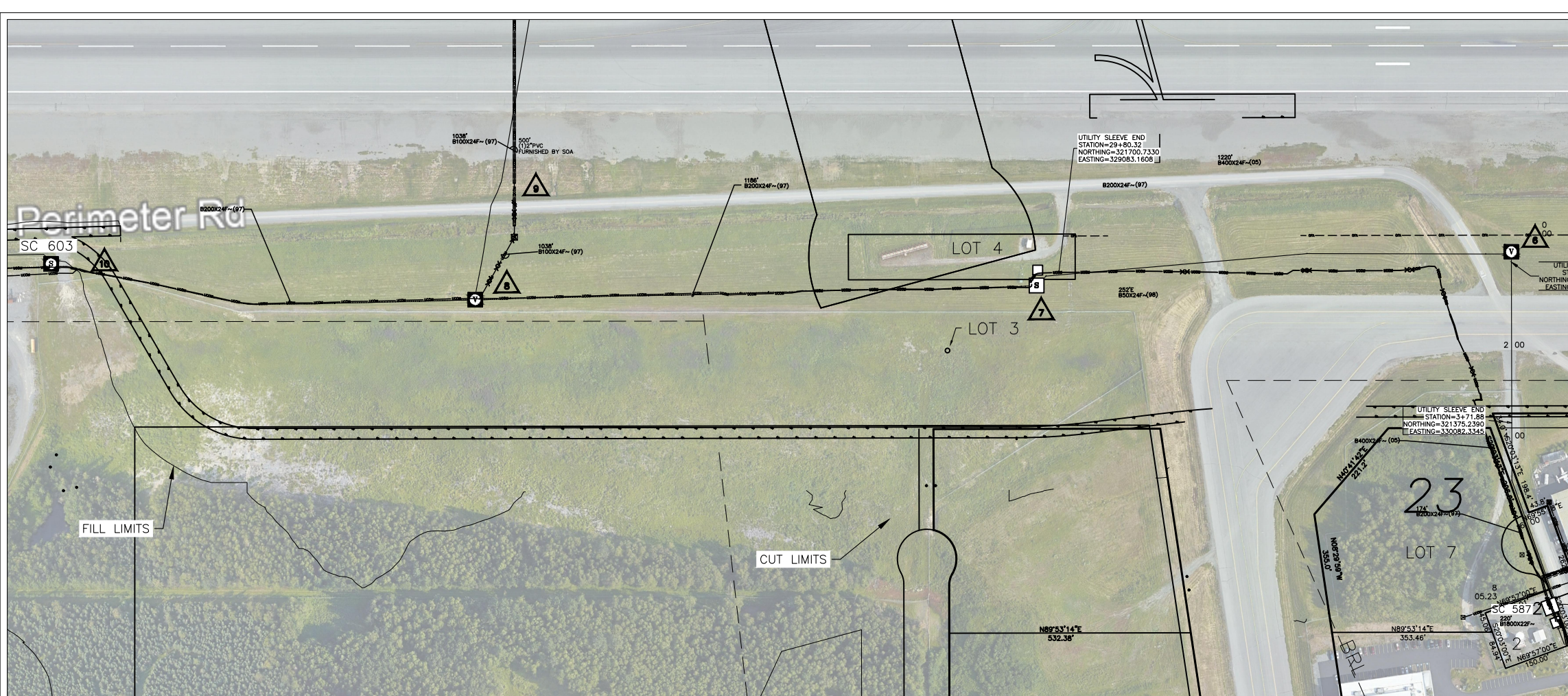
1. ALL EXISTING PLANT INFORMATION SHOWN IS FROM EXISTING RECORDS. NOTIFY ENGINEER OF ALL DISCREPANCIES FOUND, AND NOTE CHANGES ON PRINTS.
2. NOTIFY ENGINEER PRIOR TO MAKING ANY CHANGES TO WORK ORDER.

INDEX		
SHEET NO.	DESCRIPTION	LATEST ISSUE
1	TITLE SHEET, VACINITY MAPS, UNIT SUMMARY, INDEX	1
2	PLAN & PLANT SHEETS (CONSTRUCTION DRAWINGS)	1
3	DETAIL PLAN & PLANT SHEETS (CONSTRUCTION DRAWINGS)	
4	REPEATER / DOUBLER DETAIL PLAN & PLANT SHEETS	

**CALL**  
CALL LOCATE: 1-800-478-3121  
2 WORKING DAYS PRIOR TO CONSTRUCTION  
FOR UNDERGROUND SERVICES LOCATING



TOWNSHIP	RANGE	SECTION	DA#	EFRAP#	HELD ORDER: YES <input type="checkbox"/> NO <input checked="" type="checkbox"/>	PERMITS: YES <input type="checkbox"/> NO <input checked="" type="checkbox"/>	CUTS REQ: YES <input type="checkbox"/> NO <input checked="" type="checkbox"/>	PRESSURE: YES <input type="checkbox"/> NO <input checked="" type="checkbox"/>
ASSOCIATED WORK ORDERS	SOURCE MAPS	REVISION NUMBER-DATE-INITIALS	EXCHANGE WWC/1601	S#	TITLE: WWC CFAPT00465 TAXIWAY Z WEST			
		REV.	CAD# 021-9325 ACS TAXIWAY Z		BOROUGH/CNTY MOA			
		REV.	ENGR/EXT: W. MCKECHNIE		SCALE: NTS			
		REV.	DWN: WM	DATE:	APR'D: ISSUED:			
					SH. 1 OF 8 SHTS			



**NEW ACS**  
 ■ 30x48 HH  
 — UG CABLE/DUCT

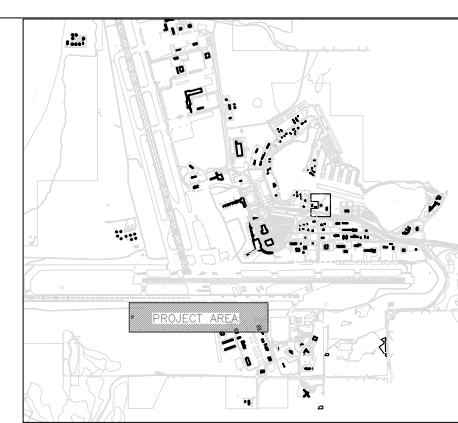
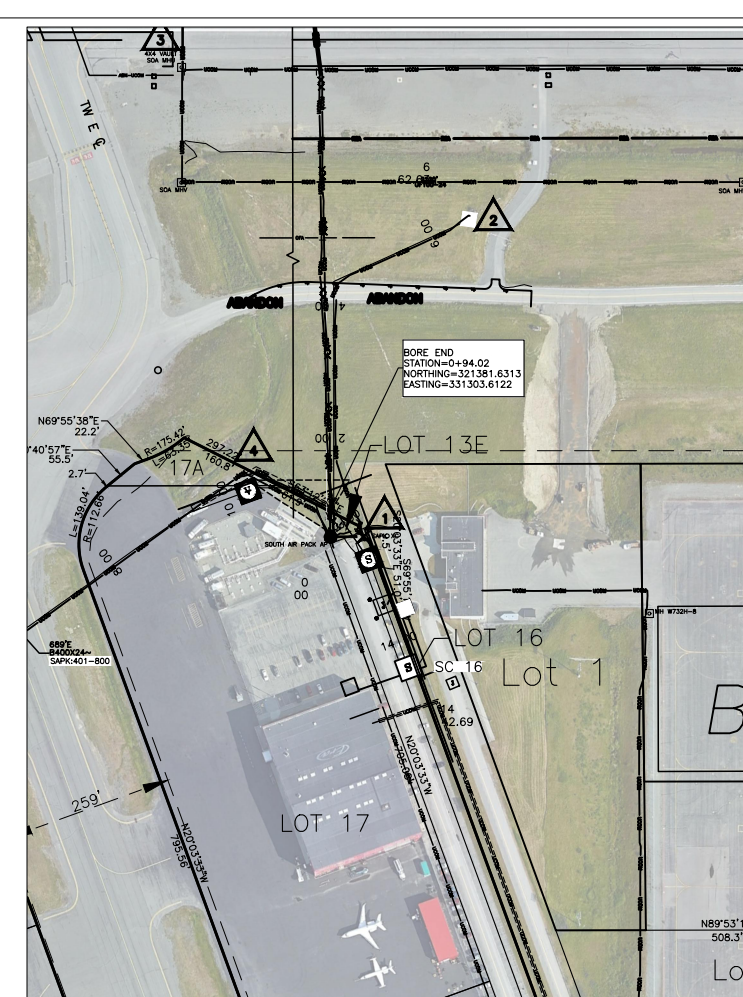
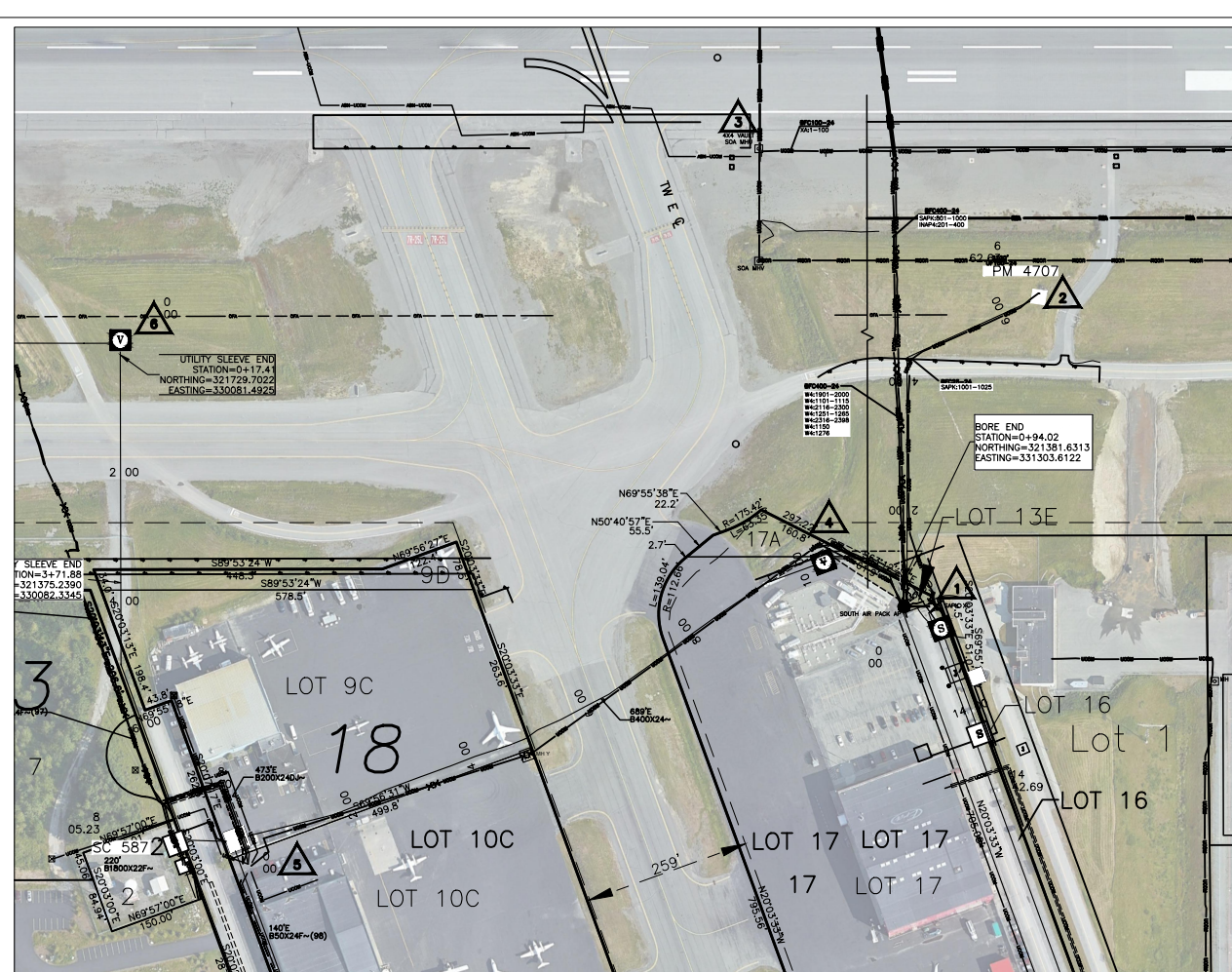
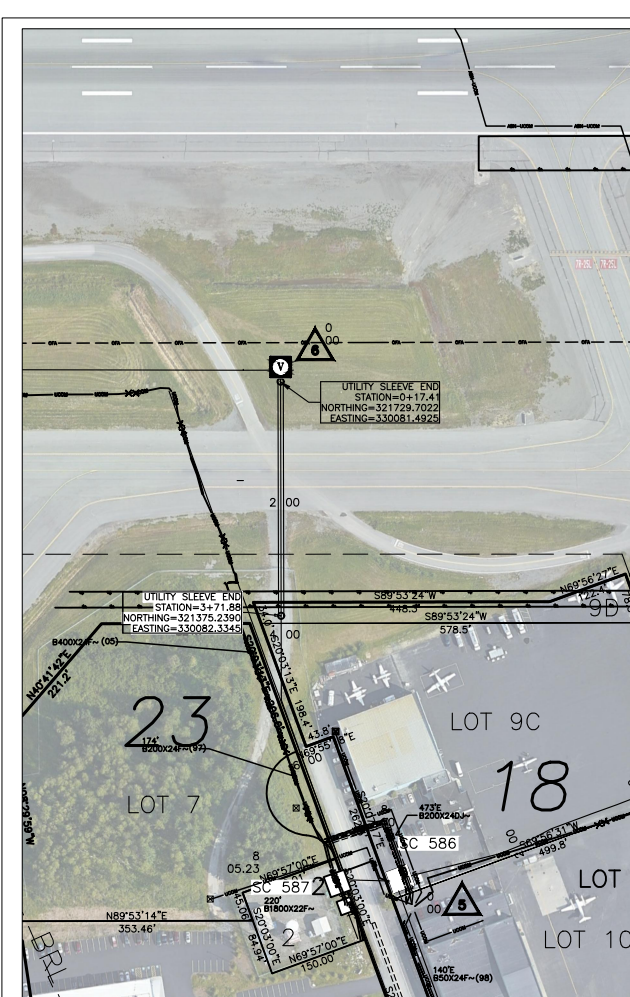
EXISTING ACS  
 ⊠ PED  
 — UCOM — CABLE/DUCT

1 ISSUED FOR PRELIM DESIGN

**CALL**  
**CALL LOCATE: 1-800-478-3121**  
**2 WORKING DAYS PRIOR TO CONSTRUCTION**  
**FOR UNDERGROUND SERVICES LOCATING**

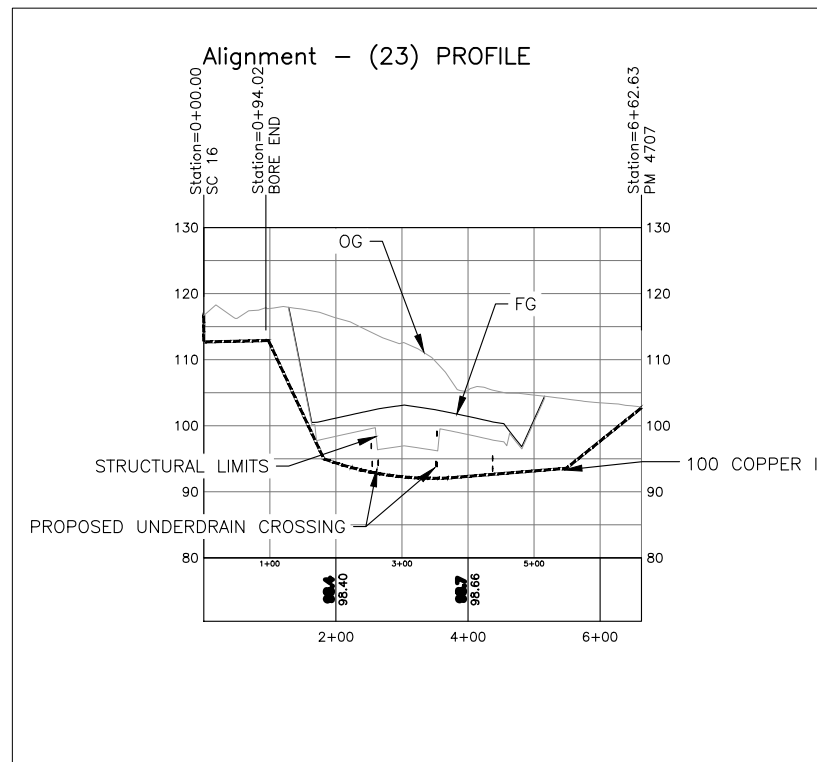
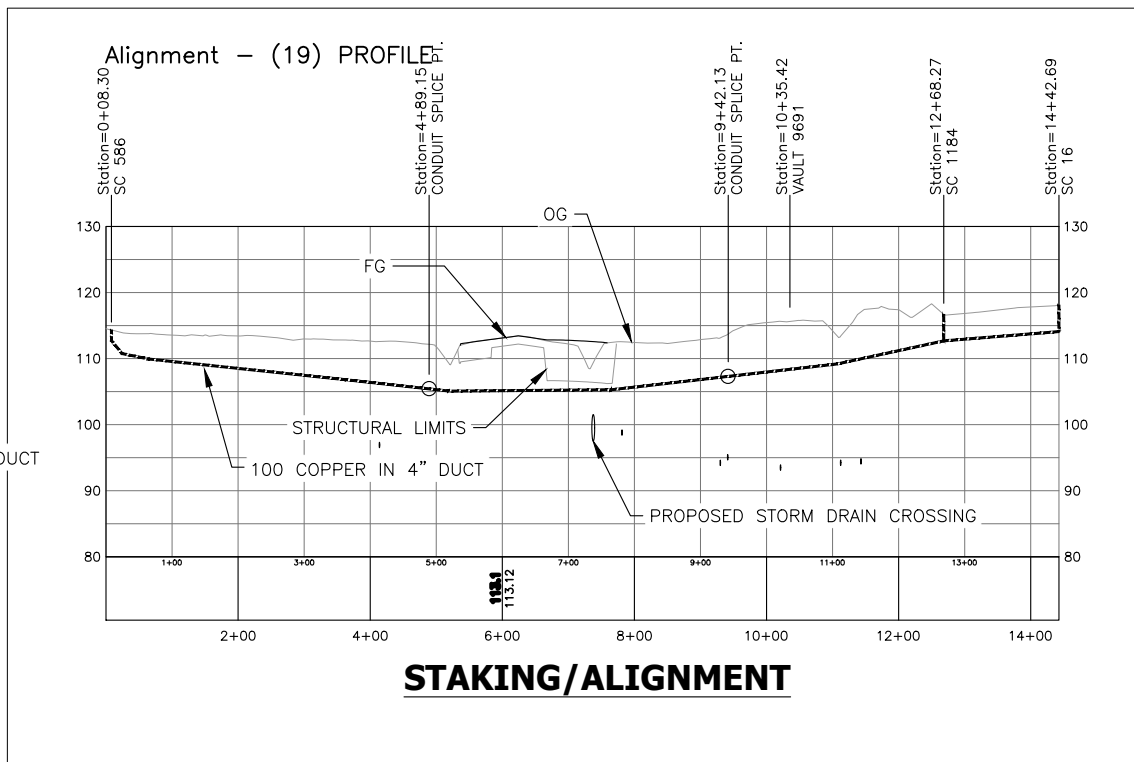
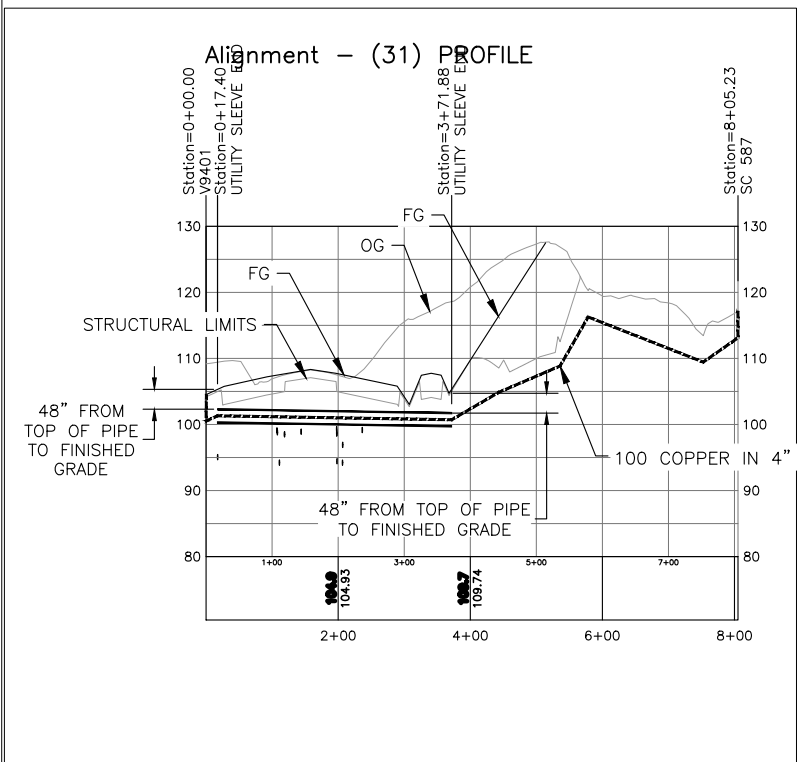


TOWNSHIP	RANGE	SECTION	DA#	EFRAP#	HELD ORDER: YES NO <input type="checkbox"/> <input checked="" type="checkbox"/>	PERMITS: YES NO <input type="checkbox"/> <input checked="" type="checkbox"/>	CUTS REQ: YES NO <input type="checkbox"/> <input checked="" type="checkbox"/>	PRESSURE: YES NO <input type="checkbox"/> <input checked="" type="checkbox"/>
ASSOCIATED WORK ORDERS	SOURCE MAPS	REVISION NUMBER-DATE-INITIALS	EXCHANGE WWC/1601	S#	TITLE: WWC CFAPT00465 TAXIWAY Z WEST			
REV.			CAD# 021-9325 ACS TAXIWAY Z		BOROUGH/CNTY MOA			
REV.			ENGR/EXT: W. MCKECHNIE		SCALE: NTS	APR'D:	ISSUED:	WO# (2021) 021-9325
REV.			DWN: WM	DATE:				SH. 2 OF 8 SHTS.



**NEW ACS**  
 ■ 30x48 HH  
 — UG CABLE/DUCT

EXISTING ACS  
 ☒ PED  
 — UCOM — CABLE/DUCT



TOWNSHIP	RANGE	SECTION	DA#	EFRAP#	HELD ORDER: YES NO <input type="checkbox"/> <input checked="" type="checkbox"/>	PERMITS: YES NO <input type="checkbox"/> <input checked="" type="checkbox"/>	CUTS REQ: YES NO <input type="checkbox"/> <input checked="" type="checkbox"/>	PRESSURE: YES NO <input type="checkbox"/> <input checked="" type="checkbox"/>
ASSOCIATED WORK ORDERS	SOURCE MAPS	REVISION NUMBER-DATE-INITIALS	EXCHANGE WWC/1601	S#	TITLE: WWC CFAPT00465 TAXIWAY Z WEST			WO# (2021) 021-9325
		REV.	CAD# 021-9325 ACS TAXIWAY Z		BOROUGH/CNTY MOA			
		REV.	ENGR/EXT: W. MCKECHNIE		SCALE: NTS			
		REV.	DWN: WM DATE:		APR'D:			
					ISSUED:			SH. 3 OF 8 SHTS.

ABANDONED IN PLACE

ABANDONED IN PLACE

CABLE SIZE  
START SEQ #  
END SEQ #

SOA MH W767 STA:9+00 TAXIWAY E					
STOCK #	ACTL	ESTM	UNIT	Capital	WBS#
R0960		900	BFC400-24 (I) or (IE)	LINE	021-9325-12
R0960		900	BFC400-24 (I) or (IE)	LINE	021-9325-12
S2380		1	BM90(90)(36)(4) P*	LINE	021-9325-12
S2301		200	BM60(4) (No-Restoration)	LINE	021-9325-12
S3265		320	BM60(D)(4) 301 to 600	LINE	021-9325-12
S2301		380	BM60(4) T (VX1)	LINE	021-9325-12
		800	HC3>6 (U)	SPLICE	021-9325-24
T4120		2	HBC(400)(24)	SPLICE	021-9325-26

STA:10+52					
STOCK #	ACTL	ESTM	UNIT	Capital	WBS#
		160	BM60(4)T	LINE	021-9325-12



146' TRENCH  
PL.146' NEW  
BM60(4)

PL.320' NEW  
BM60(D)(4)

PL.900' NEW  
BFC400-24  
SAPK:801-1000  
INAP4:201-400

PL.900' NEW  
BFC400-24  
W4:1901-2000  
W4:1101-1115  
W4:2116-2300  
W4:1251-1265  
W4:2316-2398  
W4:1150  
W4:1276

320' BORE  
380' JOINT W/CEA

ABANDON  
BFC400-24  
SAPK:801-1000  
INAP4:201-400

PL.650' NEW  
BM60(4)

ABANDON  
BFC400-24  
W4:1901-2000  
W4:1101-1115  
W4:2116-2300  
W4:1251-1265  
W4:2316-2398  
W4:1150  
W4:1276

PL.650' NEW  
BFC25-24  
SAPK:1001-1025

ABANDON  
BFC25-24  
SAPK:1001-1025

PL.900' NEW  
BM60(4)

PL.150' NEW  
BM60(4)T

BORE END  
STATION=0+94.02  
NORTHING=321381.6313  
EASTING=331303.6122

CABLE SIZE  
START SEQ #  
END SEQ #

STA:6+62					
STOCK #	ACTL	ESTM	UNIT	Capital	WBS#
S3800		1	UHC(30X48X36) 33,750 LB	LINE	021-9325-10
		1	BM2(5/8)(8)	LINE	021-9325-12
S3108		1	UD(2-18MM) V	LINE	021-9325-12
S3114		710	UD(3-12MM) V	LINE	021-9325-12
R0960		710	BFC400-24 (I) or (IE)	LINE	021-9325-12
		25	HC1	SPLICE	021-9325-24
T4100		1	HBC(25)(24)	SPLICE	021-9325-26
		1	XX BD	REMOVAL	021-9325-49

CABLE SIZE  
START SEQ #  
END SEQ #

SAPK XC STA:12+00					
STOCK #	ACTL	ESTM	UNIT	Capital	WBS#
S2301		50	BM60(4) (No-Restoration)	LINE	021-9325-12
S2380		10	BM90(90)(36)(4) P*	LINE	021-9325-12
		20	SPLICER W/O EQUIP*	SPLICE	021-9325-24
		100	HC3>1	SPLICE	021-9325-24
		400	HC3>2 (U)	SPLICE	021-9325-24
		400	HC3>2 (U)	SPLICE	021-9325-24
		25	HC1	SPLICE	021-9325-24



SEE SHEET 5

**CALL**  
CALL LOCATE: 1-800-478-3121  
2 WORKING DAYS PRIOR TO CONSTRUCTION  
FOR UNDERGROUND SERVICES LOCATING



TOWNSHIP	RANGE	SECTION	DA#	EFRAP#	HELD ORDER: YES <input type="checkbox"/> NO <input checked="" type="checkbox"/>	PERMITS: YES <input type="checkbox"/> NO <input checked="" type="checkbox"/>	CUTS REQ: YES <input type="checkbox"/> NO <input checked="" type="checkbox"/>	PRESSURE: YES <input type="checkbox"/> NO <input checked="" type="checkbox"/>
ASSOCIATED WORK ORDERS	SOURCE MAPS	REVISION NUMBER-DATE-INITIALS	EXCHANGE WWC/1601	S#	TITLE: WWC CFAPT00465 TAXIWAY Z WEST			
		REV.	CAD# 021-9325 ACS TAXIWAY Z		BOROUGH/CNTY MOA			
		REV.	ENGR/EXT: W. MCKECHNIE		SCALE: NTS APR'D: ISSUED:			
		REV.	DWN: WM	DATE:	SH. 4 OF 8 SHTS.			

WO# ( 2021 )  
021-9325

**ABANDON**  
 B400X24F~(05)  
 SAPK:401-407  
 B:8-50  
 A:1-22  
 SAPK:423-438  
 A:39-50  
 SAPK:451-460  
 A:61-90  
 SAPK:491-500  
 SAPK:601-610  
 A:111-125  
 SAPK:626-640  
 A:141-156  
 SAPK:657-665  
 A:166-175  
 SAPK:676-700  
 A:251-400

UTILITY SLEEVE END  
 STATION=3+71.88  
 NORTHING=321375.2390  
 EASTING=330082.3345

**ABANDON**  
 B200X24F~(97)  
 A:1-22  
 SAPK:423-438  
 A:39-50  
 SAPK:451-460  
 A:61-90  
 SAPK:491-500  
 SAPK:601-610  
 A:111-125  
 SAPK:626-640  
 A:141-156  
 SAPK:657-665  
 A:166-175  
 SAPK:676-700

**PL.900'**  
**NEW**  
 BFC200-24  
 A:1-22  
 SAPK:423-438  
 A:39-50  
 SAPK:451-460  
 A:61-90  
 SAPK:491-500  
 SAPK:601-610  
 A:111-125  
 SAPK:626-640  
 A:141-156  
 SAPK:657-665  
 A:166-175  
 SAPK:676-700

**PL.900'**  
**NEW**  
 BFC400-24  
 SAPK:401-407  
 B:8-50 A:1-22  
 SAPK:423-438  
 A:39-50  
 SAPK:451-460  
 A:61-90  
 SAPK:491-500  
 SAPK:601-610  
 A:111-125  
 SAPK:626-640  
 A:141-156  
 SAPK:657-665  
 A:166-175  
 SAPK:676-700  
 A:251-400

**PL.1250'**  
**NEW**  
 BM60(4)

**PL.1250'**  
**NEW**  
 BFC400-24  
 SAPK:401-800

**ABANDON**  
 589'  
 (B400X24~  
 SAPK:401-800)

JOINT WITH CEA

ABANDON  
 MH Y

CABLE SIZE  
 START SEQ #  
 END SEQ #

STOCK #	ACTL	ESTM	UNIT	Capital	WBS#
S3800		1	UHC(30X48X36) 33,750 LB	LINE	021-9325-.10
S2380		2	BM90(90)(36)(4) P*	LINE	021-9325-.12
S2301		15	BM60(4) (No-Restoration)	LINE	021-9325-.12
R0960		1250	BFC400-24 (I) or (IE)	LINE	021-9325-.12
S2301		1000	BM60(4) T (VX1)	LINE	021-9325-.12
		2	SPLICER W/O EQUIP* O/T	SPLICE	021-9325-.26
		8	SPLICER W/EQUIP*	SPLICE	021-9325-.26
		200	HC3>1 (B)	SPLICE	021-9325-.26
T4110		1	HBC(200)(24)	SPLICE	021-9325-.26
		400	HC3>2 (B)	SPLICE	021-9325-.26
T4120		1	HBC(400)(24)	SPLICE	021-9325-.26



**CALL**  
 CALL LOCATE: 1-800-478-3121  
 2 WORKING DAYS PRIOR TO CONSTRUCTION  
 FOR UNDERGROUND SERVICES LOCATING



TOWNSHIP	RANGE	SECTION	DA#	EFRAP#	HELD ORDER: YES NO <input type="checkbox"/> <input checked="" type="checkbox"/>	PERMITS: YES NO <input type="checkbox"/> <input checked="" type="checkbox"/>	CUTS REQ: YES NO <input type="checkbox"/> <input checked="" type="checkbox"/>	PRESSURE: YES NO <input type="checkbox"/> <input checked="" type="checkbox"/>
ASSOCIATED WORK ORDERS	SOURCE MAPS	REVISION NUMBER-DATE-INITIALS	EXCHANGE WWC/1601	S#	TITLE: WWC CFAPT00465 TAXIWAY Z WEST			
		REV.	CAD# 021-9325 ACS TAXIWAY Z		BOROUGH/CNTY MOA			
		REV.	ENGR/EXT: W. MCKECHNIE		SCALE: NTS APR'D: ISSUED:			
		REV.	DWN: WM DATE:		SH. 5 OF 8 SHTS.			

CABLE SIZE  
START SEQ #  
END SEQ #

ABANDONED IN PLACE

ABANDONED IN PLACE

STA:29+38					
STOCK #	ACTL	ESTM	UNIT	Capital	WBS#
S2380		2	BM90(90)(36)(4) P*	LINE	
S3800		1	UHC(30X48X36) 33,750 LB	LINE	021-9325-10
S2301		15	BM60(4) (No-Restoration)	LINE	021-9325-12
		1	BM2(5/8)(8)	LINE	021-9325-12
R0960		1150	BFC400-24 (I) or (IE)	LINE	021-9325-12
R0680		1150	BFC200-24 (I) or (IE)	LINE	021-9325-12
S2301		1100	BM60(4) T (VX1)	LINE	021-9325-12
		8	SPLICER W/O EQUIP*	SPLICE	021-9325-26
		400	HC3>2 (B)	SPLICE	021-9325-26
		200	HC3>1 (B)	SPLICE	021-9325-26
T4120		1	HBC(400)(24)	SPLICE	021-9325-26

7

UTILITY SLEEVE END  
STATION=29+80.32  
NORTHING=321700.7330  
EASTING=329083.1608

ABANDON  
B200X24F~(97)  
A:1-22  
SAPK:423-438  
A:39-50  
SAPK:451-460  
A:61-90  
SAPK:491-500  
SAPK:601-610  
A:111-125  
SAPK:626-640  
A:141-156  
SAPK:657-665  
A:166-175  
SAPK:676-700

ABANDON  
B400X24F~(05)  
SAPK:401-407  
B:8-50 A:1-22  
SAPK:423-438  
A:39-50  
SAPK:451-460  
A:61-90  
SAPK:491-500  
SAPK:601-610  
A:111-125  
SAPK:626-640  
A:141-156  
SAPK:657-665  
A:166-175  
SAPK:676-700  
A:251-400

PL.1100'  
**NEW**  
BFC200-24  
A:1-22  
SAPK:423-438  
A:39-50  
SAPK:451-460  
A:61-90  
SAPK:491-500  
SAPK:601-610  
A:111-125  
SAPK:626-640  
A:141-156  
SAPK:657-665  
A:166-175  
SAPK:676-700

PL.1100'  
**NEW**  
BFC400-24  
SAPK:401-407  
B:8-50 A:1-22  
SAPK:423-438  
A:39-50  
SAPK:451-460  
A:61-90  
SAPK:491-500  
SAPK:601-610  
A:111-125  
SAPK:626-640  
A:141-156  
SAPK:657-665  
A:166-175  
SAPK:676-700  
A:251-400

CABLE SIZE  
START SEQ #  
END SEQ #

STA:39+84					
STOCK #	ACTL	ESTM	UNIT	Capital	WBS#
S3800		1	UHC(30X48X36) 33,750 LB	LINE	021-9325-10
		1	BM2(5/8)(8)	LINE	021-9325-12
S2380		2	BM90(90)(36)(4) P*	LINE	021-9325-12
R0960		900	BFC400-24 (I) or (IE)	LINE	021-9325-12
R0680		900	BFC200-24 (I) or (IE)	LINE	021-9325-12
S2301		960	BM60(4) T (VX1)	LINE	021-9325-12

N



SEE SHEET 7

UTILITY SLEEVE END  
STATION=0+17.41  
NORTHING=321729.7022  
EASTING=330081.4925

354' SLEEVE PROVIDED

PL.1100'  
**NEW**  
BM60(4)

SEE SHEET 5

**CALL**  
CALL LOCATE: 1-800-478-3121  
2 WORKING DAYS PRIOR TO CONSTRUCTION  
FOR UNDERGROUND SERVICES LOCATING



TOWNSHIP	RANGE	SECTION	DA#	EFRAP#	HELD ORDER: YES <input type="checkbox"/> NO <input checked="" type="checkbox"/>	PERMITS: YES <input type="checkbox"/> NO <input checked="" type="checkbox"/>	CUTS REQ: YES <input type="checkbox"/> NO <input checked="" type="checkbox"/>	PRESSURE: YES <input type="checkbox"/> NO <input checked="" type="checkbox"/>
ASSOCIATED WORK ORDERS	SOURCE MAPS	REVISION NUMBER-DATE-INITIALS	EXCHANGE WWC/1601	S#	TITLE: WWC CFAPT00465 TAXIWAY Z WEST			
		REV.	CAD# 021-9325 ACS TAXIWAY Z		BOROUGH/CNTY MOA			
		REV.	ENGR/EXT: W. MCKECHNIE		SCALE: NTS APR'D: ISSUED:			
		REV.	DWN: WM	DATE:	SH. 6 OF 8 SHTS.			

WO# ( 2021 )  
021-9325

B100X24F~(97)  
 B:1-50  
 A:151-156  
 SAPK:657-665  
 A:166-175  
 SAPK:676-700

500'  
 (1)2" PVC  
 FURNISHED BY SOA

CABLE SIZE \_\_\_\_\_  
 START SEQ # \_\_\_\_\_  
 END SEQ # \_\_\_\_\_

STA:2+33					
STOCK #	ACTL	ESTM	UNIT	Capital	WBS#
S3800		1	UHC(30X48X36) 33,750 LB	LINE	021-9325-10
		1	BM2(5/8)(8)	LINE	021-9325-12
S2380		1	BM90(90)(36)(4) P*	LINE	021-9325-12
S2301		280	BM60(4) T (VX1)	LINE	021-9325-12
R0440		280	BFC100-24 (I) or (IE)	LINE	021-9325-12
		4	LINECREW W/EQUIP*	LINE	021-9325-12
		100	HC3 (B)	SPLICE	021-9325-26
T4100		1	HBC(100)(24)	SPLICE	021-9325-26

**9**

1186'  
 B200X24F~(97)  
 A:1-22  
 SAPK:423-438  
 A:39-50  
 SAPK:451-460  
 A:61-90  
 SAPK:491-500  
 SAPK:601-610  
 A:111-125  
 SAPK:626-640  
 SAPK:657-665  
 A:166-175  
 SAPK:676-700

ABANDON  
 B100X24~(97)  
 B:1-50  
 A:151-156  
 SAPK:657-665  
 A:166-175  
 SAPK:676-700

CABLE SIZE \_\_\_\_\_  
 START SEQ # \_\_\_\_\_  
 END SEQ # \_\_\_\_\_

STA:17+32					
STOCK #	ACTL	ESTM	UNIT	Capital	WBS#
S3800		1	UHC(30X48X36) 33,750 LB	LINE	021-9325-10
S2380		2	BM90(90)(36)(4) P*	LINE	021-9325-12
		1	BM2(5/8)(8)	LINE	021-9325-12
		4	LINECREW W/EQUIP*	LINE	021-9325-12
		8	SPLICER W/O EQUIP*	SPLICE	021-9325-26
		100	HC3 (B)	SPLICE	021-9325-26
T4100		1	HBC(100)(24)	SPLICE	021-9325-26
		200	HC3>1 (B)	SPLICE	021-9325-26
T4110		1	HBC(200)(24)	SPLICE	021-9325-26

**8**

PL.950'  
**NEW**  
 BFC200-24  
 A:1-22  
 SAPK:423-438  
 A:39-50  
 SAPK:451-460  
 A:61-90  
 SAPK:491-500  
 SAPK:601-610  
 A:111-125  
 SAPK:626-640  
 A:141-200

PL.280'  
**NEW**

BM60(4)

PL.280'  
**NEW**

BFC100-24  
 B:1-50  
 A:151-156  
 SAPK:657-665  
 A:166-175  
 SAPK:676-700

JOINT W/CEA

NO CONFLICT THIS SECTION



SEE SHEET 8

SEE SHEET 6

**CALL**  
 CALL LOCATE: 1-800-478-3121  
 2 WORKING DAYS PRIOR TO CONSTRUCTION  
 FOR UNDERGROUND SERVICES LOCATING



TOWNSHIP	RANGE	SECTION	DA#	EFRAP#	HELD ORDER: YES <input type="checkbox"/> NO <input checked="" type="checkbox"/>	PERMITS: YES <input type="checkbox"/> NO <input checked="" type="checkbox"/>	CUTS REQ: YES <input type="checkbox"/> NO <input checked="" type="checkbox"/>	PRESSURE: YES <input type="checkbox"/> NO <input checked="" type="checkbox"/>
ASSOCIATED WORK ORDERS	SOURCE MAPS	REVISION NUMBER-DATE-INITIALS	EXCHANGE WWC/1601	S#	TITLE: WWC CFAPT00465 TAXIWAY Z WEST			
		REV.	CAD# 021-9325 ACS TAXIWAY Z		BOROUGH/CNTY MOA			
		REV.	ENGR/EXT: W. MCKECHNIE		SCALE: NTS APR'D: ISSUED:			
		REV.	DWN: WM	DATE:	SH. 7 OF 8 SHTS.			

WO# ( 2021 )  
 021-9325

B200X24F~(97)  
 A:1-22  
 SAPK:423-438  
 A:39-50  
 SAPK:451-460  
 A:61-90  
 SAPK:491-500  
 SAPK:601-610  
 A:111-125  
 SAPK:626-640  
 A:141-200

**ABANDON**  
 B200X24F~(97)  
 A:1-22  
 SAPK:423-438  
 A:39-50  
 SAPK:451-460  
 A:61-90  
 SAPK:491-500  
 SAPK:601-610  
 A:111-125  
 SAPK:626-640  
 A:141-200

**W Perimeter**

SC 603



592'  
 BFC25X24(12)  
 3XD  
 SAPK:604-610  
 15XD

CABLE SIZE \_\_\_\_\_  
 START SEQ # \_\_\_\_\_  
 END SEQ # \_\_\_\_\_

STA:8+00					
<b>10</b>					
STOCK #	ACTL	ESTM	UNIT	Capital	WBS#
S2380		1	BM90(90)(36)(4) P*	LINE	
S3800		1	UHC(30X48X36) 33,750 LB	LINE	021-9325-10
		4	LINECREW W/EQUIP*	LINE	021-9325-12
R0440		950	BFC100-24 (I) or (IE)	LINE	021-9325-12
S2301		900	BM60(4) T (VX1)	LINE	021-9325-12
		4	SPLICER W/O EQUIP*	SPLICE	021-9325-26
		200	HC3>1 (B)	SPLICE	021-9325-26
T4110		1	HBC(200)(24)	SPLICE	021-9325-26
		1	XX BD	REMOVAL	021-9325-49

PL.950'  
**NEW**

BFC200-24  
 A:1-22  
 SAPK:423-438  
 A:39-50  
 SAPK:451-460  
 A:61-90  
 SAPK:491-500  
 SAPK:601-610  
 A:111-125  
 SAPK:626-640  
 A:141-200

PL.950'  
**NEW**  
 BM60(4)

JOINT W/CEA

SEE SHEET 7

**CALL**  
 CALL LOCATE: 1-800-478-3121  
 2 WORKING DAYS PRIOR TO CONSTRUCTION  
 FOR UNDERGROUND SERVICES LOCATING



TOWNSHIP	RANGE	SECTION	DA#	EFRAP#	HELD ORDER: YES <input type="checkbox"/> NO <input checked="" type="checkbox"/>	PERMITS: YES <input type="checkbox"/> NO <input checked="" type="checkbox"/>	CUTS REQ: YES <input type="checkbox"/> NO <input checked="" type="checkbox"/>	PRESSURE: YES <input type="checkbox"/> NO <input checked="" type="checkbox"/>
ASSOCIATED WORK ORDERS	SOURCE MAPS	REVISION NUMBER-DATE-INITIALS	EXCHANGE WWC/1601	S#	TITLE: WWC CFAPT00465 TAXIWAY Z WEST			
		REV.	CAD# 021-9325 ACS TAXIWAY Z		BOROUGH/CNTY MOA			
		REV.	ENGR/EXT: W. MCKECHNIE		SCALE: NTS APR'D: ISSUED:			
		REV.	DWN: WM	DATE:	SH. 8 OF 8 SHTS.			